

COPPER HOUSE GREEN

DARTFORD

**AUBURN APARTMENTS
FLOOR PLANS**

APARTMENTS 391-444

COPPERHOUSE GREEN

DARTFORD

DEVELOPMENT PLAN



- Current Phase
- Future Phase
- Previous Phase
- Housing Association

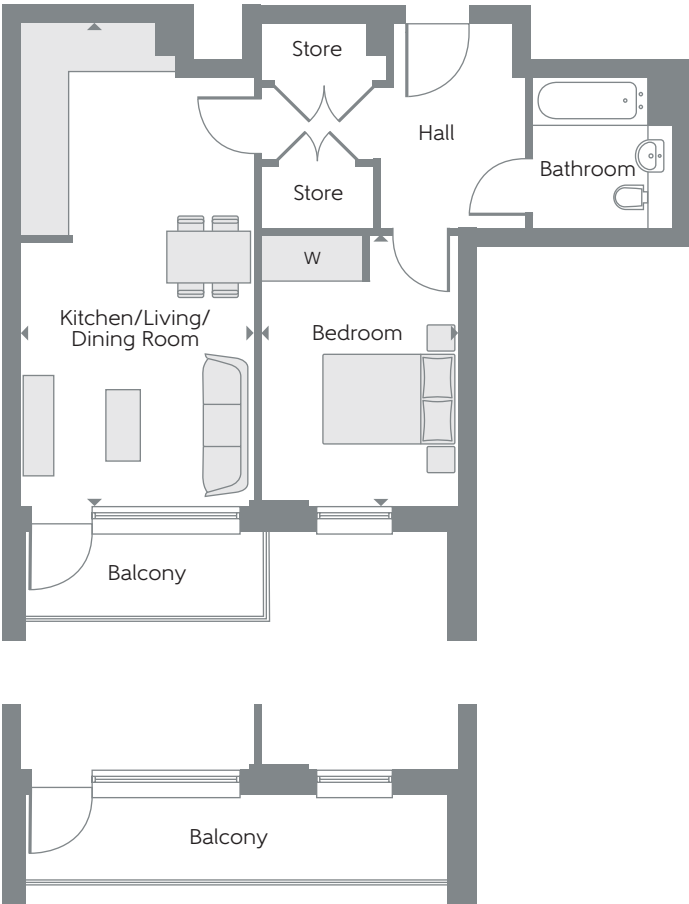
The site plan is drawn to show the relative position of individual properties. Not to scale. These are drawings and will not show land contours and gradients, boundary treatments, landscaping or local authority street lighting. Footpaths subject to change. For details of individual properties and availability please refer to our Sales Advisor. Block names are for marketing purposes only.



AUBURN APARTMENTS

TYPE F-01

One Bedroom Apartments
Plots 391, 399, 407, 415, 423 & 431



Full width balcony to plots 391 & 407 only

Kitchen/Living/ Dining Room	7.05m x 3.43m	23'2" x 11'3"
Bedroom	4.02m x 2.90m	13'2" x 9'6"
Total area	53.0 sq.m.	570 sq. ft.

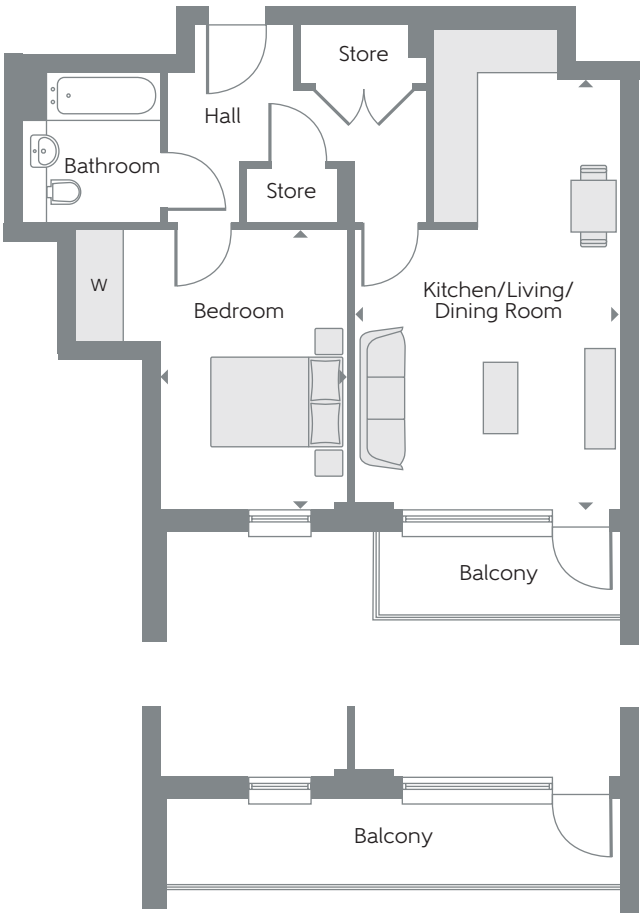
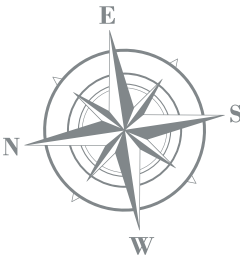
W Fitted Wardrobe c/s Cycle Store b/s Bin Store L Lift ► Indicates where dimensions are taken from

Some items shown in this key may be subject to change, and positions could vary from those indicated on this floorplan. Please refer to Sales Advisor for details of your selected plot. External finishes and landscaping may vary.. Please refer to Sales Advisor for further details. All dimensions are approximate and should not be used for carpet sizes, appliance spaces or furniture. Furniture not to scale and all positions are indicative. **Kitchen layouts are subject to change.** We operate a policy of continuous improvement and individual features such as kitchen and bathroom layouts, doors, windows, garages and elevational treatments may vary from time to time. Consequently these particulars should be treated as general guidance only and do not constitute a contract, part of a contract or a warranty. Types F-01 and F-05.

AUBURN APARTMENTS

TYPE F-05

One Bedroom Apartments
Plots 398, 406, 414, 422, 430, 438 & 444



Full width balcony to plots 398 & 414 only

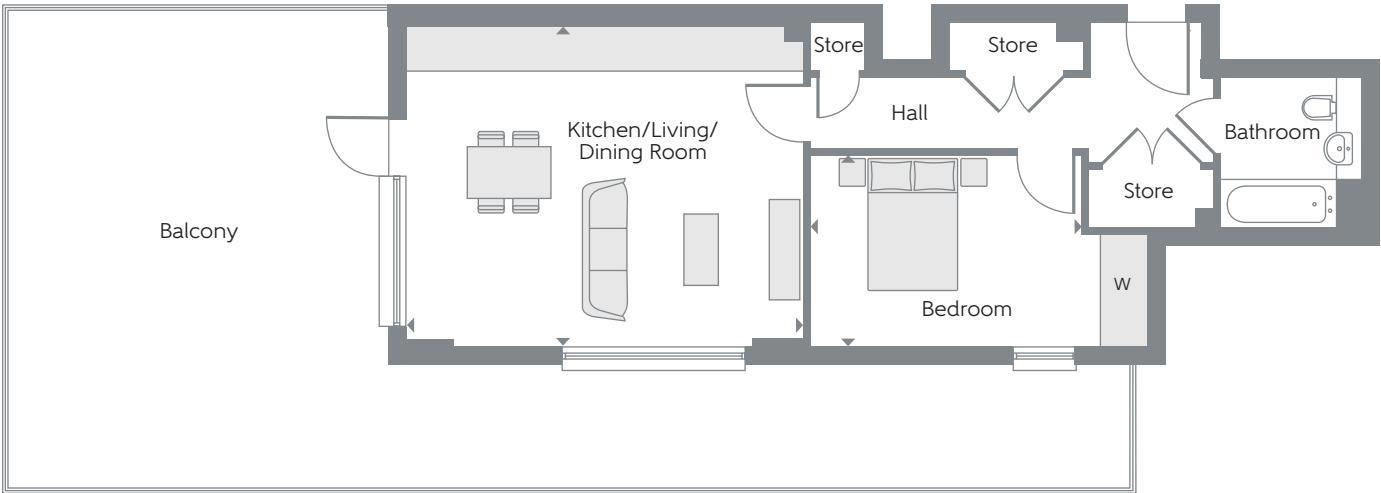
Kitchen/Living/ Dining Room	6.31m x 3.91m	20'8" x 12'10"
Bedroom	4.12m x 2.75m	13'6" x 9'0"
Total area	54.3 sq.m.	585 sq.ft.

▲ View towards Central Park



AUBURN
APARTMENTS

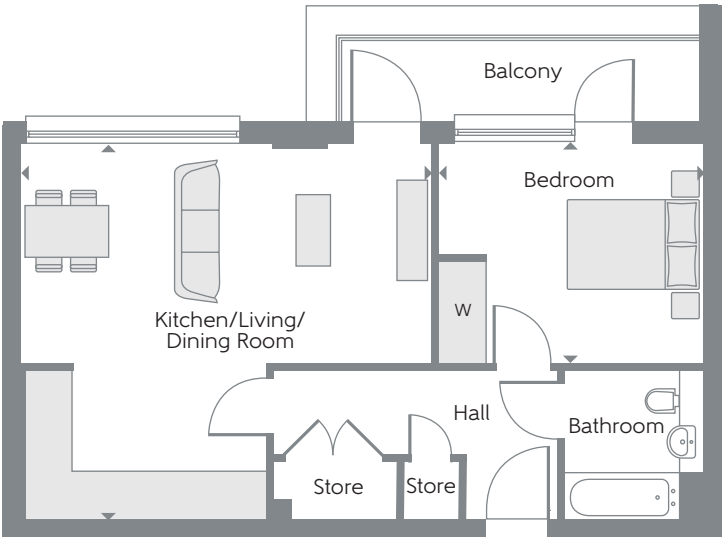
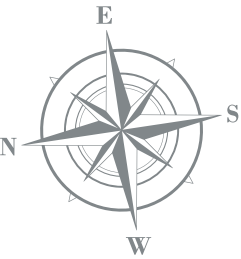
TYPE F-07
One Bedroom Apartment
Plot 439



Kitchen/Living/ Dining Room	5.86m x 4.69m	19'3" x 15'5"
Bedroom	4.00m x 2.81m	13'1" x 9'3"
Total area	58.8 sq.m.	633 sq.ft.

AUBURN
APARTMENTS

TYPE F-09
One Bedroom Apartment
Plot 441

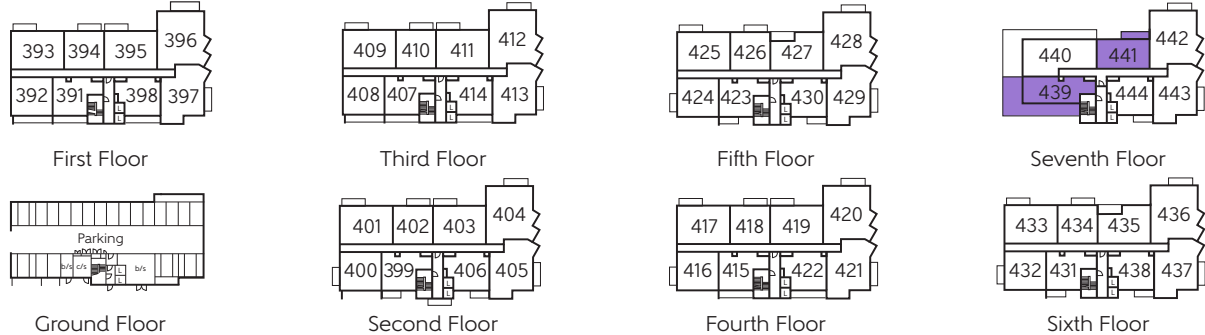


Kitchen/Living/ Dining Room	6.04m x 5.53m	19'10" x 18'2"
Bedroom	3.89m x 3.24m	12'9" x 10'8"
Total area	55.7 sq.m.	600 sq.ft.

W Fitted Wardrobe c/s Cycle Store b/s Bin Store L Lift ► Indicates where dimensions are taken from

Some items shown in this key may be subject to change, and positions could vary from those indicated on this floorplan. Please refer to Sales Advisor for details of your selected plot. External finishes and landscaping may vary. Please refer to Sales Advisor for further details. All dimensions are approximate and should not be used for carpet sizes, appliance spaces or furniture. Furniture not to scale and all positions are indicative. **Kitchen layouts are subject to change.** We operate a policy of continuous improvement and individual features such as kitchen and bathroom layouts, doors, windows, garages and elevational treatments may vary from time to time. Consequently these particulars should be treated as general guidance only and do not constitute a contract, part of a contract or a warranty. Types F-07 and F-09.

▲ View towards Central Park



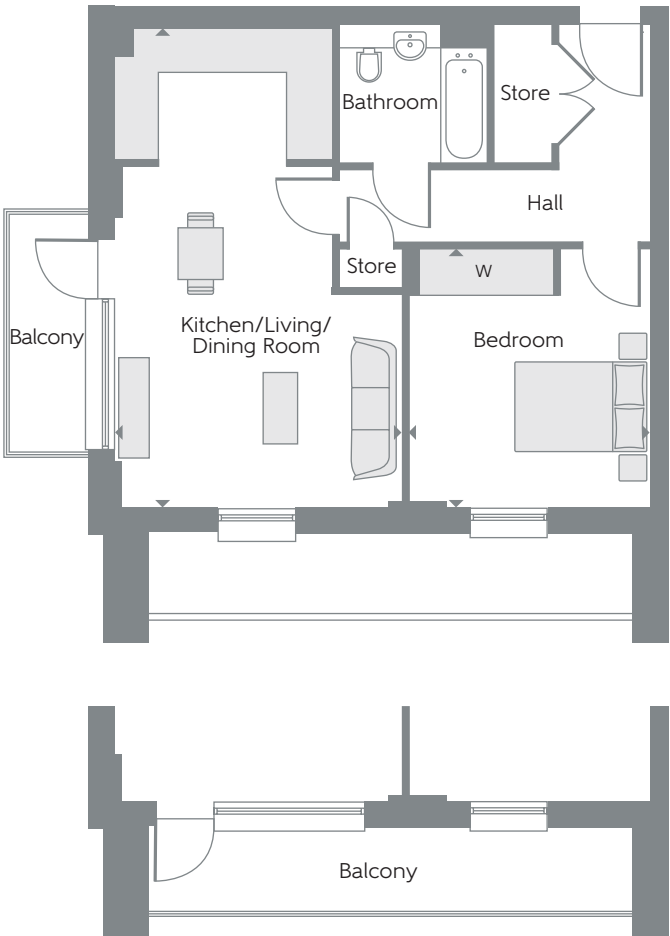


View towards Central Park from the Show Apartment.

AUBURN
APARTMENTS

TYPE F3-15

One Bedroom Apartment
Plots 392, 400, 408, 416, 424 & 432



Additional full width balcony to plots 392 & 408 only

Kitchen/Living/ Dining Room	7.05m x 4.22m	23'2" x 13'10"
Bedroom	3.82m x 3.55m	12'6" x 11'8"
Total area	56.5 sq.m.	608 sq.ft

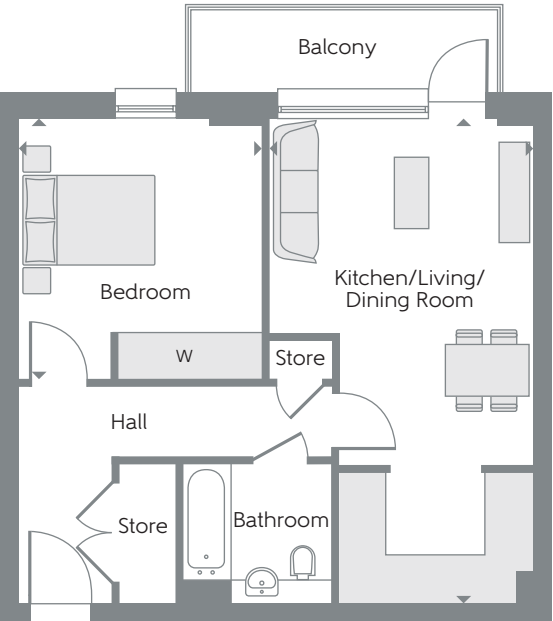
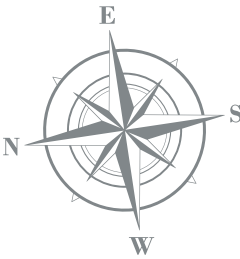
W Fitted Wardrobe c/s Cycle Store b/s Bin Store L Lift ► Indicates where dimensions are taken from

Some items shown in this key may be subject to change, and positions could vary from those indicated on this floorplan. Please refer to Sales Advisor for details of your selected plot. External finishes and landscaping may vary. Please refer to Sales Advisor for further details. All dimensions are approximate and should not be used for carpet sizes, appliance spaces or furniture. Furniture not to scale and all positions are indicative. **Kitchen layouts are subject to change.** We operate a policy of continuous improvement and individual features such as kitchen and bathroom layouts, doors, windows, garages and elevational treatments may vary from time to time. Consequently these particulars should be treated as general guidance only and do not constitute a contract, part of a contract or a warranty. Types F3-15 and F3-16.

AUBURN
APARTMENTS

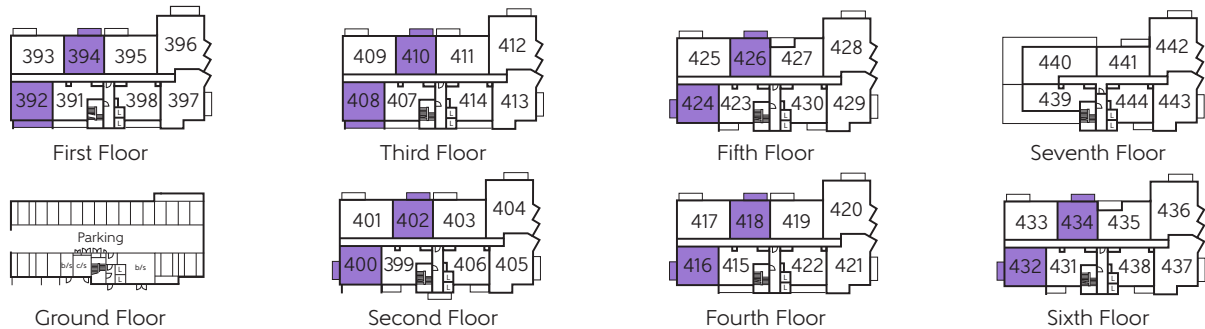
TYPE F3-16

One Bedroom Apartment
Plots 394, 402, 410, 418, 426 & 434



Kitchen/Living/ Dining Room	7.05m x 3.91m	23'2" x 12'10"
Bedroom	3.82m x 3.54m	12'6" x 11'7"
Total area	56.5 sq.m.	608 sq.ft.

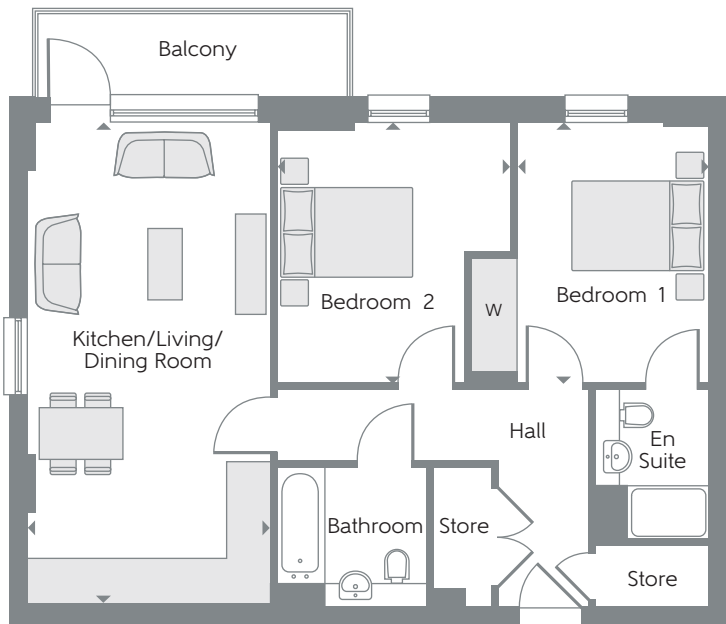
▲ View towards Central Park



AUBURN APARTMENTS

TYPE F-03

Two Bedroom Apartments
Plots 393, 395, 401, 403, 409, 411, 417,
419, 425 & 433

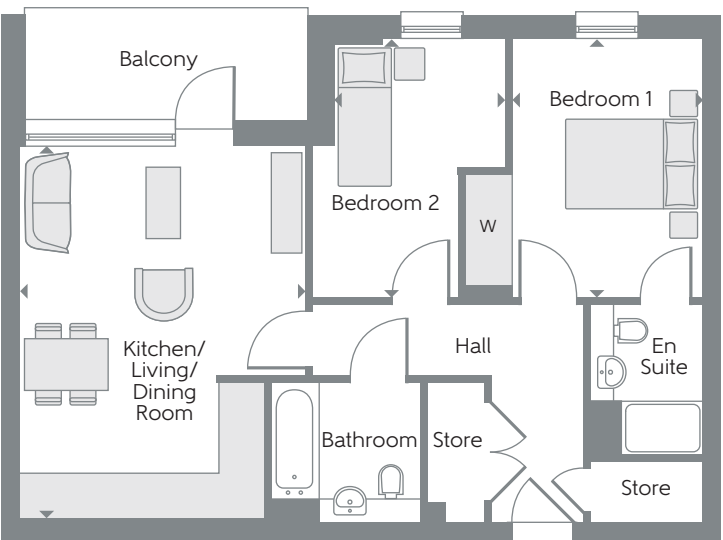
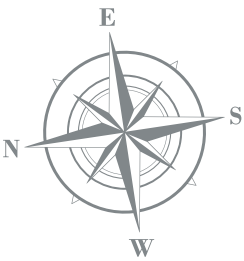


Kitchen/Living/ Dining Room	7.05m x 3.65m	23'2" x 12'0"
Bedroom 1	3.82m x 2.80m	12'6" x 9'2"
Bedroom 2	3.82m x 3.45m	12'6" x 11'4"
Total area	71.7 sq.m.	772 sq.ft.

AUBURN APARTMENTS

TYPE F-06

Two Bedroom Apartments
Plots 427 & 435



Kitchen/Living/ Dining Room	5.54m x 4.19m	18'2" x 13'9"
Bedroom 1	3.82m x 2.80m	12'6" x 9'2"
Bedroom 2	3.82m x 2.51m	12'6" x 8'3"
Total area	64.6 sq.m.	696 sq.ft.

W Fitted Wardrobe c/s Cycle Store b/s Bin Store L Lift ► Indicates where dimensions are taken from

Some items shown in this key may be subject to change, and positions could vary from those indicated on this floorplan. Please refer to Sales Advisor for details of your selected plot. External finishes and landscaping may vary. Please refer to Sales Advisor for further details. All dimensions are approximate and should not be used for carpet sizes, appliance spaces or furniture. Furniture not to scale and all positions are indicative. **Kitchen layouts are subject to change.** We operate a policy of continuous improvement and individual features such as kitchen and bathroom layouts, doors, windows, garages and elevational treatments may vary from time to time. Consequently these particulars should be treated as general guidance only and do not constitute a contract, part of a contract or a warranty. Types F-03 and F-06.

▲ View towards Central Park



First Floor



Ground Floor



Third Floor



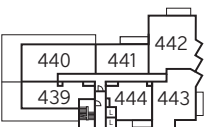
Second Floor



Fifth Floor



Fourth Floor



Seventh Floor

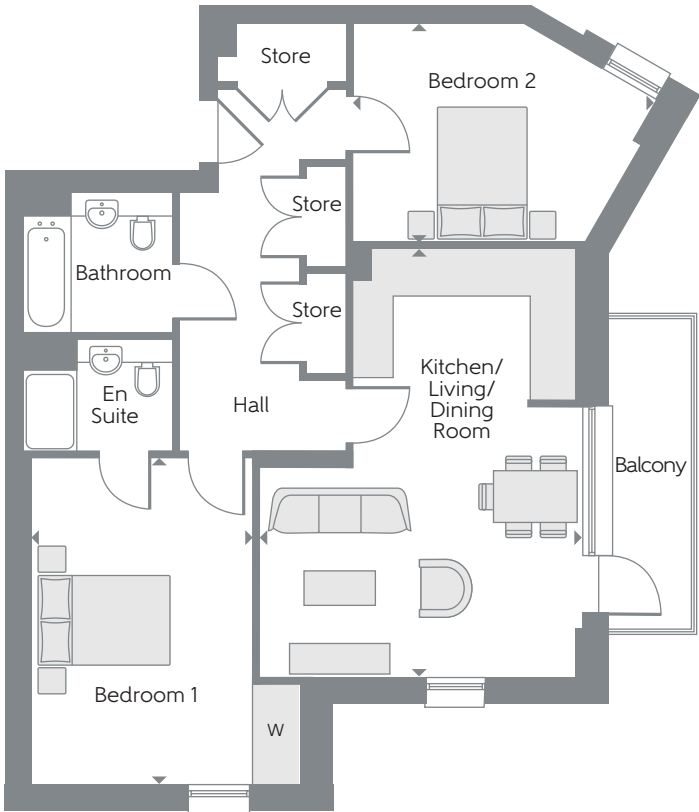


Sixth Floor

AUBURN APARTMENTS

TYPE F3-18

Two Bedroom Apartments
Plots 397, 405, 413, 421, 429, 437 & 443

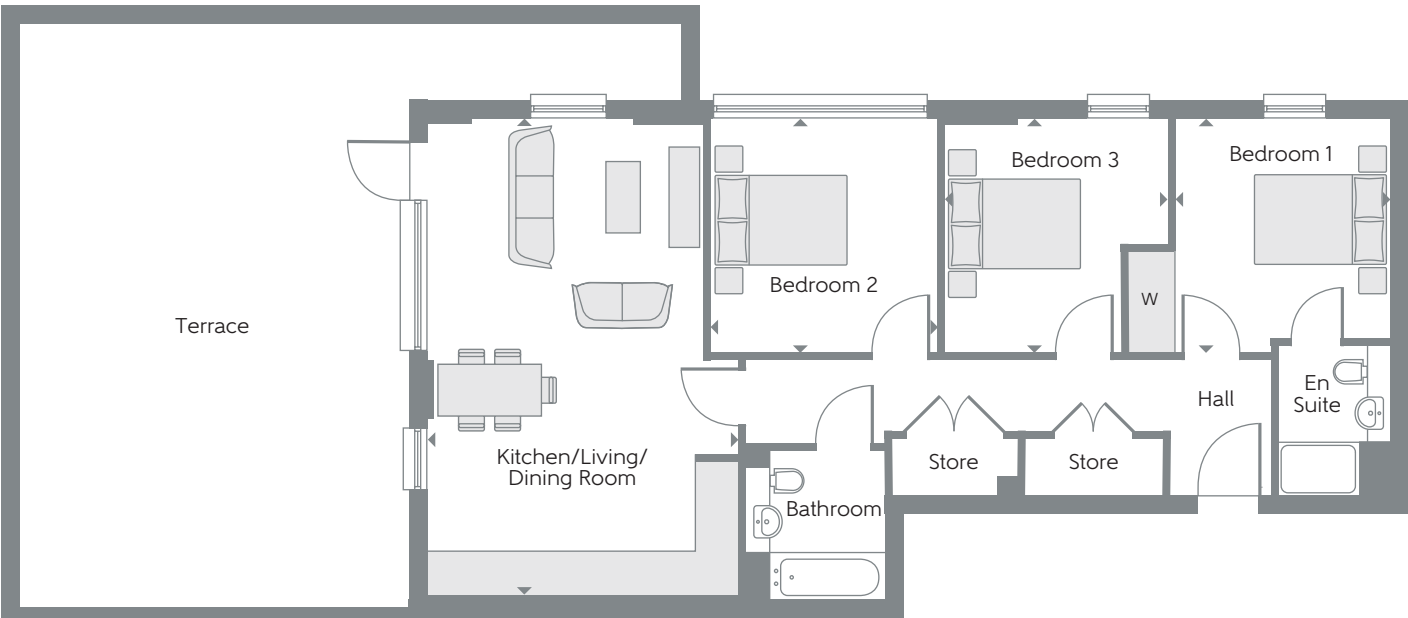
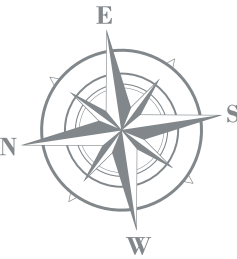


Kitchen/Living/ Dining Room	6.29m x 4.76m	20'8" x 15'7"
Bedroom 1	4.80m x 3.24m	15'9" x 10'8"
Bedroom 2	4.49m x 3.20m	14'9" x 10'6"
Total area	79.7 sq.m.	858 sq.ft.

AUBURN APARTMENTS

TYPE F-08

Three Bedroom Apartment
Plot 440

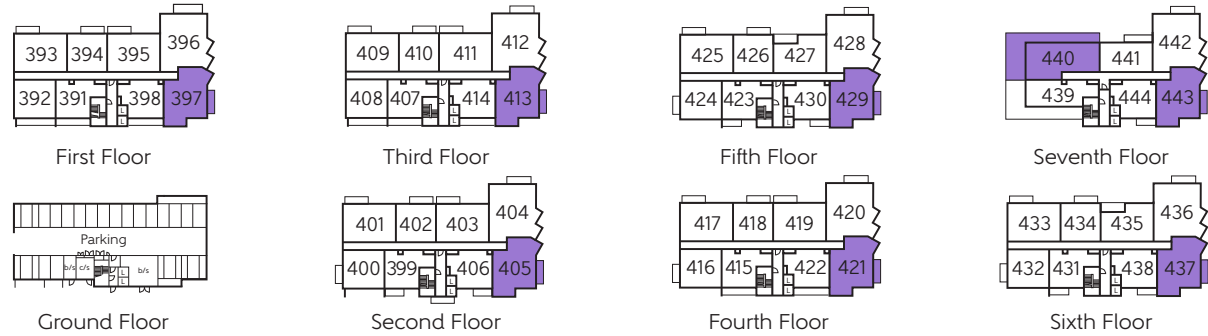


Kitchen/Living/ Dining Room	7.07m x 4.61m	23'2" x 15'1"
Bedroom 1	3.45m x 3.16m	11'4" x 10'4"
Bedroom 2	3.45m x 3.35m	11'4" x 11'0"
Bedroom 3	3.45m x 3.30m	11'4" x 10'10"
Total area	88.4 sq.m.	952 sq.ft.

W Fitted Wardrobe c/s Cycle Store b/s Bin Store L Lift ► Indicates where dimensions are taken from

Some items shown in this key may be subject to change, and positions could vary from those indicated on this floorplan. Please refer to Sales Advisor for details of your selected plot. External finishes and landscaping may vary. Please refer to Sales Advisor for further details. All dimensions are approximate and should not be used for carpet sizes, appliance spaces or furniture. Furniture not to scale and all positions are indicative. **Kitchen layouts are subject to change.** We operate a policy of continuous improvement and individual features such as kitchen and bathroom layouts, doors, windows, garages and elevational treatments may vary from time to time. Consequently these particulars should be treated as general guidance only and do not constitute a contract, part of a contract or a warranty. Types F3-18 and F-08.

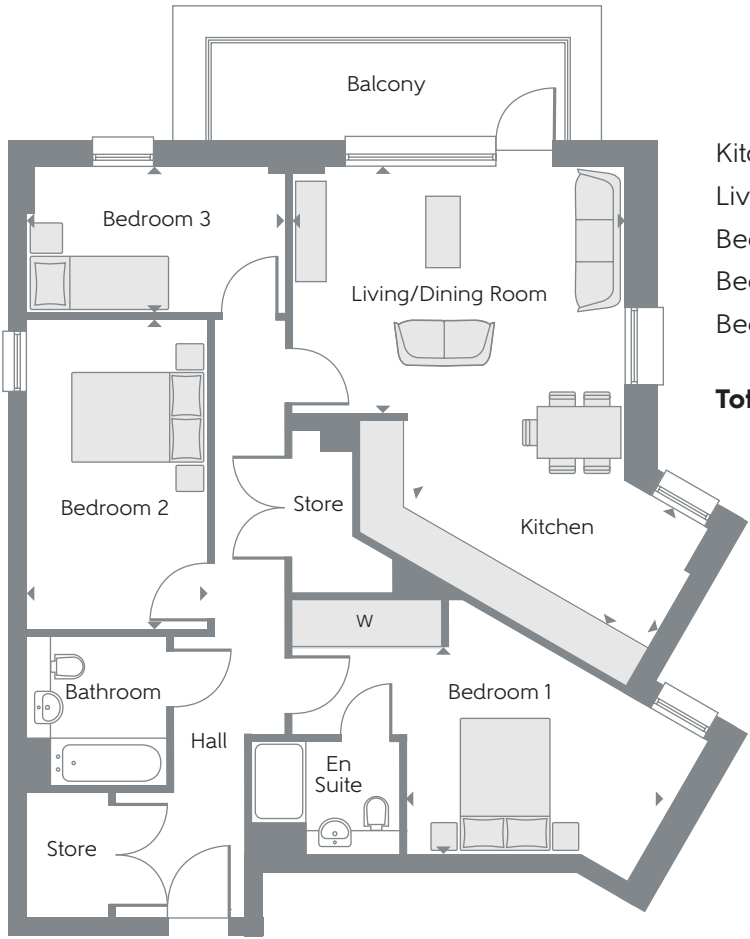
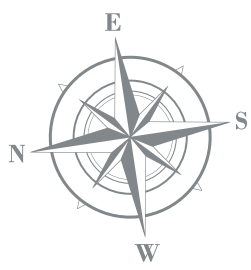
▲ View towards Central Park



AUBURN APARTMENTS

TYPE F3-17

Three Bedroom Apartment
Plots 396, 404, 412, 420, 428,
436 & 442

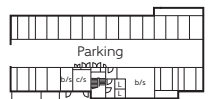


Kitchen	4.14m x 2.01m	13'7" x 6'7"
Living/Dining Room	4.89m x 3.64m	16'1" x 11'11"
Bedroom 1	4.42m x 3.05m	14'6" x 10'0"
Bedroom 2	4.55m x 2.65m	14'11" x 8'8"
Bedroom 3	3.80m x 2.17m	12'6" x 7'1"
Total area	96.6 sq.m.	1040 sq.ft.

▲ View towards Central Park



First Floor



Ground Floor



Third Floor



Second Floor



Fifth Floor



Fourth Floor



Seventh Floor



Sixth Floor

W Fitted Wardrobe c/s Cycle Store b/s Bin Store L Lift ► Indicates where dimensions are taken from

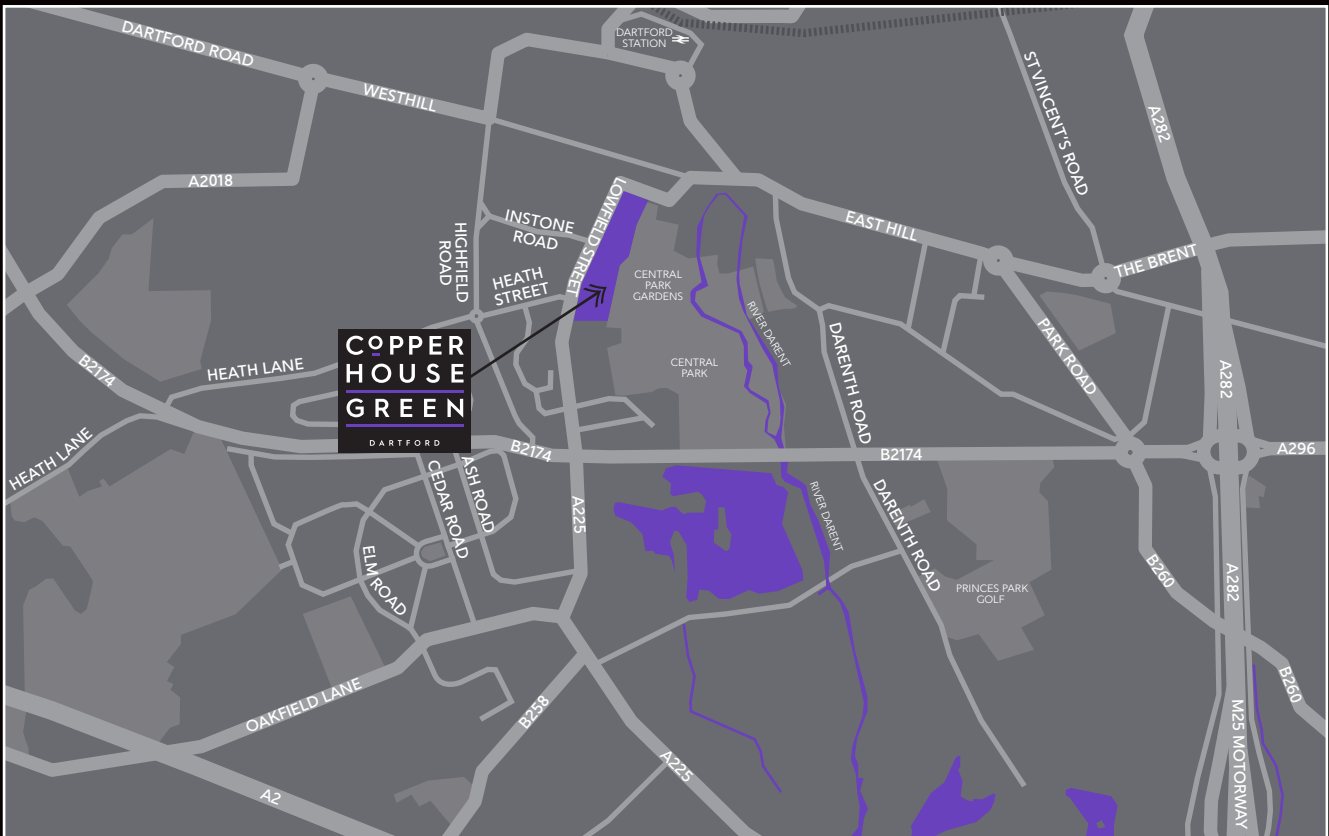
Some items shown in this key may be subject to change, and positions could vary from those indicated on this floorplan. Please refer to Sales Advisor for details of your selected plot. External finishes and landscaping may vary. Please refer to Sales Advisor for further details. All dimensions are approximate and should not be used for carpet sizes, appliance spaces or furniture. Furniture not to scale and all positions are indicative. **Kitchen layouts are subject to change.** We operate a policy of continuous improvement and individual features such as kitchen and bathroom layouts, doors, windows, garages and elevational treatments may vary from time to time. Consequently these particulars should be treated as general guidance only and do not constitute a contract, part of a contract or a warranty. Type F3-17.

COPPERHOUSE GREEN



Show home at Copperhouse Green.

LOWFIELD STREET, DARTFORD DA1 1HJ



Map not to scale.