

COPPER HOUSE GREEN

DARTFORD

**FREEMONT COURT
FLOOR PLANS**

APARTMENTS 503-525

COPPERHOUSE GREEN

DARTFORD

DEVELOPMENT PLAN



- Current Phase
- Future Phase
- Previous Phase
- Housing Association

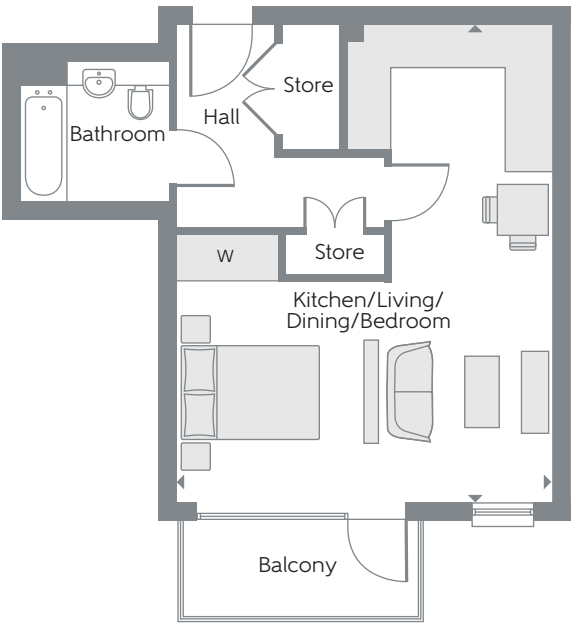
The site plan is drawn to show the relative position of individual properties. Not to scale. These are drawings and will not show land contours and gradients, boundary treatments, landscaping or local authority street lighting. Footpaths subject to change. For details of individual properties and availability please refer to our Sales Advisor. Block names are for marketing purposes only.



FREEMONT COURT

TYPE GJ-06

Studio Apartments
Plots 508, 514 & 520



Kitchen/Living/ Dining/Bedroom	7.03m x 5.53m	23'1" x 18'2"
Total area	44.3 sq.m.	477 sq.ft.

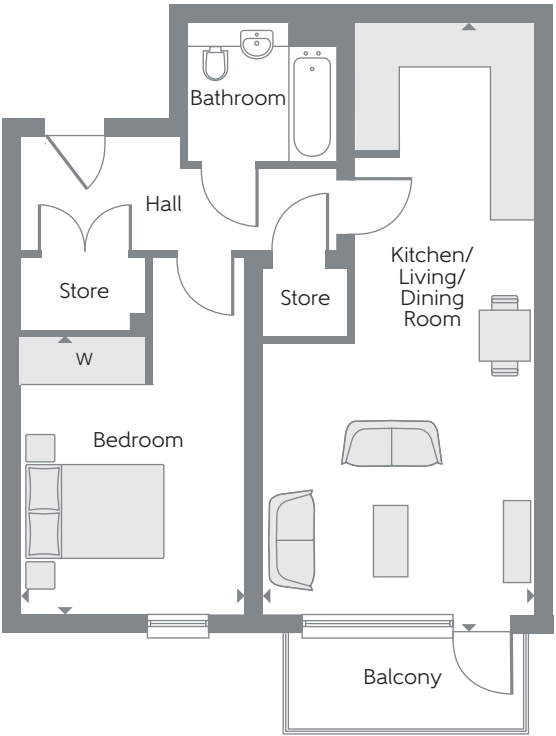
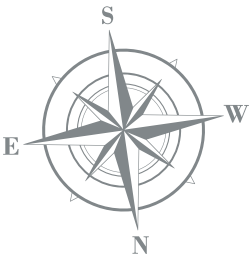
W Fitted Wardrobe c/s Cycle Store b/s Bin Store L Lift ► Indicates where dimensions are taken from

Some items shown in this key may be subject to change, and positions could vary from those indicated on this floorplan. Please refer to Sales Advisor for details of your selected plot. External finishes and landscaping may vary. Please refer to Sales Advisor for further details. All dimensions are approximate and should not be used for carpet sizes, appliance spaces or furniture. Furniture not to scale and all positions are indicative. **Kitchen layouts are subject to change.** We operate a policy of continuous improvement and individual features such as kitchen and bathroom layouts, doors, windows, garages and elevational treatments may vary from time to time. Consequently these particulars should be treated as general guidance only and do not constitute a contract, part of a contract or a warranty. Types GJ-06 and GJ-05.

FREEMONT COURT

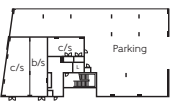
TYPE GJ-05

One Bedroom Apartments
Plots 507, 513 & 519

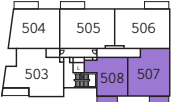


Kitchen/Living/ Dining Room	8.94m x 3.99m	29'4" x 13'1"
Bedroom	4.06m x 3.29m	13'4" x 10'10"
Total area	62.3 sq.m.	671 sq.ft.

◀ Central Park



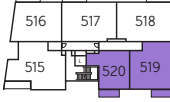
Ground Floor



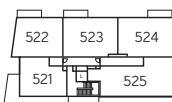
First Floor



Second Floor



Third Floor

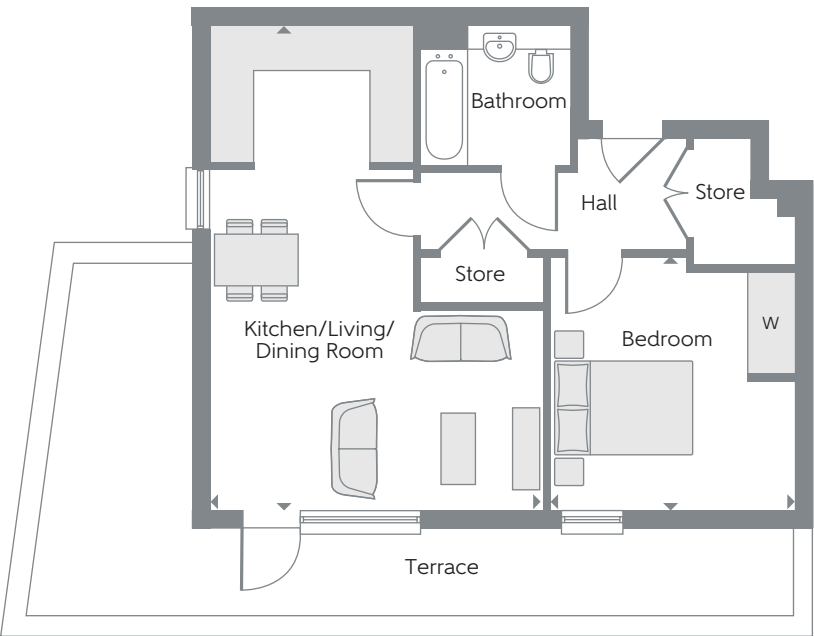


Fourth Floor

FREEMONT COURT

TYPE GJ-08

One Bedroom Apartment
Plot 521

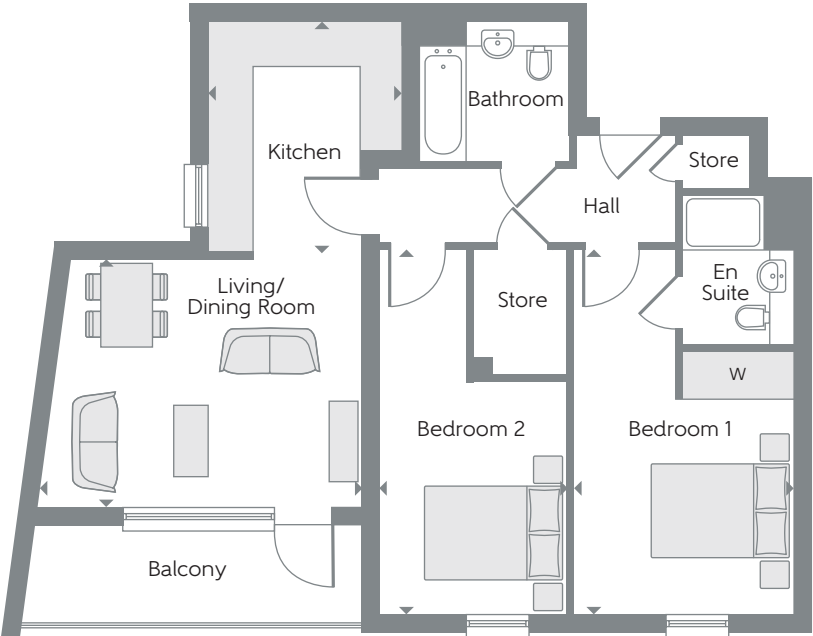
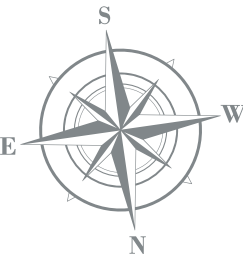


Kitchen/Living/ Dining Room	7.12m x 4.91m	23'4" x 16'1"
Bedroom	3.73m x 3.60m	12'3" x 11'10"
Total area	55.8 sq.m.	601 sq.ft.

FREEMONT COURT

TYPE GJ-01

Two Bedroom Apartments
Plots 503, 509 & 515



Kitchen	3.39m x 2.73m	11'1" x 8'11"
Living/Dining Room	4.76m x 3.63m	15'7" x 11'11"
Bedroom 1	5.36m x 3.24m	17'7" x 10'8"
Bedroom 2	5.36m x 2.75m	17'7" x 9'0"
Total area	73.7 sq.m.	793 sq.ft.

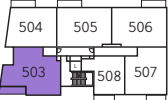
W Fitted Wardrobe c/s Cycle Store b/s Bin Store L Lift ► Indicates where dimensions are taken from

Some items shown in this key may be subject to change, and positions could vary from those indicated on this floorplan. Please refer to Sales Advisor for details of your selected plot. External finishes and landscaping may vary. Please refer to Sales Advisor for further details. All dimensions are approximate and should not be used for carpet sizes, appliance spaces or furniture. Furniture not to scale and all positions are indicative. **Kitchen layouts are subject to change.** We operate a policy of continuous improvement and individual features such as kitchen and bathroom layouts, doors, windows, garages and elevational treatments may vary from time to time. Consequently these particulars should be treated as general guidance only and do not constitute a contract, part of a contract or a warranty. Types GJ-08 and GJ-01.

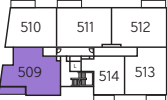
◀ Central Park



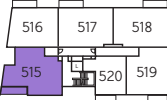
Ground Floor



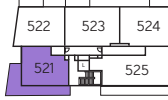
First Floor



Second Floor



Third Floor



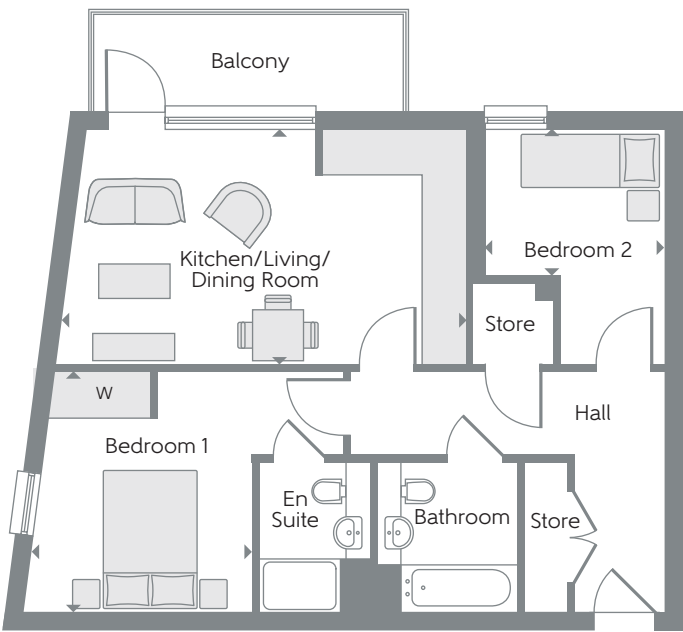
Fourth Floor



FREEMONT COURT

TYPE GJ-02

Two Bedroom Apartments
Plots 504, 510, 516 & 522

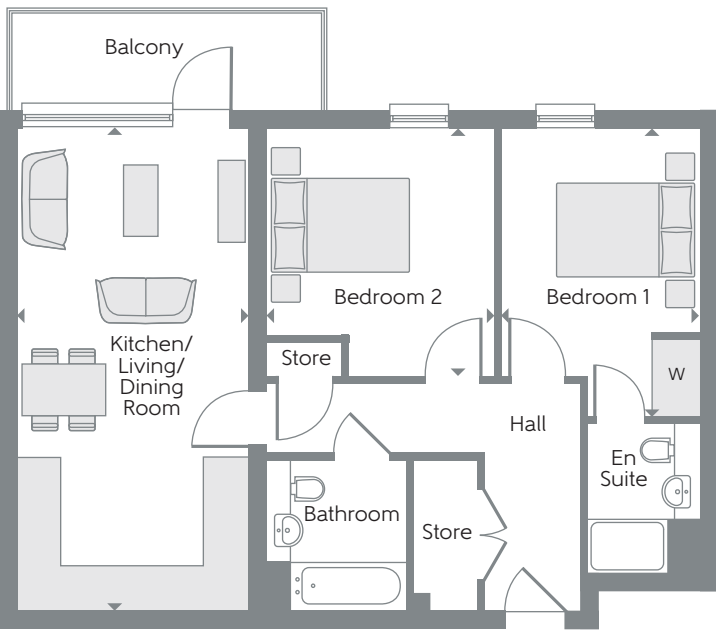
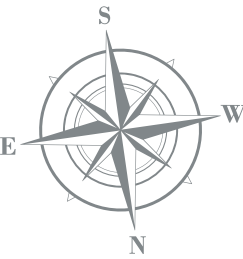


Kitchen/Living/ Dining Room	5.38m x 3.46m	17'8" x 11'4"
Bedroom 1	3.55m x 3.25m	11'8" x 10'8"
Bedroom 2	2.65m x 2.15m	8'8" x 7'1"
Total area	64.2 sq.m.	691 sq.ft

FREEMONT COURT

TYPE GJ-03

Two Bedroom Apartments
Plots 505, 511, 517 & 523

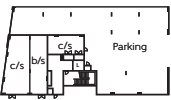


Kitchen/Living/ Dining Room	7.08m x 3.40m	23'3" x 11'2"
Bedroom 1	4.24m x 2.92m	13'11" x 9'7"
Bedroom 2	3.64m x 3.35m	11'11" x 11'0"
Total area	70.8 sq.m.	762 sq.ft..

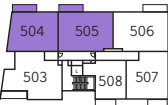
W Fitted Wardrobe c/s Cycle Store b/s Bin Store L Lift ► Indicates where dimensions are taken from

Some items shown in this key may be subject to change, and positions could vary from those indicated on this floorplan. Please refer to Sales Advisor for details of your selected plot. External finishes and landscaping may vary. Please refer to Sales Advisor for further details. All dimensions are approximate and should not be used for carpet sizes, appliance spaces or furniture. Furniture not to scale and all positions are indicative. **Kitchen layouts are subject to change.** We operate a policy of continuous improvement and individual features such as kitchen and bathroom layouts, doors, windows, garages and elevational treatments may vary from time to time. Consequently these particulars should be treated as general guidance only and do not constitute a contract, part of a contract or a warranty. Types GJ-02 and GJ-03.

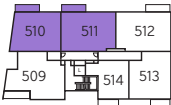
◀ Central Park



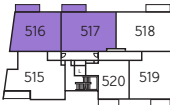
Ground Floor



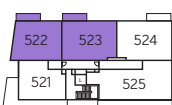
First Floor



Second Floor



Third Floor

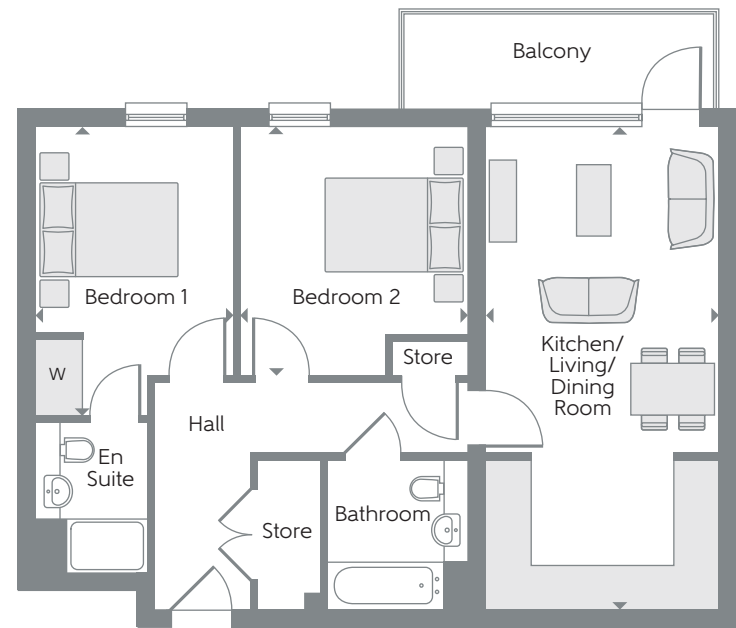


Fourth Floor

FREEMONT COURT

TYPE GJ-04

Two Bedroom Apartments
Plots 506, 512, 518 & 524

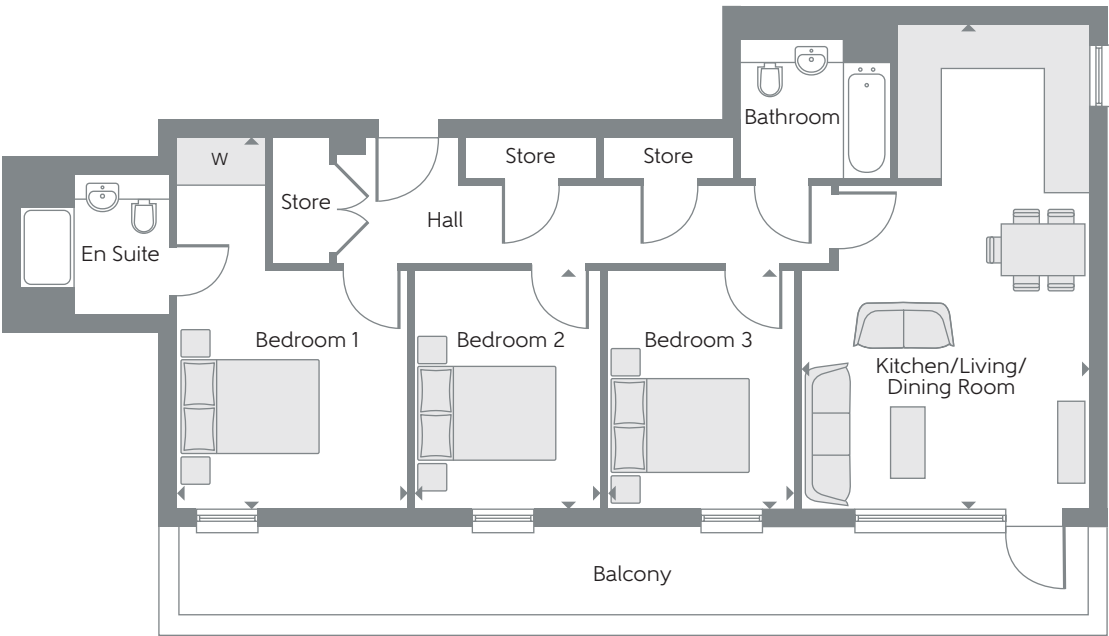
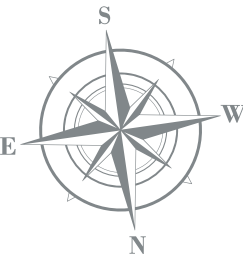


Kitchen/Living/ Dining Room	7.08m x 3.41m	23'3" x 11'2"
Bedroom 1	4.24m x 2.92m	13'11" x 9'7"
Bedroom 2	3.64m x 3.35m	11'11" x 11'0"
Total area	70.8 sq.m.	762 sq.ft.

FREEMONT COURT

TYPE GJ-07

Three Bedroom Apartment
Plot 525

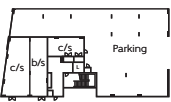


Kitchen/Living/ Dining Room	7.12m x 4.24m	23'4" x 13'11"
Bedroom 1	5.45m x 3.38m	17'11" x 11'1"
Bedroom 2	3.51m x 2.75m	11'6" x 9'0"
Bedroom 3	3.51m x 2.75m	11'6" x 9'0"
Total area	87.0 sq.m.	936 sq.ft.

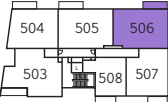
W Fitted Wardrobe c/s Cycle Store b/s Bin Store L Lift ► Indicates where dimensions are taken from

Some items shown in this key may be subject to change, and positions could vary from those indicated on this floorplan. Please refer to Sales Advisor for details of your selected plot. External finishes and landscaping may vary. Please refer to Sales Advisor for further details. All dimensions are approximate and should not be used for carpet sizes, appliance spaces or furniture. Furniture not to scale and all positions are indicative. **Kitchen layouts are subject to change.** We operate a policy of continuous improvement and individual features such as kitchen and bathroom layouts, doors, windows, garages and elevational treatments may vary from time to time. Consequently these particulars should be treated as general guidance only and do not constitute a contract, part of a contract or a warranty. Types G J-04 and GJ-07.

◀ Central Park



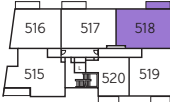
Ground Floor



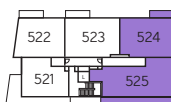
First Floor



Second Floor

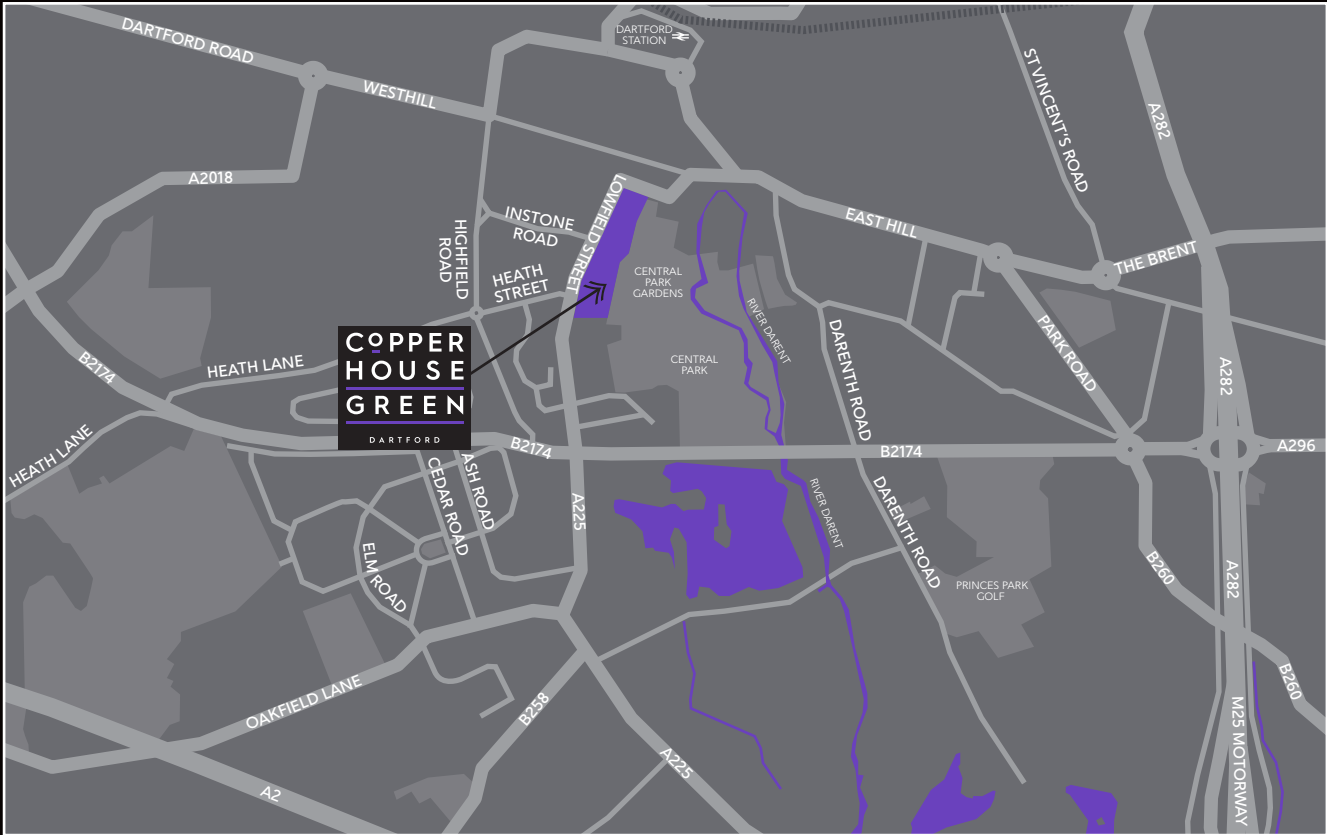


Third Floor



Fourth Floor

LOWFIELD STREET, DARTFORD DA1 1HJ



Map not to scale.