

COPPER HOUSE GREEN

DARTFORD

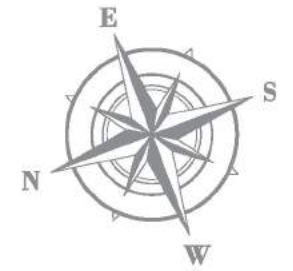
**HARP LODGE
FLOOR PLANS**

APARTMENTS 468-502

COPPERHOUSE GREEN

DARTFORD

DEVELOPMENT PLAN



- Current Phase
- Future Phase
- Previous Phase
- Housing Association

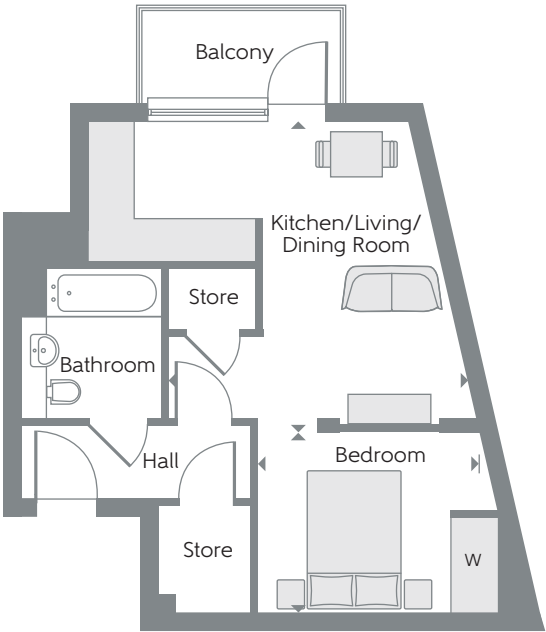
The site plan is drawn to show the relative position of individual properties. Not to scale. These are drawings and will not show land contours and gradients, boundary treatments, landscaping or local authority street lighting. Footpaths subject to change. For details of individual properties and availability please refer to our Sales Advisor. Block names are for marketing purposes only.



HARP LODGE

TYPE H-07

One Bedroom Studio Apartments
Plots 479 & 490



Kitchen/Living/ Dining Room	4.55m x 4.53m	14'11" x 14'10"
Bedroom	3.27m x 2.65m	10'9" x 8'8"
Total area	42.3 sq.m.	455 sq.ft.

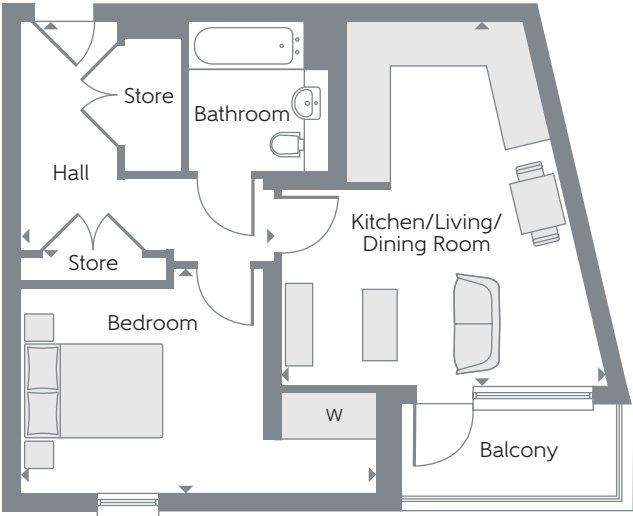
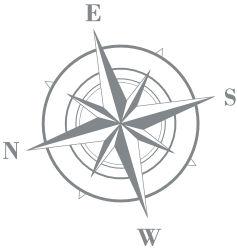
W Fitted Wardrobe c/s Cycle Store b/s Bin Store L Lift ► Indicates where dimensions are taken from

Some items shown in this key may be subject to change, and positions could vary from those indicated on this floorplan. Please refer to Sales Advisor for details of your selected plot. External finishes and landscaping may vary. Please refer to Sales Advisor for further details. All dimensions are approximate and should not be used for carpet sizes, appliance spaces or furniture. Furniture not to scale and all positions are indicative. **Kitchen layouts are subject to change.** We operate a policy of continuous improvement and individual features such as kitchen and bathroom layouts, doors, windows, garages and elevational treatments may vary from time to time. Consequently these particulars should be treated as general guidance only and do not constitute a contract, part of a contract or a warranty. Types H-07 and H-02.

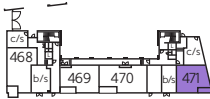
HARP LODGE

TYPE H-02

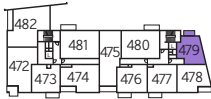
One Bedroom Apartment
Plot 471



Kitchen/Living/ Dining Room	5.35m x 4.75m	17'7" x 15'7"
Bedroom	5.22m x 3.31m	17'2" x 10'10"
Total area	51.6 sq.m.	555 sq.ft.



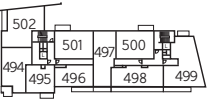
Ground Floor



First Floor



Second Floor



Third Floor

HARP LODGE

TYPE HK-03
One Bedroom Apartment
Plots 473, 484 & 495



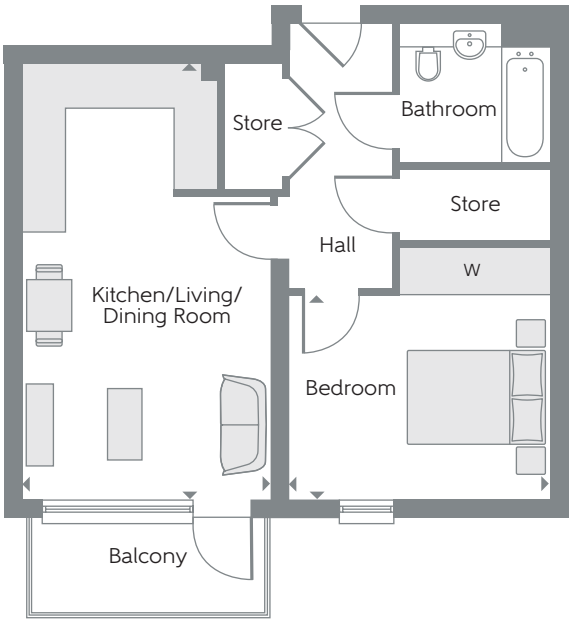
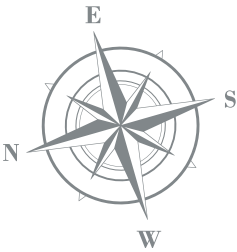
Kitchen/Living/ Dining Room	7.00m x 3.69m	23'0" x 12'1"
Bedroom	3.45m x 3.41m	11'4" x 11'2"
Total area	52.3 sq.m.	563 sq.ft.

W Fitted Wardrobe c/s Cycle Store b/s Bin Store L Lift ► Indicates where dimensions are taken from

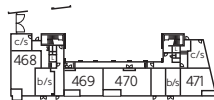
Some items shown in this key may be subject to change, and positions could vary from those indicated on this floorplan. Please refer to Sales Advisor for details of your selected plot. External finishes and landscaping may vary. Please refer to Sales Advisor for further details. All dimensions are approximate and should not be used for carpet sizes, appliance spaces or furniture. Furniture not to scale and all positions are indicative. **Kitchen layouts are subject to change.** We operate a policy of continuous improvement and individual features such as kitchen and bathroom layouts, doors, windows, garages and elevational treatments may vary from time to time. Consequently these particulars should be treated as general guidance only and do not constitute a contract, part of a contract or a warranty. Types HK-03 and H-04..

HARP LODGE

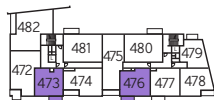
TYPE H-04
One Bedroom Apartment
Plots 476 & 487



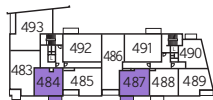
Kitchen/Living/ Dining Room	6.41m x 3.66m	21'0" x 12'0"
Bedroom	3.82m x 3.01m	12'6" x 9'11"
Total area	52.6 sq.m.	566 sq.ft.



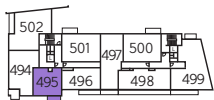
Ground Floor



First Floor



Second Floor

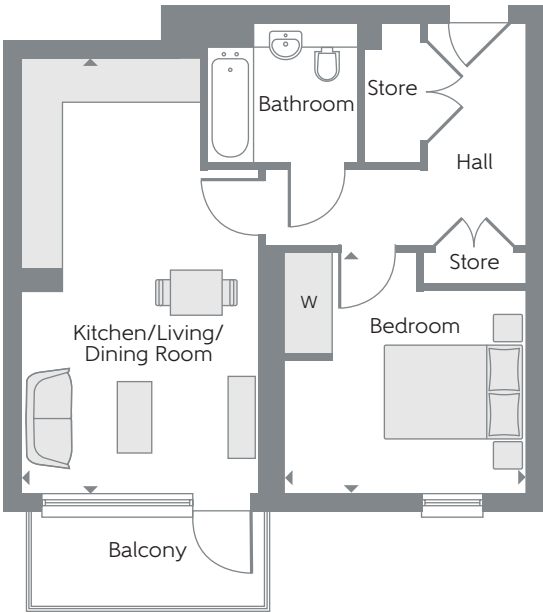


Third Floor

HARP LODGE

TYPE H-05

One Bedroom Apartment
Plots 477 & 488

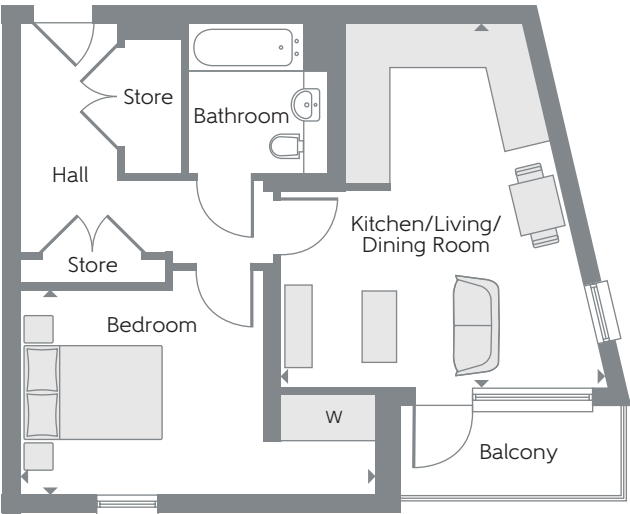
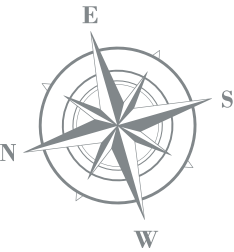


Kitchen/Living/ Dining Room	6.41m x 3.53m	21'0" x 11'7"
Bedroom	3.56m x 3.52m	11'8" x 11'7"
Total area	51.5 sq.m.	554 sq.ft.

HARP LODGE

TYPE H-06

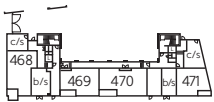
One Bedroom Apartment
Plots 478 & 489



Kitchen/Living/ Dining Room	5.35m x 4.78m	17'7" x 15'8"
Bedroom	5.22m x 3.00m	17'2" x 9'10"
Total area	51.4 sq.m.	553 sq.ft.

W Fitted Wardrobe c/s Cycle Store b/s Bin Store L Lift ► Indicates where dimensions are taken from

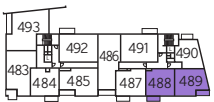
Some items shown in this key may be subject to change, and positions could vary from those indicated on this floorplan. Please refer to Sales Advisor for details of your selected plot. External finishes and landscaping may vary. Please refer to Sales Advisor for further details. All dimensions are approximate and should not be used for carpet sizes, appliance spaces or furniture. Furniture not to scale and all positions are indicative. **Kitchen layouts are subject to change.** We operate a policy of continuous improvement and individual features such as kitchen and bathroom layouts, doors, windows, garages and elevational treatments may vary from time to time. Consequently these particulars should be treated as general guidance only and do not constitute a contract, part of a contract or a warranty. Types H-05 and H-06.



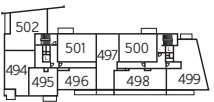
Ground Floor



First Floor



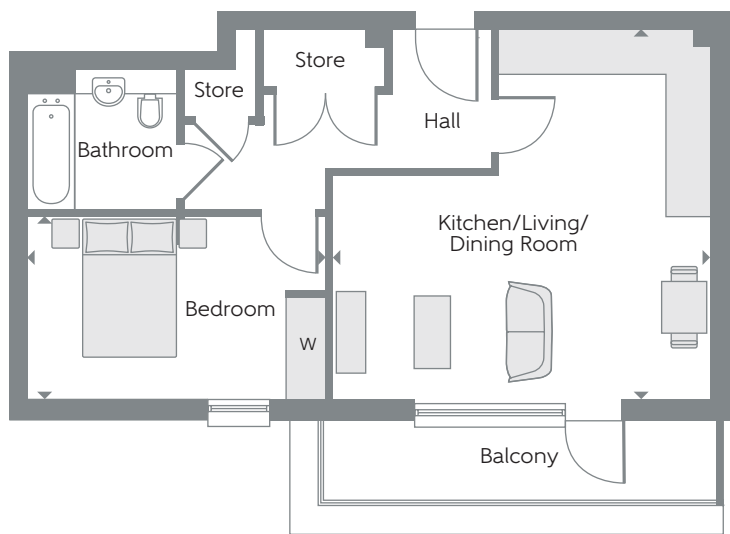
Second Floor



Third Floor

HARP LODGE

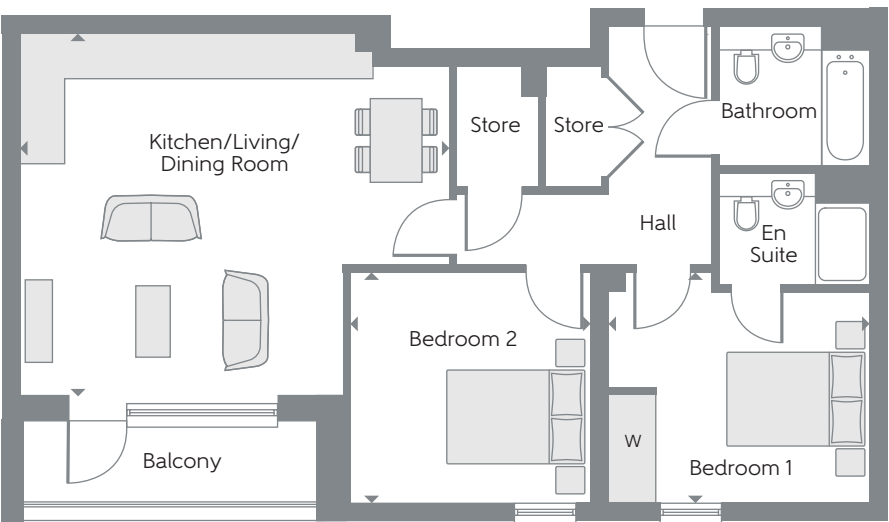
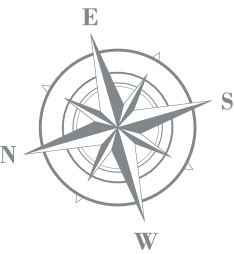
TYPE H-10
One Bedroom Apartment
Plot 496



Kitchen/Living/ Dining Room	5.55m x 5.43m	18'3" x 17'10"
Bedroom	4.39m x 2.69m	14'5" x 8'10"
Total area	53.4 sq.m.	575 sq.ft.

HARP LODGE

TYPE H-01
Two Bedroom Apartment
Plot 470



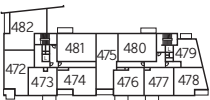
Kitchen/Living/ Dining Room	6.32m x 5.31m	20'9" x 17'5"
Bedroom 1	3.82m x 3.39m	12'6" x 11'1"
Bedroom 2	3.55m x 3.39m	11'8" x 11'1"
Total area	77.6 sq.m.	835 sq.ft.

W Fitted Wardrobe c/s Cycle Store b/s Bin Store L Lift ► Indicates where dimensions are taken from

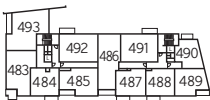
Some items shown in this key may be subject to change, and positions could vary from those indicated on this floorplan. Please refer to Sales Advisor for details of your selected plot. External finishes and landscaping may vary. Please refer to Sales Advisor for further details. All dimensions are approximate and should not be used for carpet sizes, appliance spaces or furniture. Furniture not to scale and all positions are indicative. **Kitchen layouts are subject to change.** We operate a policy of continuous improvement and individual features such as kitchen and bathroom layouts, doors, windows, garages and elevational treatments may vary from time to time. Consequently these particulars should be treated as general guidance only and do not constitute a contract, part of a contract or a warranty. Types H-10 and H-01.



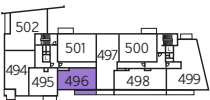
Ground Floor



First Floor



Second Floor

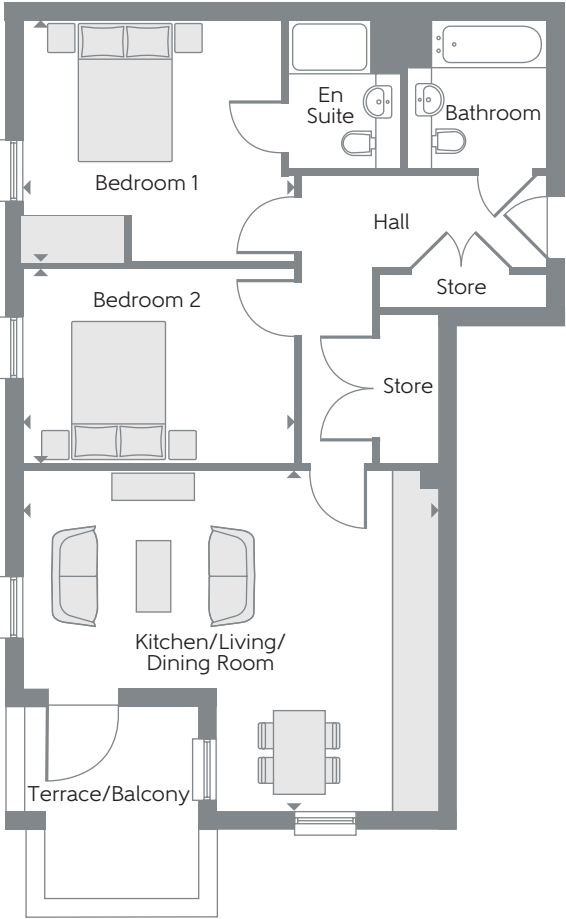


Third Floor

HARP LODGE

TYPE HK-01

Two Bedroom Apartment
Plots 468, 472, 483 & 494

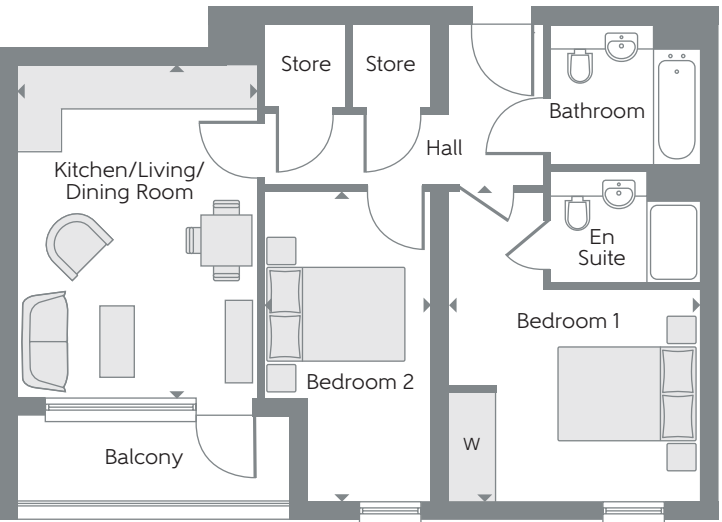
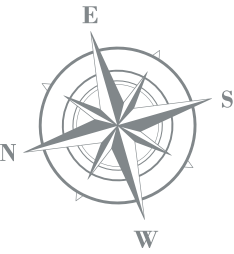


Kitchen/Living/ Dining Room	6.10m x 5.02m	20'0" x 16'6
Bedroom 1	4.01m x 3.56m	13'2" x 11'8"
Bedroom 2	4.01m x 2.86m	13'2" x 9'5"
Total area	72.3 sq.m.	778 sq.ft.

HARP LODGE

TYPE HK-02

Two Bedroom Apartment
Plots 469, 474 & 485



Kitchen/Living/ Dining Room	4.84m x 3.53m	15'11" x 11'7
Bedroom 1	4.56m x 3.69m	15'0" x 12'1"
Bedroom 2	4.56m x 2.45m	15'0" x 8'0"
Total area	62.8 sq.m.	676 sq.ft.

W Fitted Wardrobe c/s Cycle Store b/s Bin Store L Lift ► Indicates where dimensions are taken from

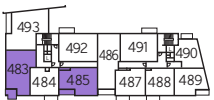
Some items shown in this key may be subject to change, and positions could vary from those indicated on this floorplan. Please refer to Sales Advisor for details of your selected plot. External finishes and landscaping may vary. Please refer to Sales Advisor for further details. All dimensions are approximate and should not be used for carpet sizes, appliance spaces or furniture. Furniture not to scale and all positions are indicative. **Kitchen layouts are subject to change.** We operate a policy of continuous improvement and individual features such as kitchen and bathroom layouts, doors, windows, garages and elevational treatments may vary from time to time. Consequently these particulars should be treated as general guidance only and do not constitute a contract, part of a contract or a warranty. Types HK-01 and HK-02.



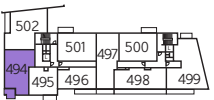
Ground Floor



First Floor



Second Floor

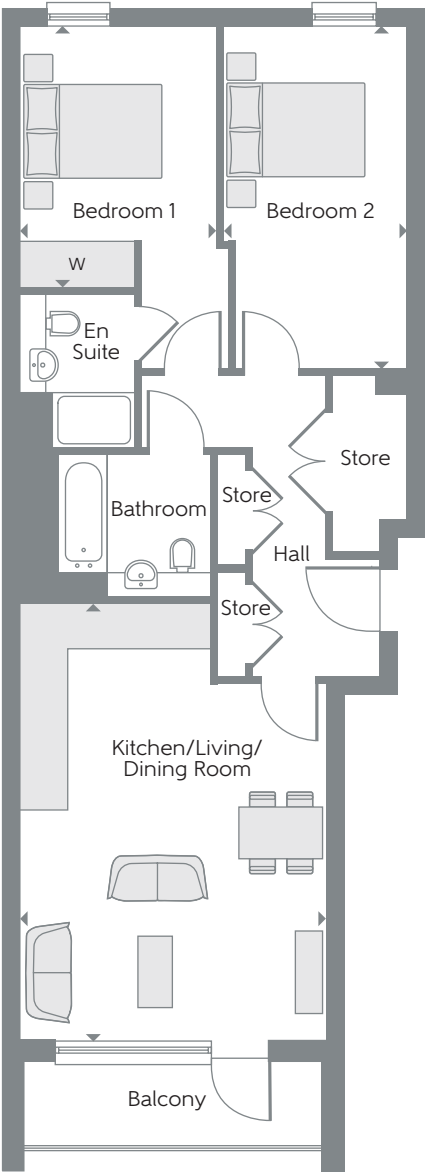


Third Floor

HARP LODGE

TYPE H-03

Two Bedroom Apartment
Plots 475 & 486



Kitchen/Living/ Dining Room	6.22m x 4.40m	20'5" x 14'5"
Bedroom 1	3.78m x 2.83m	12'5" x 9'3"
Bedroom 2	4.93m x 2.65m	16'2" x 8'8"
Total area	74.7 sq.m.	804 sq.ft.

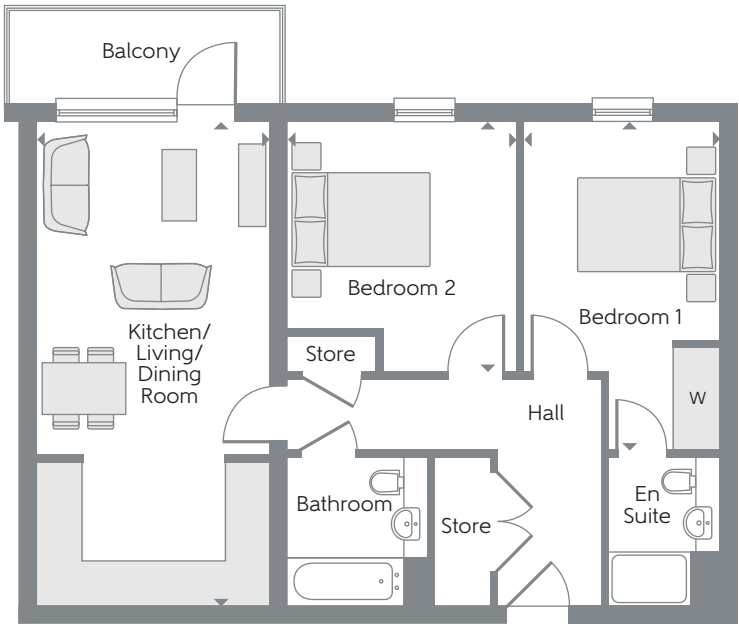
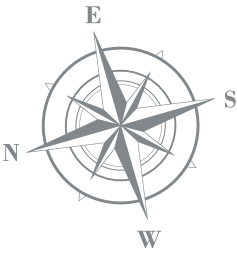
W Fitted Wardrobe c/s Cycle Store b/s Bin Store L Lift ► Indicates where dimensions are taken from

Some items shown in this key may be subject to change, and positions could vary from those indicated on this floorplan. Please refer to Sales Advisor for details of your selected plot. External finishes and landscaping may vary. Please refer to Sales Advisor for further details. All dimensions are approximate and should not be used for carpet sizes, appliance spaces or furniture. Furniture not to scale and all positions are indicative. **Kitchen layouts are subject to change.** We operate a policy of continuous improvement and individual features such as kitchen and bathroom layouts, doors, windows, garages and elevational treatments may vary from time to time. Consequently these particulars should be treated as general guidance only and do not constitute a contract, part of a contract or a warranty. Types H-03 and HK-05.

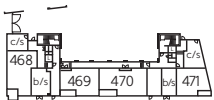
HARP LODGE

TYPE HK-05

Two Bedroom Apartment
Plots 481, 492 & 501



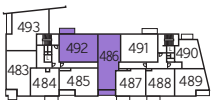
Kitchen/Living/ Dining Room	7.10m x 3.42m	23'4" x 11'3"
Bedroom 1	4.81m x 2.89m	15'9" x 9'6"
Bedroom 2	3.66m x 3.37m	12'0" x 11'1"
Total area	71.8 sq.m.	773 sq.ft.



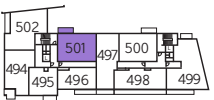
Ground Floor



First Floor



Second Floor

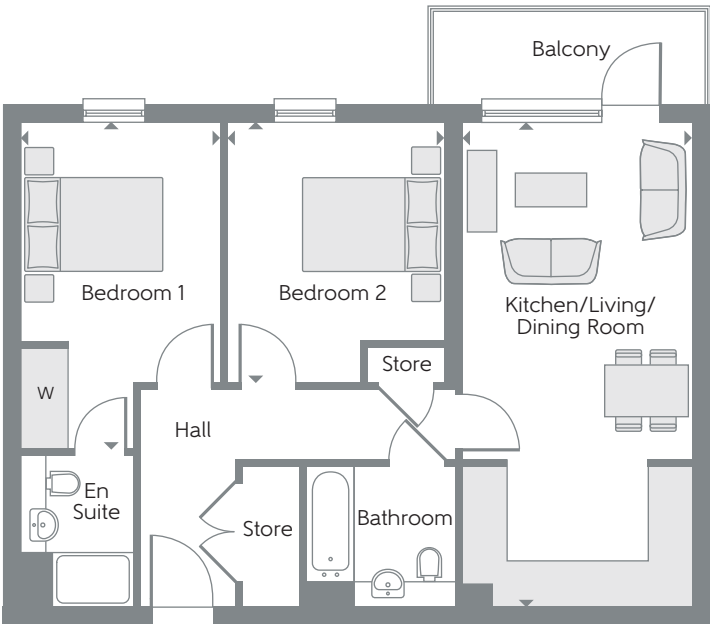


Third Floor

HARP LODGE

TYPE H-08

Two Bedroom Apartment
Plots 480, 491 & 500

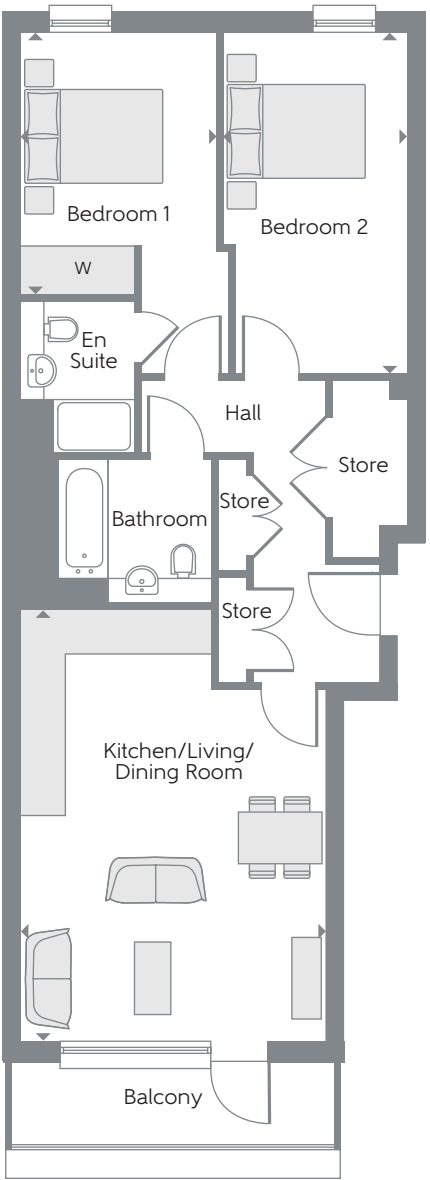
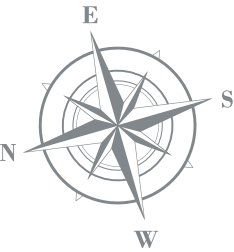


Kitchen/Living/ Dining Room	7.10m x 3.37m	23'4" x 11'1"
Bedroom 1	4.80m x 2.93m	15'9" x 9'7"
Bedroom 2	3.81m x 3.20m	12'6" x 10'6"
Total area	70.6 sq.m.	760 sq.ft.

HARP LODGE

TYPE H-11

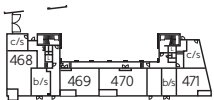
Two Bedroom Apartment
Plot 497



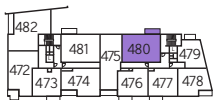
Kitchen/Living/ Dining Room	6.22m x 4.40m	20'5" x 14'5"
Bedroom 1	3.78m x 2.83m	12'5" x 9'3"
Bedroom 2	4.93m x 2.65m	16'2" x 8'8"
Total area	74.7 sq.m.	804 sq.ft.

W Fitted Wardrobe c/s Cycle Store b/s Bin Store L Lift ► Indicates where dimensions are taken from

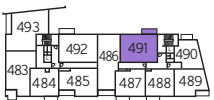
Some items shown in this key may be subject to change, and positions could vary from those indicated on this floorplan. Please refer to Sales Advisor for details of your selected plot. External finishes and landscaping may vary. Please refer to Sales Advisor for further details. All dimensions are approximate and should not be used for carpet sizes, appliance spaces or furniture. Furniture not to scale and all positions are indicative. **Kitchen layouts are subject to change.** We operate a policy of continuous improvement and individual features such as kitchen and bathroom layouts, doors, windows, garages and elevational treatments may vary from time to time. Consequently these particulars should be treated as general guidance only and do not constitute a contract, part of a contract or a warranty. Types H-08 and H-11.



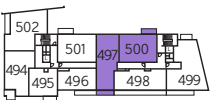
Ground Floor



First Floor



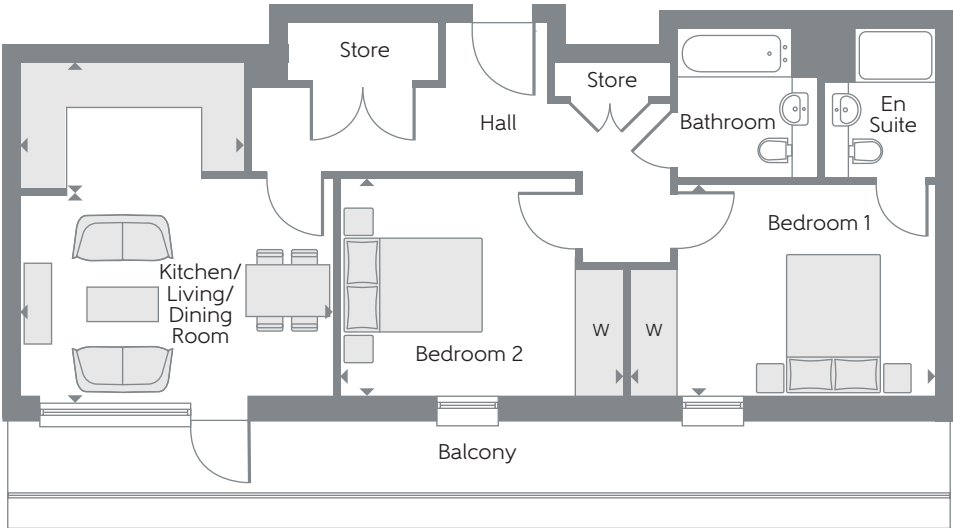
Second Floor



Third Floor

HARP LODGE

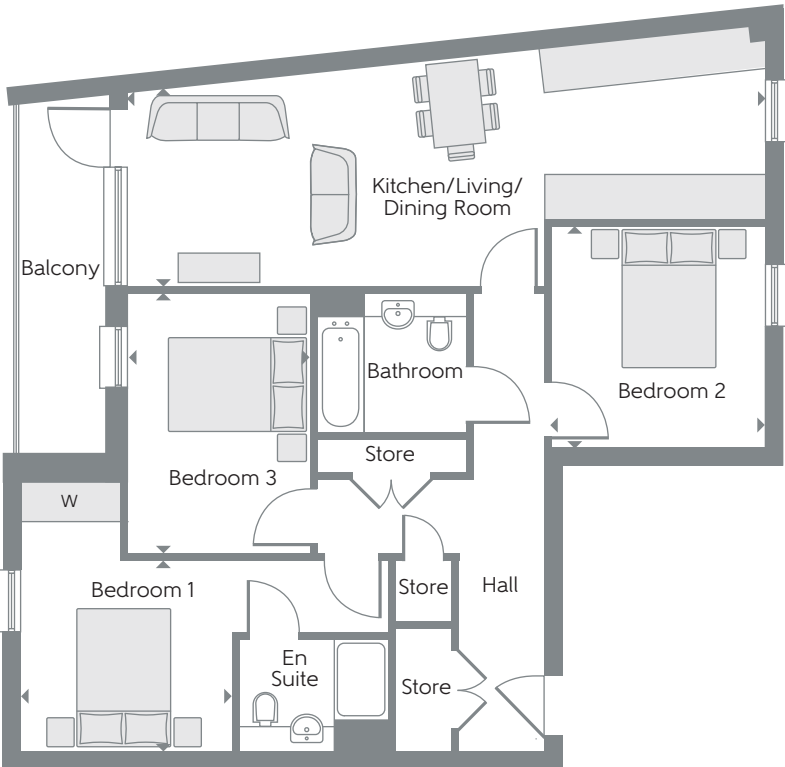
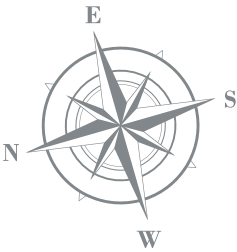
TYPE H-12
Two Bedroom Apartment
Plot 498



Kitchen	3.29m x 1.85m	10'10" x 6'1"
Living/Dining Room	4.59m x 3.14m	15'1" x 10'4"
Bedroom 1	4.50m x 3.05m	14'9" x 10'0"
Bedroom 2	4.17m x 3.14m	13'8" x 10'4"
Total area	70.2 sq.m.	756 sq.ft.

HARP LODGE

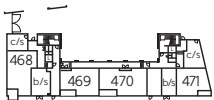
TYPE H-09
Three Bedroom Apartment
Plots 482, 493 & 502



Kitchen/Living/ Dining Room	9.39m x 2.87m	30'10" x 9'5"
Bedroom 1	3.11m x 2.80m	10'2" x 9'2"
Bedroom 2	3.25m x 3.17m	10'8" x 10'5"
Bedroom 3	3.85m x 2.68m	12'8" x 8'10"
Total area	88.5 sq.m.	953 sq.ft.

W Fitted Wardrobe c/s Cycle Store b/s Bin Store L Lift ► Indicates where dimensions are taken from

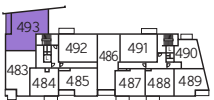
Some items shown in this key may be subject to change, and positions could vary from those indicated on this floorplan. Please refer to Sales Advisor for details of your selected plot. External finishes and landscaping may vary. Please refer to Sales Advisor for further details. All dimensions are approximate and should not be used for carpet sizes, appliance spaces or furniture. Furniture not to scale and all positions are indicative. **Kitchen layouts are subject to change.** We operate a policy of continuous improvement and individual features such as kitchen and bathroom layouts, doors, windows, garages and elevational treatments may vary from time to time. Consequently these particulars should be treated as general guidance only and do not constitute a contract, part of a contract or a warranty. Types H-12 and H-09.



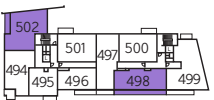
Ground Floor



First Floor



Second Floor

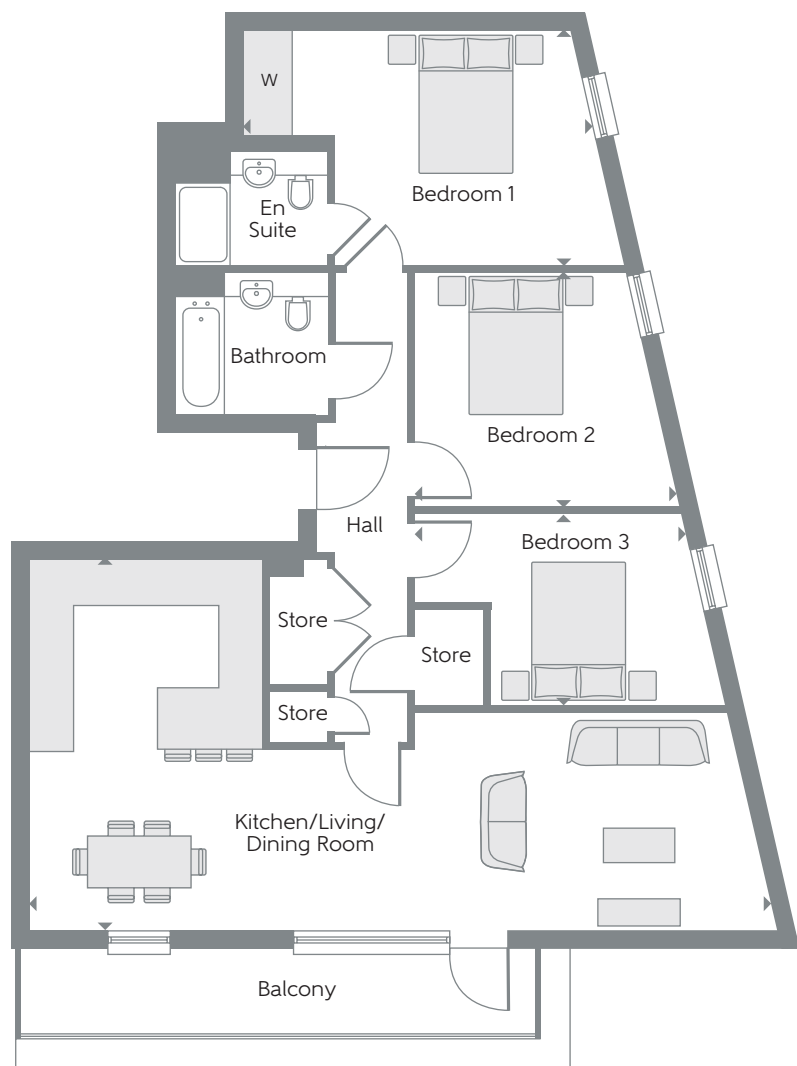
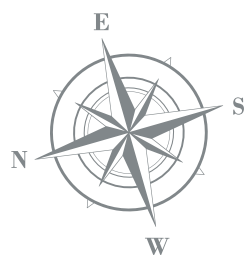


Third Floor

HARP LODGE

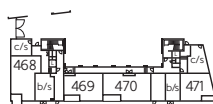
TYPE H-13

Three Bedroom Apartment
Plot 499

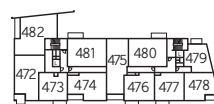


Kitchen/Living/ Dining Room	10.68m x 5.35m	35'0" x 17'6"
Bedroom 1	5.02m x 3.38m	16'6" x 11'1"
Bedroom 2	3.84m x 3.38m	12'7" x 11'1"
Bedroom 3	3.84m x 2.78m	12'7" x 9'1"

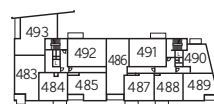
Total area 99.7 sq.m. 1073 sq.ft.



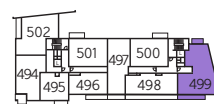
Ground Floor



First Floor



Second Floor



Third Floor

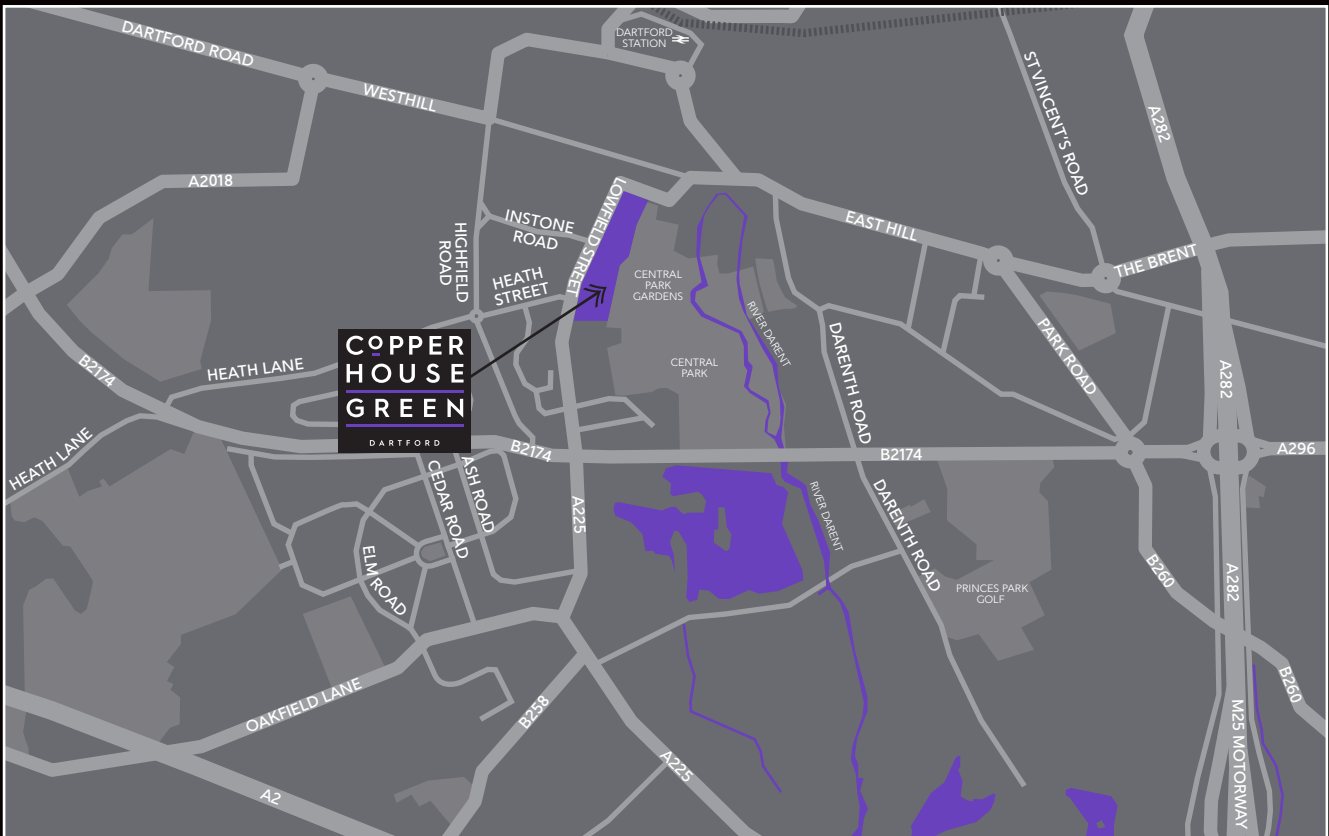
W Fitted Wardrobe c/s Cycle Store b/s Bin Store L Lift ► Indicates where dimensions are taken from

Some items shown in this key may be subject to change, and positions could vary from those indicated on this floorplan. Please refer to Sales Advisor for details of your selected plot. External finishes and landscaping may vary. Please refer to Sales Advisor for further details. All dimensions are approximate and should not be used for carpet sizes, appliance spaces or furniture. Furniture not to scale and all positions are indicative. **Kitchen layouts are subject to change.** We operate a policy of continuous improvement and individual features such as kitchen and bathroom layouts, doors, windows, garages and elevational treatments may vary from time to time. Consequently these particulars should be treated as general guidance only and do not constitute a contract, part of a contract or a warranty. Type H-13.



Show home at Copperhouse Green.

LOWFIELD STREET, DARTFORD DA1 1HJ



Map not to scale.