

COPPER HOUSE GREEN

DARTFORD

**FOUNDERS COURT NORTH
FLOOR PLANS**

APARTMENTS 277-336

COPPER HOUSE GREEN

DARTFORD

DEVELOPMENT PLAN



- Current Phase
- Future Phase
- Previous Phase
- Housing Association

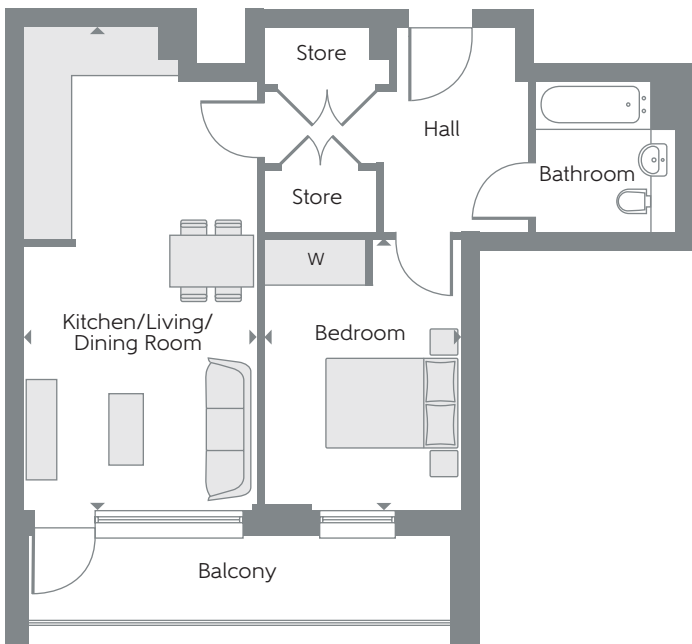
The site plan is drawn to show the relative position of individual properties. Not to scale. These are drawings and will not show land contours and gradients, boundary treatments, landscaping or local authority street lighting. Footpaths subject to change. For details of individual properties and availability please refer to our Sales Advisor. Block names are for marketing purposes only.



FOUNDERS COURT

TYPE F-01

One Bedroom Apartments
Plots 277, 286, 295, 304, 313 & 322

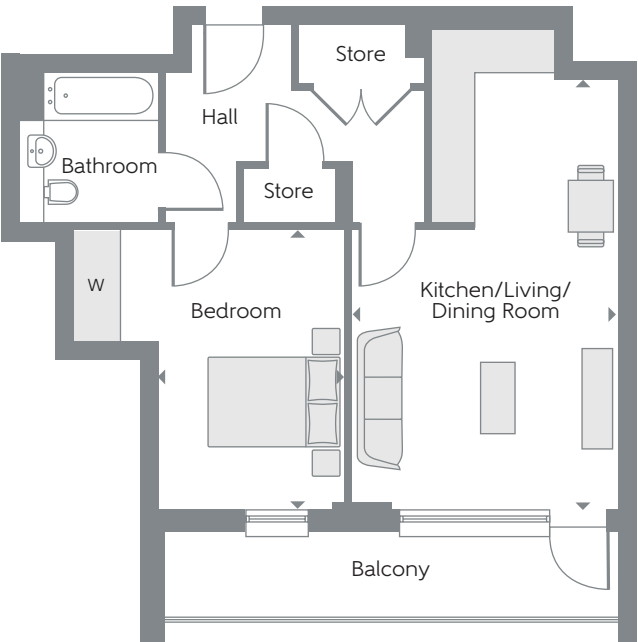
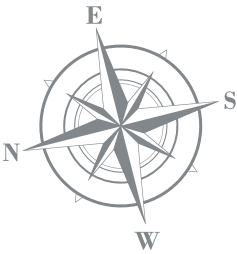


Kitchen/Living/ Dining Room	7.05m x 3.43m	23'2" x 11'3"
Bedroom	4.02m x 2.90m	13'2" x 9'6"
Total area	53.0 sq.m.	570 sq. ft.

FOUNDERS COURT

TYPE F-05

One Bedroom Apartments
Plots 285, 294, 303, 312, 321, 330 & 336

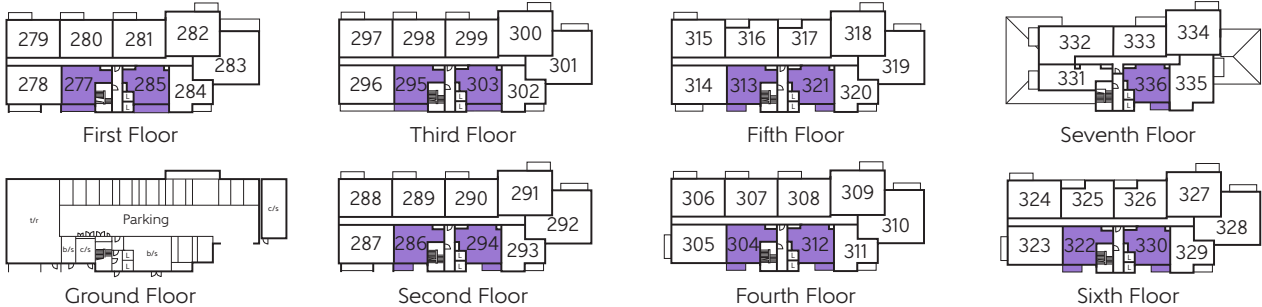


Kitchen/Living/ Dining Room	6.31m x 3.91m	20'8" x 12'10"
Bedroom	4.12m x 2.75m	13'6" x 9'0"
Total area	54.3 sq.m.	585 sq.ft.

W Fitted Wardrobe c/s Cycle Store b/s Bin Store t/r Tank Room L Lift ► Indicates where dimensions are taken from

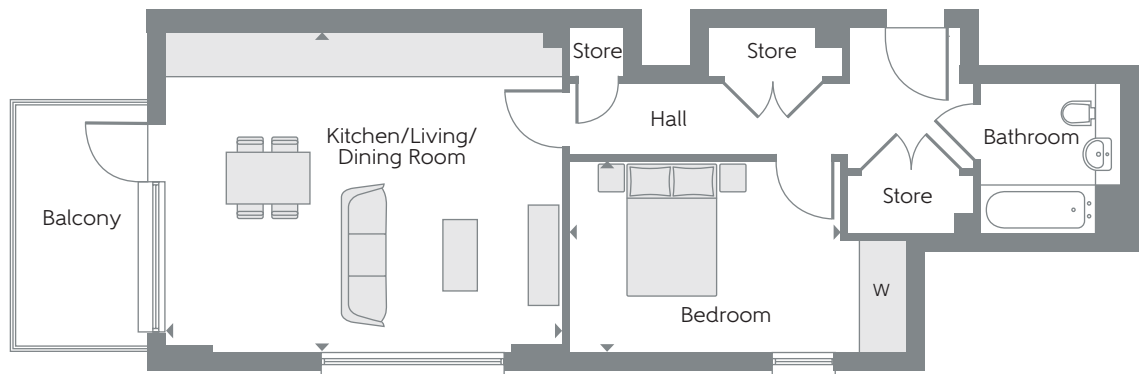
Some items shown in this key may be subject to change, and positions could vary from those indicated on this floorplan. Please refer to Sales Advisor for details of your selected plot. External finishes and landscaping may vary. Please refer to Sales Advisor for further details. All dimensions are approximate and should not be used for carpet sizes, appliance spaces or furniture. Furniture not to scale and all positions are indicative. **Kitchen layouts are subject to change.** We operate a policy of continuous improvement and individual features such as kitchen and bathroom layouts, doors, windows, garages and elevational treatments may vary from time to time. Consequently these particulars should be treated as general guidance only and do not constitute a contract, part of a contract or a warranty. Types F-01 and F-05.

▲ View towards Central Park



FOUNDERS COURT

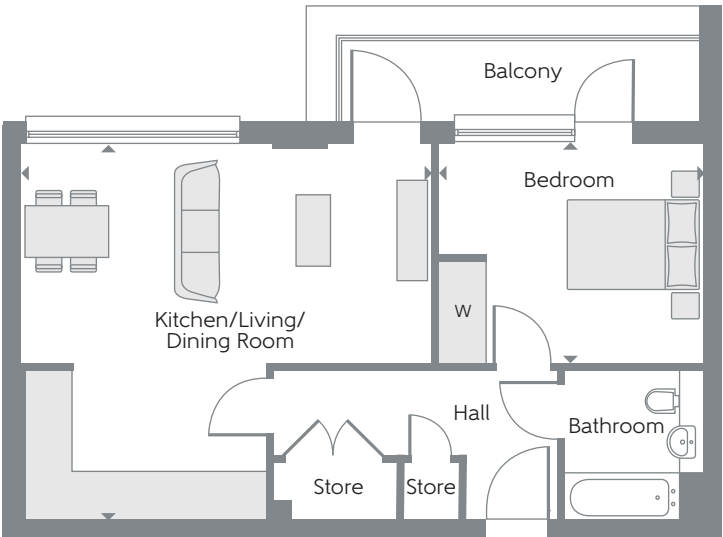
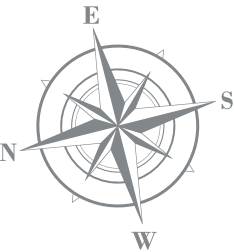
TYPE F-07
One Bedroom Apartment
Plot 331



Kitchen/Living/ Dining Room	5.86m x 4.69m	19'3" x 15'5"
Bedroom	4.00m x 2.81m	13'1" x 9'3"
Total area	58.8 sq.m.	633 sq.ft.

FOUNDERS COURT

TYPE F-09
One Bedroom Apartment
Plot 333

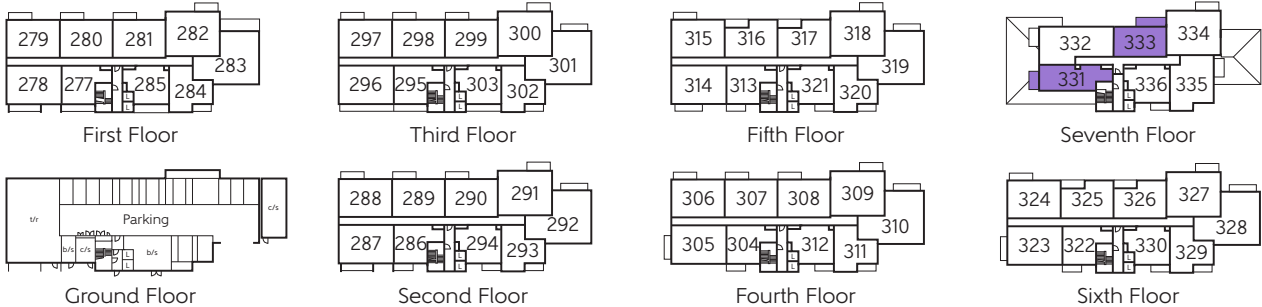


Kitchen/Living/ Dining Room	6.04m x 5.53m	19'10" x 18'2"
Bedroom	3.89m x 3.24m	12'9" x 10'8"
Total area	55.7 sq.m.	600 sq.ft.

W Fitted Wardrobe c/s Cycle Store b/s Bin Store t/r Tank Room L Lift ► Indicates where dimensions are taken from

Some items shown in this key may be subject to change, and positions could vary from those indicated on this floorplan. Please refer to Sales Advisor for details of your selected plot. External finishes and landscaping may vary. Please refer to Sales Advisor for further details. All dimensions are approximate and should not be used for carpet sizes, appliance spaces or furniture. Furniture not to scale and all positions are indicative. **Kitchen layouts are subject to change.** We operate a policy of continuous improvement and individual features such as kitchen and bathroom layouts, doors, windows, garages and elevational treatments may vary from time to time. Consequently these particulars should be treated as general guidance only and do not constitute a contract, part of a contract or a warranty. Types F-07 and F-09.

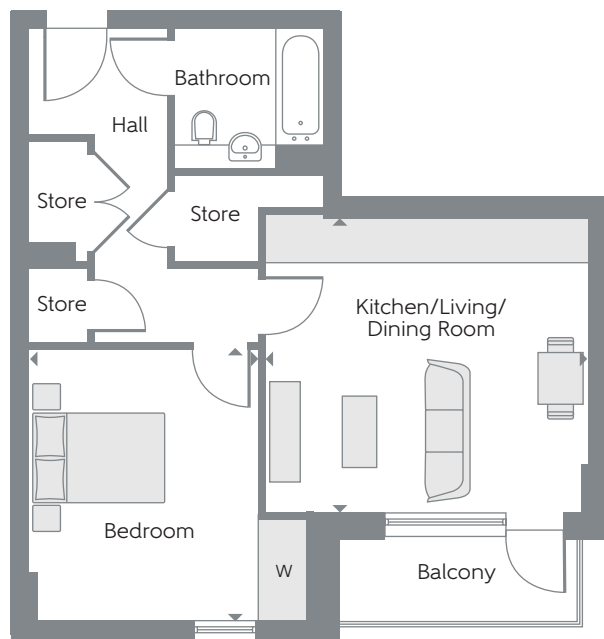
▲ View towards Central Park



FOUNDERS COURT

TYPE F1-11

One Bedroom Apartments
Plots 284, 293, 302, 311, 320, & 329

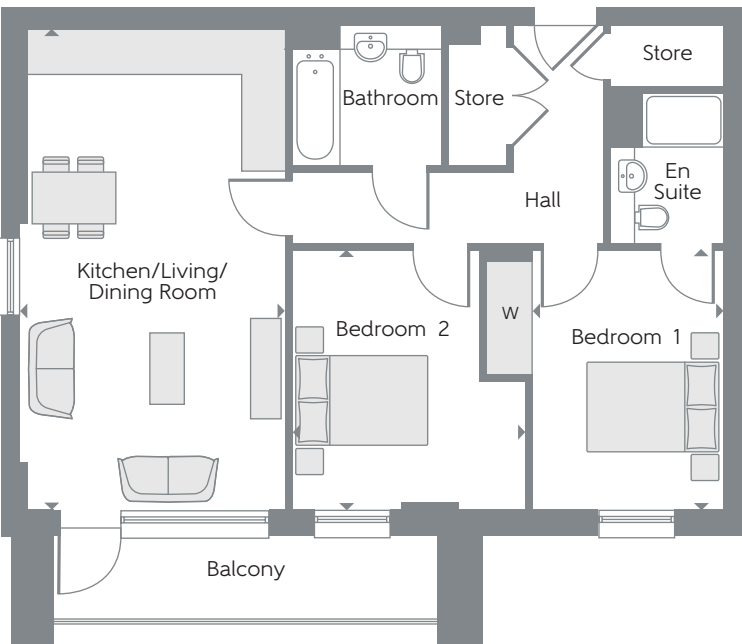
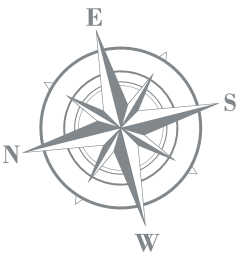


Kitchen/Living/ Dining Room	4.76m x 4.33m	15'7" x 14'2"
Bedroom	3.98m x 3.36m	13'1" x 11'0"
Total area	54.7 sq.m.	589 sq.ft.

FOUNDERS COURT

TYPE F-02

Two Bedroom Apartments
Plots 278, 287, 296, 305, 314 & 323

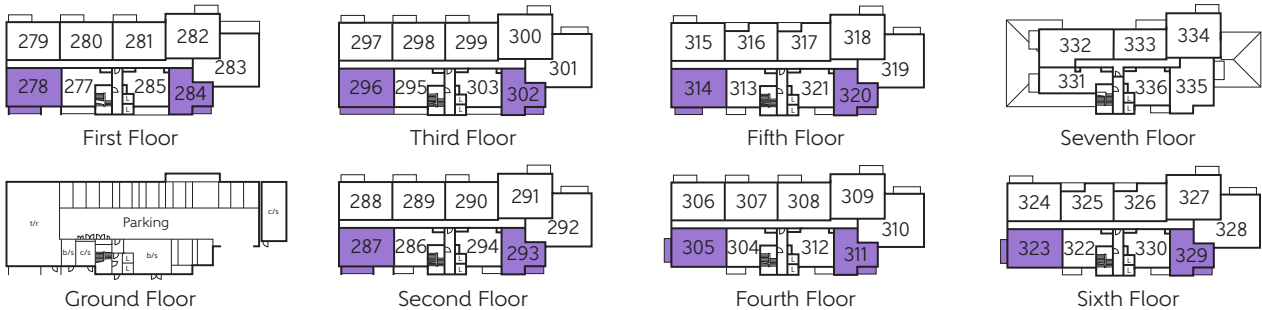


Kitchen/Living/ Dining Room	7.05m x 3.91m	23'2" x 12'10"
Bedroom 1	3.82m x 2.80m	12'6" x 9'2"
Bedroom 2	3.82m x 3.45m	12'6" x 11'4"
Total area	73.8 sq.m.	794 sq.ft.

W Fitted Wardrobe c/s Cycle Store b/s Bin Store t/r Tank Room L Lift ► Indicates where dimensions are taken from

Some items shown in this key may be subject to change, and positions could vary from those indicated on this floorplan. Please refer to Sales Advisor for details of your selected plot. External finishes and landscaping may vary. Please refer to Sales Advisor for further details. All dimensions are approximate and should not be used for carpet sizes, appliance spaces or furniture. Furniture not to scale and all positions are indicative. **Kitchen layouts are subject to change.** We operate a policy of continuous improvement and individual features such as kitchen and bathroom layouts, doors, windows, garages and elevational treatments may vary from time to time. Consequently these particulars should be treated as general guidance only and do not constitute a contract, part of a contract or a warranty. Types F1-11 and F-02.

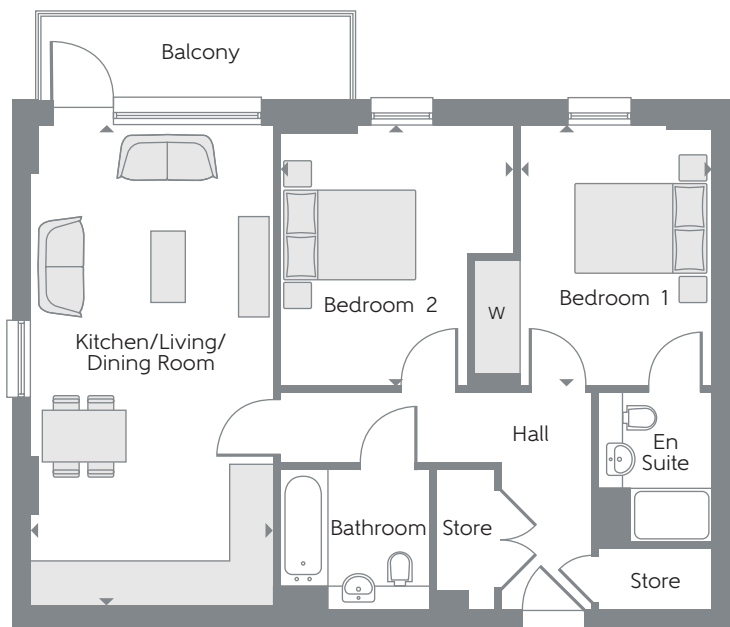
▲ View towards Central Park



FOUNDERS COURT

TYPE F-03

Two Bedroom Apartments
Plots 279, 280, 281, 288, 289, 290, 297,
298, 299, 306, 307, 308, 315 & 324



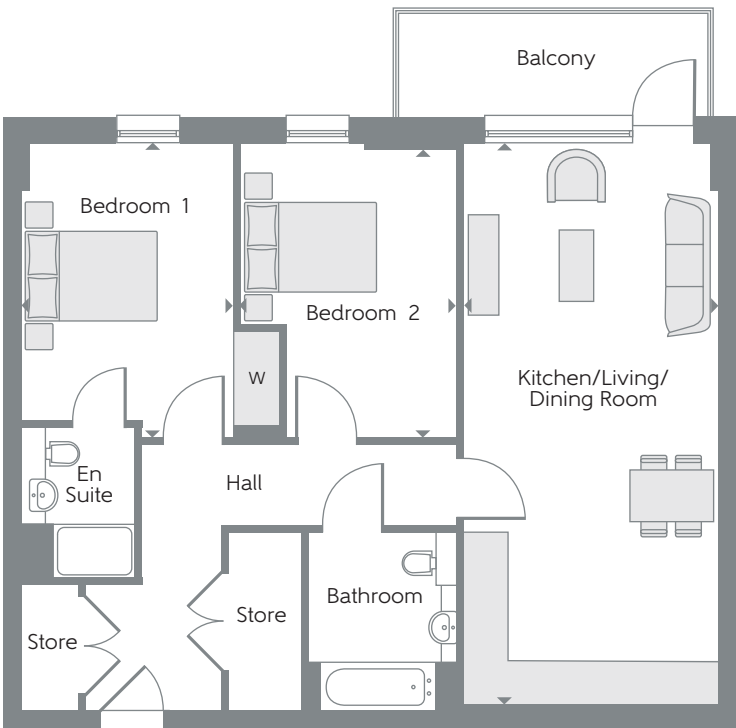
Kitchen/Living/ Dining Room	7.05m x 3.58m	23'2" x 11'9"
Bedroom 1	3.82m x 2.80m	12'6" x 9'2"
Bedroom 2	3.82m x 3.45m	12'6" x 11'4"
Total area	71.7 sq.m.	772 sq.ft.

FOUNDERS COURT

TYPE F-04 (Wheelchair Adaptable)*

Two Bedroom Apartments
Plots 282, 291, 300, 309, 318, 327 & 334

*These apartments offer step free access with wider doors and corridors plus sockets set at a higher level (1m).

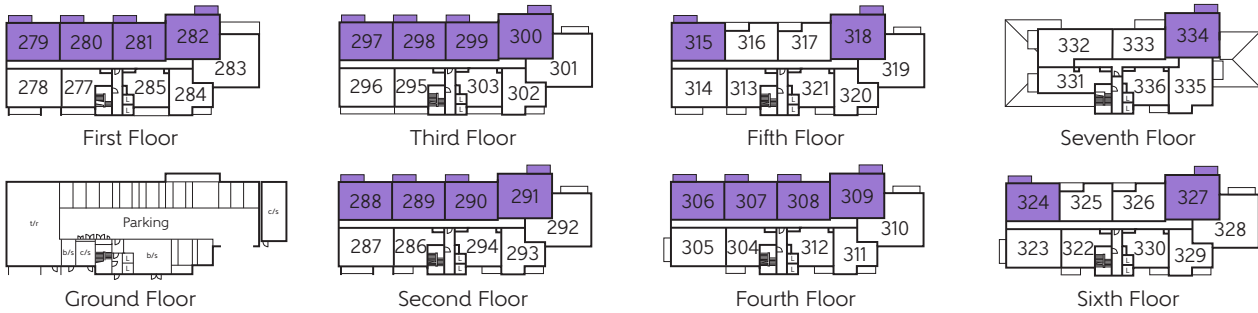


Kitchen/Living/ Dining Room	8.26m x 3.75m	27'1" x 12'4"
Bedroom 1	4.33m x 3.10m	14'2" x 10'2"
Bedroom 2	4.33m x 3.20m	14'2" x 10'6"
Total area	85.7 sq.m.	922 sq.ft.

W Fitted Wardrobe c/s Cycle Store b/s Bin Store t/r Tank Room L Lift ► Indicates where dimensions are taken from

Some items shown in this key may be subject to change, and positions could vary from those indicated on this floorplan. Please refer to Sales Advisor for details of your selected plot. External finishes and landscaping may vary. Please refer to Sales Advisor for further details. All dimensions are approximate and should not be used for carpet sizes, appliance spaces or furniture. Furniture not to scale and all positions are indicative. **Kitchen layouts are subject to change.** We operate a policy of continuous improvement and individual features such as kitchen and bathroom layouts, doors, windows, garages and elevational treatments may vary from time to time. Consequently these particulars should be treated as general guidance only and do not constitute a contract, part of a contract or a warranty. Types F-03 and F-04.

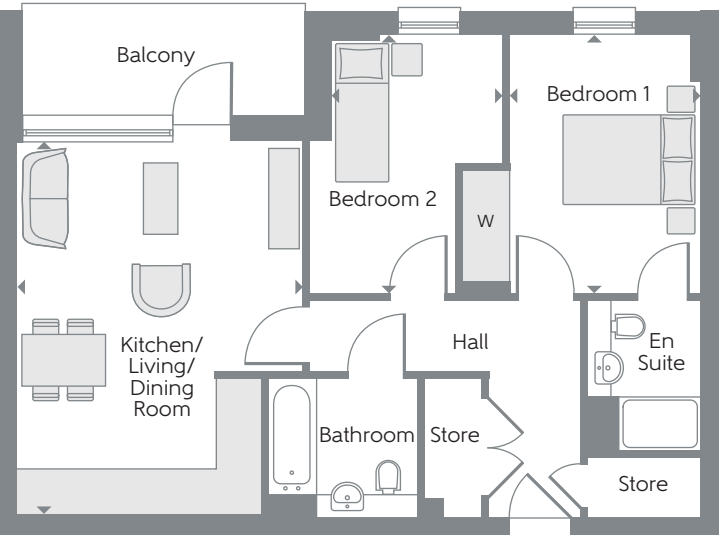
▲ View towards Central Park



FOUNDERS COURT

TYPE F-06

Two Bedroom Apartments
Plots 316, 317, 325 & 326



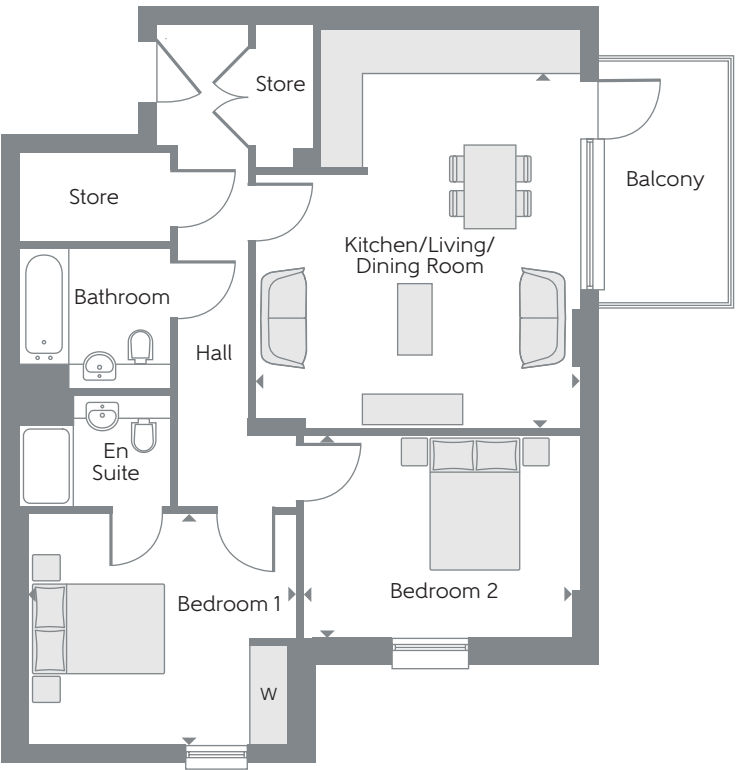
Column in this location for plots 316 & 325 only

Kitchen/Living/Dining Room	5.54m x 4.19m	18'2" x 13'9"
Bedroom 1	3.82m x 2.80m	12'6" x 9'2"
Bedroom 2	3.82m x 2.51m	12'6" x 8'3"
Total area	64.6 sq.m.	696 sq.ft.

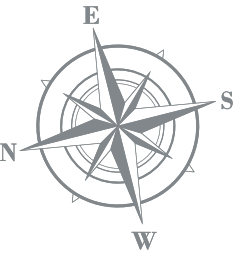
FOUNDERS COURT

TYPE F1-12

Two Bedroom Apartment
Plot 335



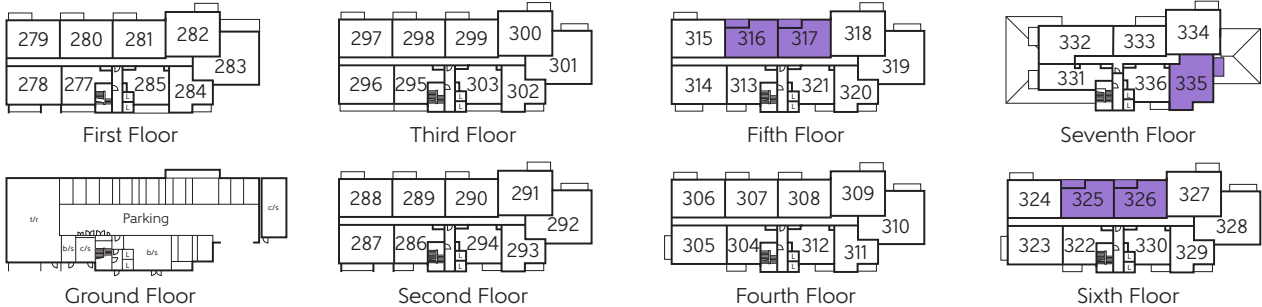
Kitchen/Living/Dining Room	5.23m x 4.77m	17'2" x 15'8"
Bedroom 1	3.95m x 3.40m	13'0" x 11'2"
Bedroom 2	4.06m x 2.97m	13'4" x 9'9"
Total area	77.2 sq.m.	831 sq.ft.



W Fitted Wardrobe c/s Cycle Store b/s Bin Store t/r Tank Room L Lift ► Indicates where dimensions are taken from

Some items shown in this key may be subject to change, and positions could vary from those indicated on this floorplan. Please refer to Sales Advisor for details of your selected plot. External finishes and landscaping may vary. Please refer to Sales Advisor for further details. All dimensions are approximate and should not be used for carpet sizes, appliance spaces or furniture. Furniture not to scale and all positions are indicative. **Kitchen layouts are subject to change.** We operate a policy of continuous improvement and individual features such as kitchen and bathroom layouts, doors, windows, garages and elevational treatments may vary from time to time. Consequently these particulars should be treated as general guidance only and do not constitute a contract, part of a contract or a warranty. Types F-06 and F1-12.

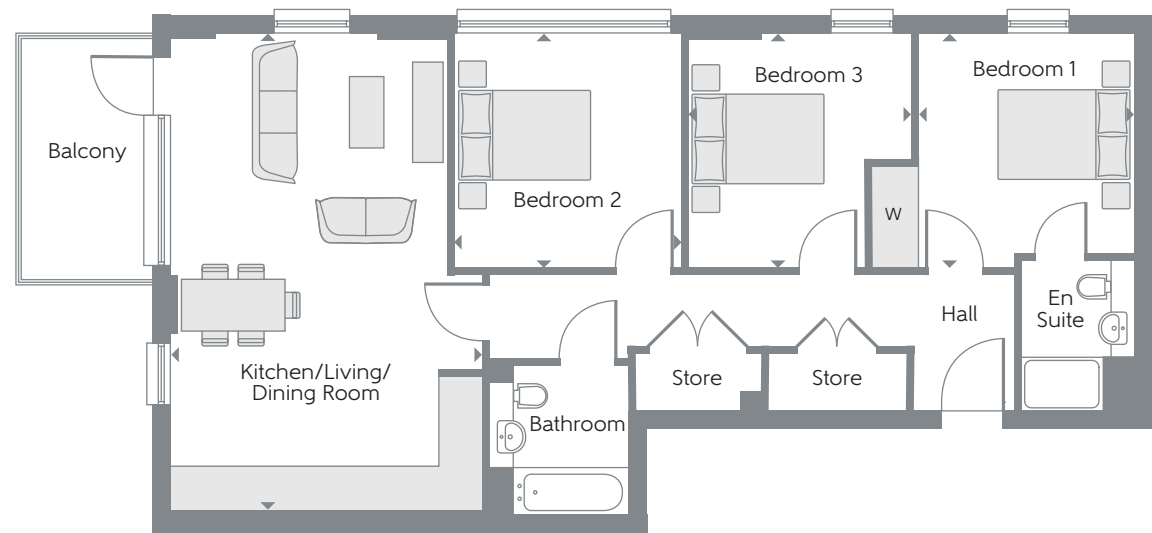
▲ View towards Central Park



FOUNDERS COURT

TYPE F-08

Three Bedroom Apartment
Plot 332

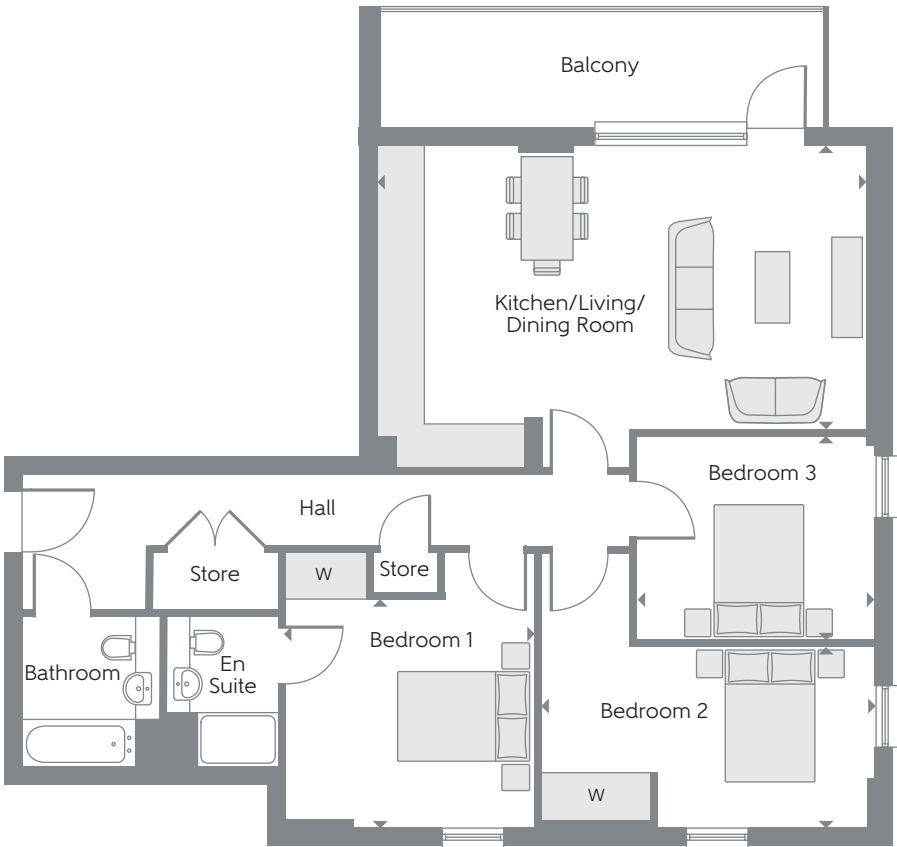
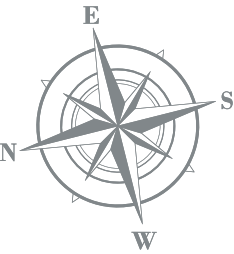


Kitchen/Living/ Dining Room	7.07m x 4.61m	23'2" x 15'1"
Bedroom 1	3.45m x 3.16m	11'4" x 10'4"
Bedroom 2	3.45m x 3.35m	11'4" x 11'0"
Bedroom 3	3.45m x 3.30m	11'4" x 10'10"
Total area	88.4 sq.m.	952 sq.ft.

FOUNDERS COURT

TYPE F1-10

Three Bedroom Apartments
Plots 283, 292, 301, 310, 319 & 328

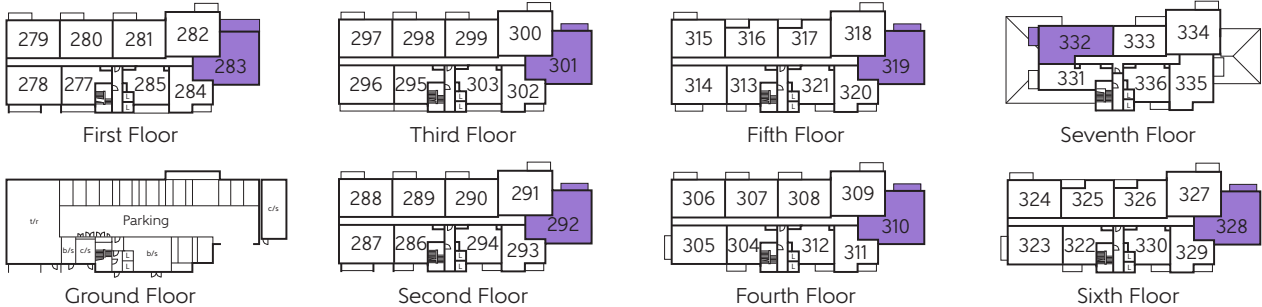


Kitchen/Living/ Dining Room	7.20m x 4.17m	23'7" x 13'8"
Bedroom 1	3.68m x 3.34m	12'1" x 10'11"
Bedroom 2	4.90m x 2.65m	16'1" x 8'8"
Bedroom 3	3.50m x 3.00m	11'6" x 9'10"
Total area	96.6 sq.m.	1040 sq.ft.

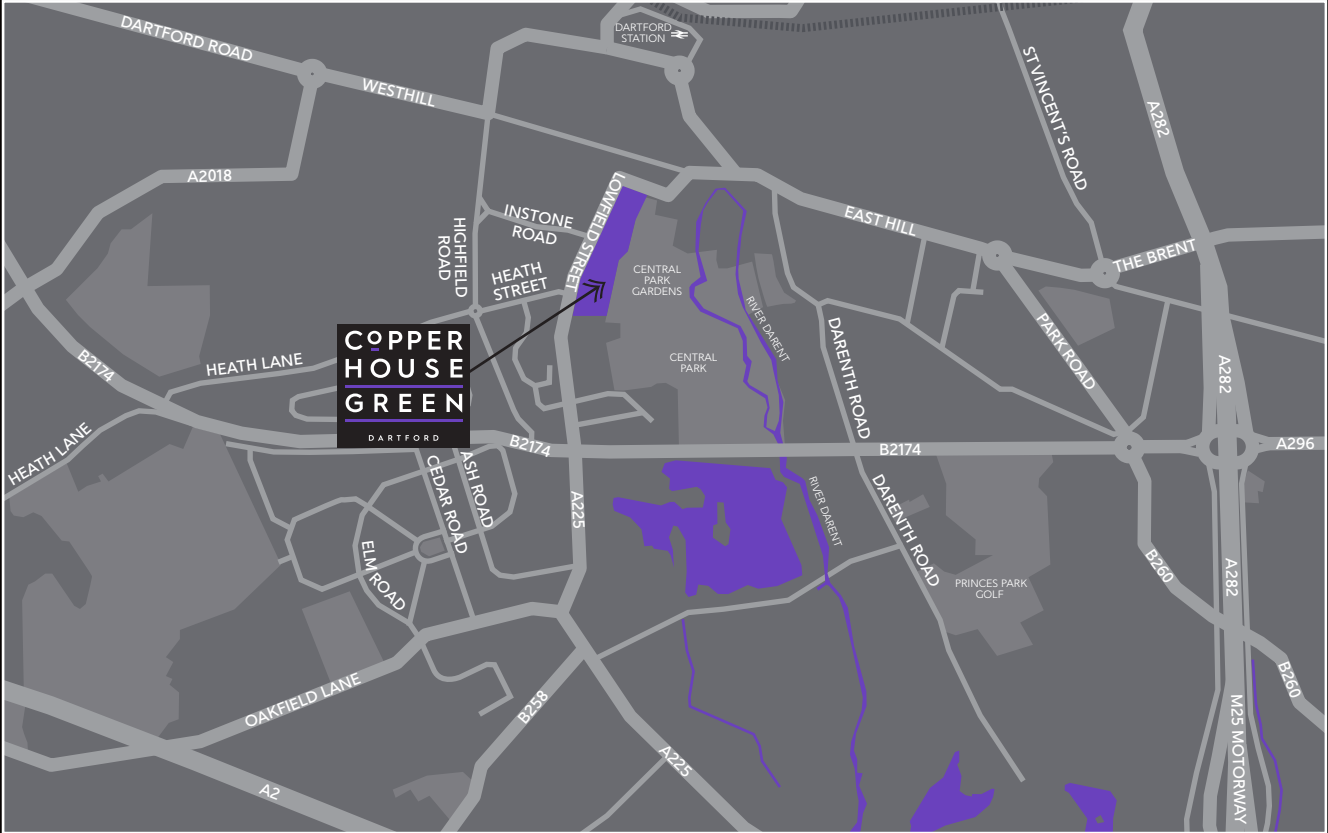
W Fitted Wardrobe c/s Cycle Store b/s Bin Store /r Tank Room L Lift ► Indicates where dimensions are taken from

Some items shown in this key may be subject to change, and positions could vary from those indicated on this floorplan. Please refer to Sales Advisor for details of your selected plot. External finishes and landscaping may vary. Please refer to Sales Advisor for further details. All dimensions are approximate and should not be used for carpet sizes, appliance spaces or furniture. Furniture not to scale and all positions are indicative. **Kitchen layouts are subject to change.** We operate a policy of continuous improvement and individual features such as kitchen and bathroom layouts, doors, windows, garages and elevational treatments may vary from time to time. Consequently these particulars should be treated as general guidance only and do not constitute a contract, part of a contract or a warranty. Types F-08 and F1-10.

▲ View towards Central Park



LOWFIELD STREET, DARTFORD DA1 1HJ



Map not to scale.