

# LEGACY WHARF

STRATFORD

# LEGACY WHARF

STRATFORD

FOLLOWING A SELL-OUT FIRST PHASE, LEGACY WHARF IS NOW INTRODUCING PHASE TWO, A FRESH NEW COLLECTION OF CONTEMPORARY ONE, TWO AND THREE BEDROOM APARTMENTS AND MAISONNETTES AT THE HEART OF STRATFORD'S CONTINUING RENAISSANCE.

## CONTENTS

INTRODUCTION	2
LOCATION	4
TRAVEL CONNECTIONS	14
YOUR NEW HOME	16
THE PLANS	26
ABOUT BELLWAY	80
CONTACTS AND MAP	86



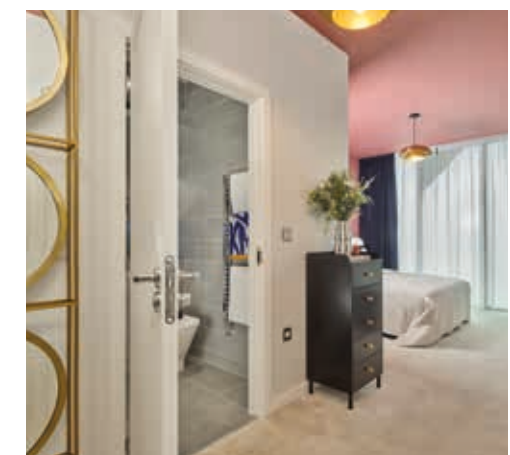
# LONDON LIVING BELLWAY STYLE



Computer generated image of Legacy Wharf Phase 2 and previous show apartment photography.



Legacy Wharf offers modern London living in the heart of dynamic Stratford, an area of London that keeps raising the bar for culture, connectivity and innovation. Whether taking your first steps on the property ladder, looking to spread out or in search of a less-stressful commute, you'll find the perfect home here. With world-class shopping, sprawling parkland and the buzz of central London minutes away, there's something for every lifestyle.





# UNRIVALLED LOCATION



HACKNEY MARSHES  
HACKNEY WICK STATION

LONDON STADIUM

LEE VALLEY VELOPARK

QUEEN ELIZABETH OLYMPIC PARK

ARCELORMITTAL ORBIT

AQUATICS CENTRE

UCL EAST CAMPUS

WESTFIELD

STRATFORD TOWN CENTRE LINK

STRATFORD STATION

FUTURE DEVELOPMENT  
BY OTHERS

UCL EAST

PUDDING MILL  
LANE DLR STATION

ABBA ARENA

PUDDING MILL  
ALLOTMENTS

BOW BACK RIVERS

HIGH STREET

FUTURE  
DEVELOPMENT  
BY BELLWAY

FUTURE  
DEVELOPMENT  
BY OTHERS

A12

**LEGACY  
WHARF**  
(PHASE TWO)

**LEGACY  
WHARF**  
(PHASE ONE COMPLETED)

CANARY WHARF AND THE CITY

Aerial photograph.



# DISCOVER STRATFORD

WHERE REMARKABLE HISTORY  
MEETS AN EXCITING FUTURE

Once a riverside farming hamlet, Stratford is now at the sharp end of 21st-century London. Queen Elizabeth Olympic Park has evolved from a venue for London 2012 into a hotbed of culture, with endless fun, entertainment and creativity to enjoy.

East Bank's new V&A East Storehouse and Sadler's Wells East draw design lovers and dance fans alike, while the ABBA Arena's digital concert keeps nightlife buzzing seven nights a week.

Retail therapy is equally remarkable. Westfield Stratford City plays home to endless brands, restaurants and leisure options. Most recently it has welcomed exciting flagships like Sephora's second UK store, H&M's smart-fitting-room concept and JD Sports' 29,000 sq ft megastore. You can also now find experiential gems such as Puttshack's tech-mini-golf, while City Bouldering's climbing gym remains a firm favourite.

Despite such cutting-edge development, the area still feels unmistakably East End. Indie cafés line East Village; canalside bars like Barge East and Grow host live DJs; and creative studios are abundant throughout nearby Hackney Wick.

Add transport links such as the Elizabeth line, DLR and Overground on your doorstep, and the whole capital is an easy train ride away. With all this and more, it's no wonder the district now welcomes millions of visitors a year.



## OLYMPIC PARK

Top-flight sporting venues nestle among hundreds of acres of parkland, waterways and playgrounds at this sprawling destination. Alongside London Stadium and the London Aquatics Centre you'll now find East Bank's cultural quarter, while the ArcelorMittal Orbit plays home to the world's tallest and longest tunnel slide for high-adrenaline fun.



## WESTFIELD

At Westfield, you'll find refined luxury brands like Tiffany, Jimmy Choo and Versace alongside a stadium concept stores from Adidas and JD Sports, while H&M's interactive fitting rooms add a new dimension to the shopping experience. There are also many favourite high-street names such as Next, Office, Dunelm and Currys.



## ROOF EAST

London's original rooftop playground recently reopened to offer crazy golf, batting cages, disco bowls and archery, plus bottomless-brunch sessions and themed festival weekends. Add to this outdoor cinema classics, street-food and cocktails for fun all day and long into the evening.



## THE O2


From chart-topping tours in the 20,000-seat arena to tantalising restaurants and outlet shopping, The O2 packs a huge range of entertainment into one riverside dome. For extra thrills, strap yourself in and go for a roof climb – 52 metres high with 360° views.



# AN OLYMPIC LEGACY

Back in 2012, the eyes of the world were on Stratford as it hosted the 27th modern Olympic Games. Such a glittering stage required a venue to match, and so Queen Elizabeth Olympic Park was born. This state-of-the-art complex provided the sporting battleground for a huge number of events across a range of venues, including an aquatics centre, velodrome, Olympic stadium and much more.

Over a decade later and this iconic location has lost none of its appeal. Olympic Park now attracts huge numbers of visitors every year for many different reasons. With substantial investment into masses of commercial, hospitality and retail space, fantastic parkland, contemporary new homes and exceptional transport links, this popularity is set to continue long into the future.

**4**   
**MILLION**  
**SQ.FT. OF NEW**  
**OFFICE SPACE**

**11**   
**ACRE**  
**NEW CAMPUS FOR**  
**UNIVERSITY COLLEGE LONDON**

**£2.4**   
**BILLION**  
**INVESTED IN THE INTL QUARTER**  
**LONDON, A NEW BUSINESS**  
**NEIGHBOURHOOD**

 **60+**  
**MILES**  
**OF CROSSRAIL**  
**CONNECTIONS**

**5** **WORLD**   
**CLASS**  
**SPORTING VENUES**

 **35** **KM**  
**OF NEW**  
**CYCLE WAYS**  
**AND FOOTPATHS**



# ENJOY THE PARKLIFE

BREATHE THE FRESH AIR AND ESCAPE LIFE'S STRESSES IN ONE OF THE PARKS CLOSE BY



## OLYMPIC PARK

- 🚶 20 minutes on foot
- 🚲 6 minutes by bike

Built for the 2012 Summer Olympics, this 560-acre park is a large sports complex but also the perfect place for a picnic with friends, a boat tour or a gentle bike ride.



## MILE END PARK

- 🚶 30 minutes on foot
- 🚲 8 minutes by bike

Stretching from Victoria Park in the north to Limehouse in the south with a play arena, ecology park and art pavilion, it is also home to Mile End Leisure Centre gym and swimming pool.



## WEST HAM PARK

- 🚶 34 minutes on foot
- 🚲 10 minutes by bike

Take a stroll around the ornamental gardens and wildflower meadow or play a game of tennis in this well-maintained and popular park.



## VICTORIA PARK

- 🚶 36 minutes on foot
- 🚲 9 minutes by bike

Victory Park's expansive lawn in the heart of East Village hosts free outdoor fitness and community events among wildflower borders, orchard trees and children's play areas.



## WICK WOODLAND

- 🚶 38 minutes on foot
- 🚲 11 minutes by bike

Tucked alongside the Lea Navigation canal this peaceful woodland features around 60 statuesque trees which are over 100 years old.



## HACKNEY MARSHES

- 🚶 42 minutes on foot
- 🚲 13 minutes by bike

Known as the spiritual home of Sunday league football, with no less than 82 sports pitches as well as a café, conservation area and bird hide.



# CANALSIDE CHARM



## BARGE EAST

🚲 6 minutes by bike

Located on a 125-year-old Dutch barge, Barge East offers award-winning garden-to-plate menus along with chilled drinks and street food in its extensive seasonal produce gardens.



## TWO MORE YEARS

🚲 5 minutes by bike

This warehouse-style venue offers craft pints, gourmet burgers and DJ sets, all with views over the water – plus free weekday co-working and 11 affordable creative studios.



## NUMBER 90 BAR & KITCHEN

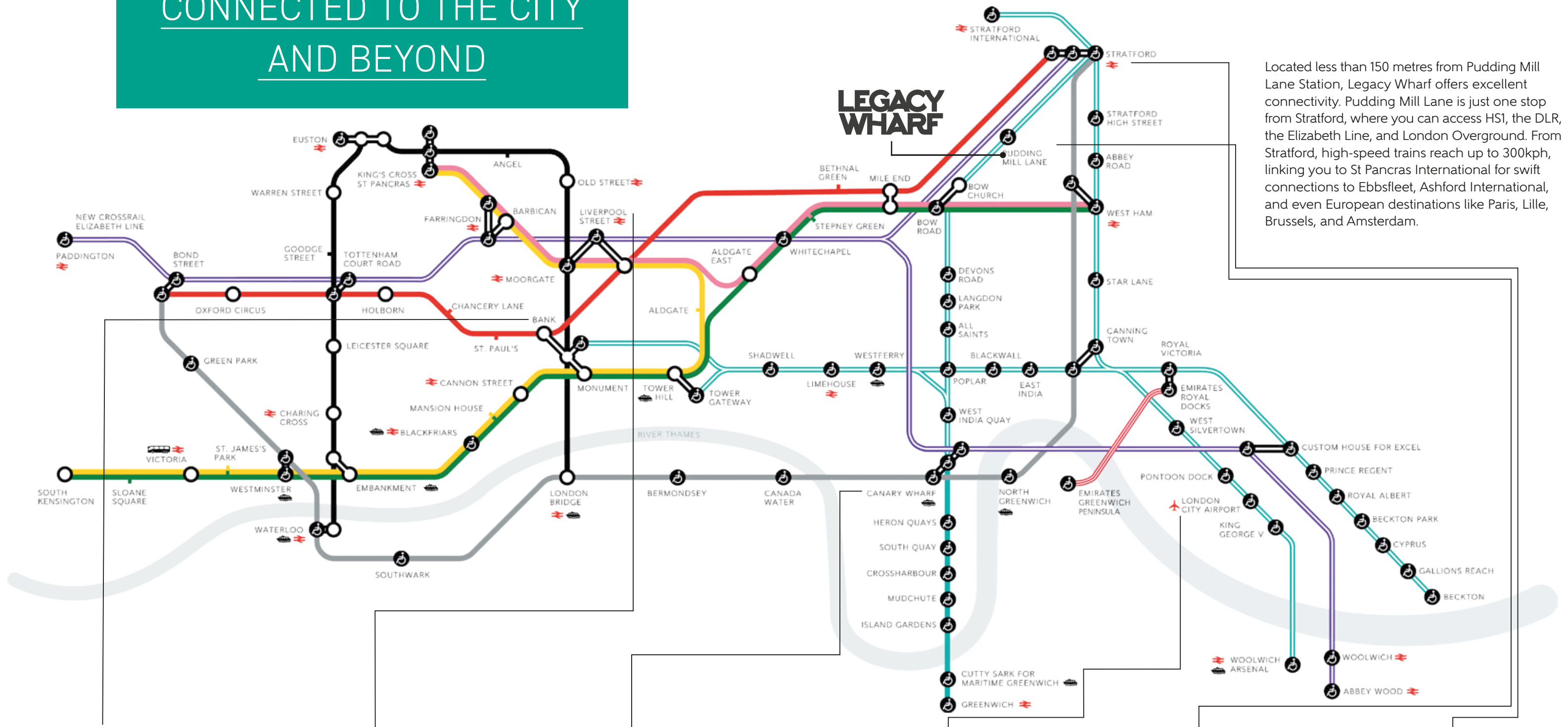
🚲 8 minutes by bike

A vibrant social spot that combines seasonal plates, creative cocktails and a long list of events including poetry, live music and lively club nights across multiple rooms.

Travel times are approximate  
only take from Google maps.



# ZONE 2 LOCATION CONNECTED TO THE CITY AND BEYOND



**BANK**  
26 minutes  
from Pudding Mill Lane DLR



**LIVERPOOL STREET**  
21 minutes  
from Pudding Mill Lane DLR



**CANARY WHARF**  
15 minutes  
from Pudding Mill Lane DLR



**CITY AIRPORT**  
25 minutes  
from Pudding Mill Lane DLR



**STRATFORD**  
2 minutes  
from Pudding Mill Lane DLR



**PUDDING MILL LANE**  
5 minutes  
Legacy Wharf is less than 150  
metres from Pudding Mill Lane DLR



# YOUR NEW HOME AWAITS

INTRODUCING OUR COLLECTION OF  
1, 2 AND 3 BEDROOM APARTMENTS  
AND MAISONNETTES



Computer generated image of Legacy Wharf.





# FIVE STAR FACILITIES

DISCOVER LUXURY LIVING AT LEGACY WHARF  
WITH A PLETHORA OF FACILITIES AT  
YOUR FINGERTIPS



## COMMUNAL GARDENS

Everyone can come together in Legacy Wharf's own communal courtyard. There's a play area for children and several meeting places to catch up with friends.



## WORK HUB

Work Hub allows residents exclusive access to a dedicated work space with WiFi, conferencing facilities, meeting space and private booths.

Computer generated image.



## SECURE CYCLE STORAGE

Travelling by bike couldn't be easier, with a secure cycle store available on the ground floor.



## RESIDENTS' GYM

Keeping fit couldn't be easier with a state-of-the-art gym available for you to use, just moments from your front door.

Computer generated image.



## CONCIERGE

On hand to take in your parcels, book your taxi, help with your bags and anything else to lend a hand.

Computer generated image.

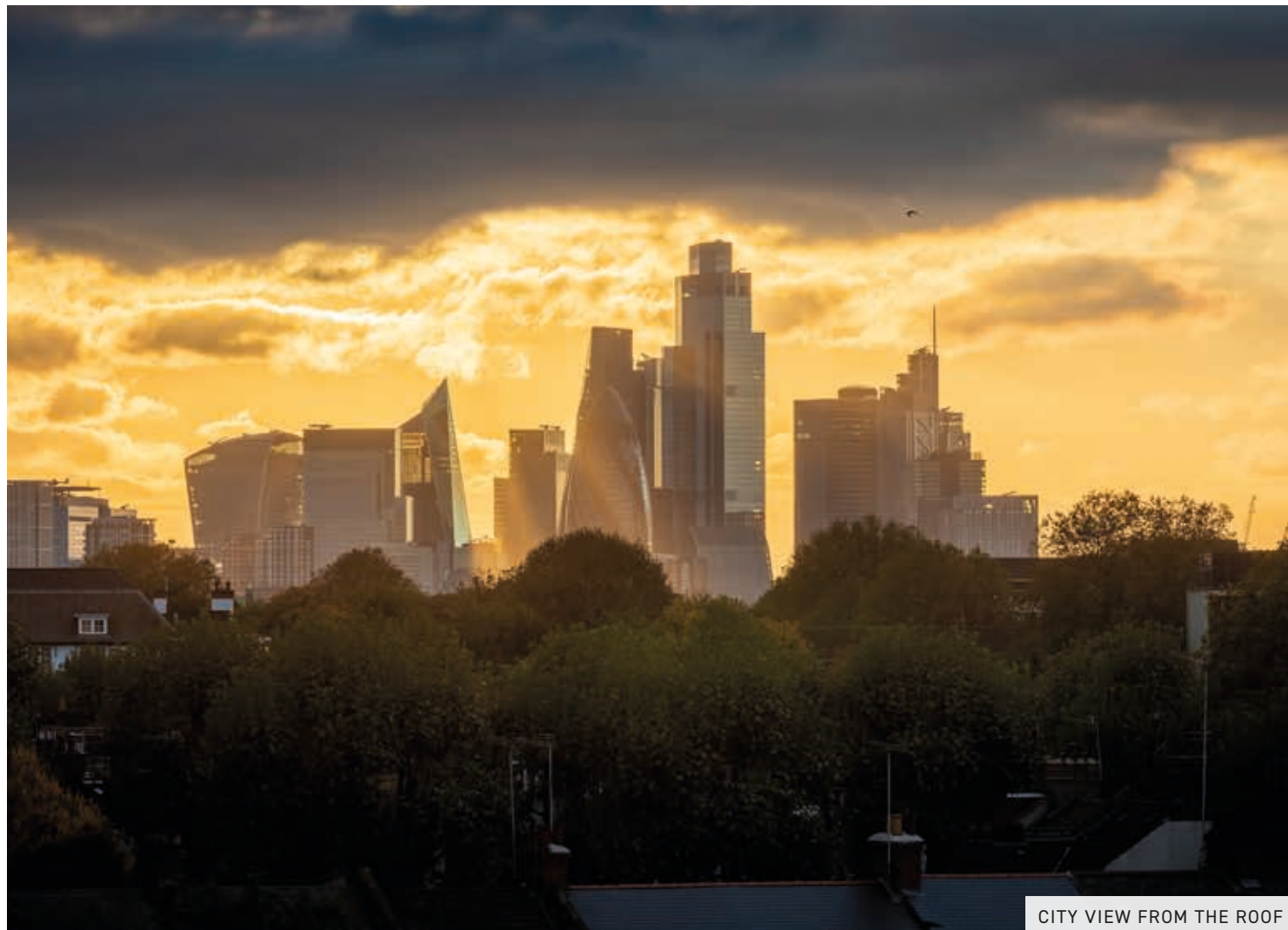


# A NEW VIEW OF LONDON

PANORAMIC VIEWS FROM LEGACY WHARF  
OVER STRATFORD AND BEYOND



CANARY WHARF VIEW FROM THE ROOF



CITY VIEW FROM THE ROOF



PLOT 346, 6<sup>TH</sup> FLOOR VIEW TOWARDS THE OLYMPIC STADIUM

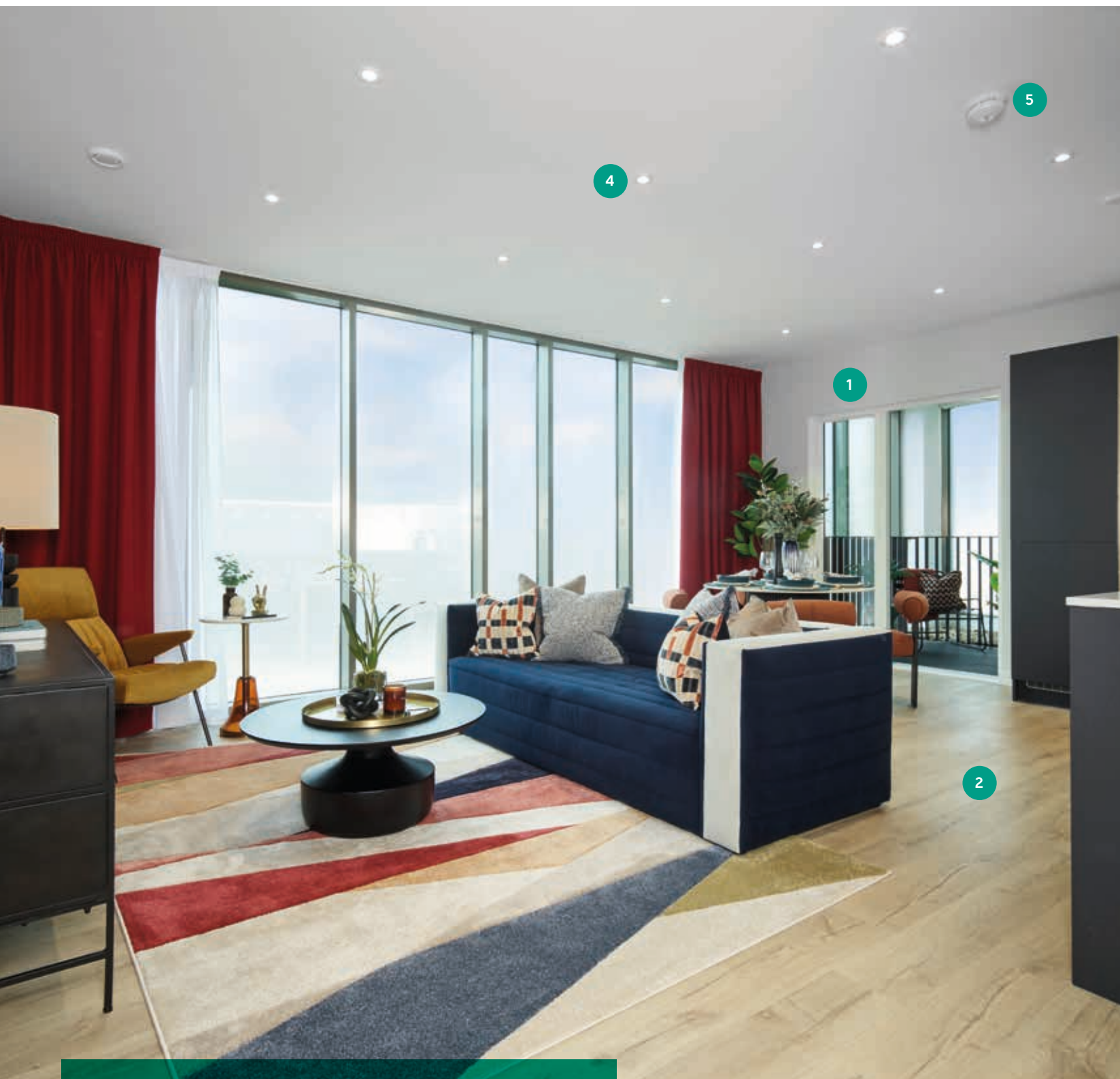


PLOT 277, 5<sup>TH</sup> FLOOR VIEW TOWARDS STRATFORD



STRATFORD VIEW FROM THE ROOFTOP





## THE LIVING SPACE

- 1 | Walls and ceiling finished in white matt emulsion
- 2 | Laminate flooring to living areas
- 3 | TV outlets with digital/freeview channels and Sky Q to living room (subject to future connection by purchaser)
- 4 | Downlights to hallway, kitchen, living and dining areas
- 5 | Mains powered smoke detector
- 6 | White vertical panel internal doors with chrome door furniture
- 7 | Video door entry system
- 8 | Heating and hot water provided by central boiler/energy centre

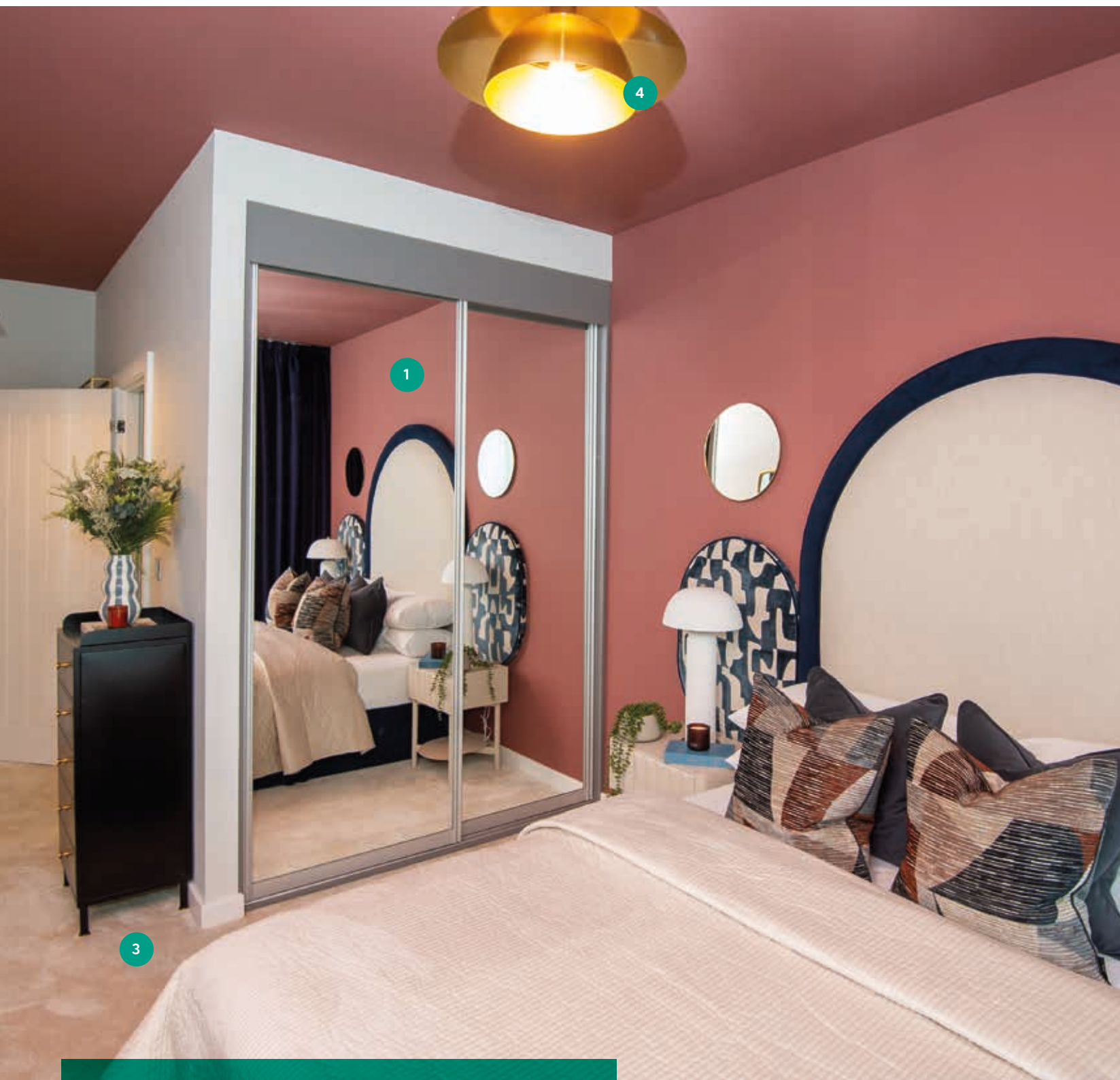


## THE KITCHEN

- 1 | Contemporary handle-less kitchen units with soft close doors and drawers
- 2 | Composite worktops with matching upstand
- 3 | Glass splashback behind hob
- 4 | Stainless steel 1.5 bowl sink with chrome mixer tap
- 5 | Single oven with ceramic four-zone hob
- 6 | Integrated stainless steel cooker hood
- 7 | Integrated A+ rated fridge freezer
- 8 | Under counter LED lighting
- 9 | Space and plumbing for a washer dryer in utility cupboard

All appliances come complete with manufacturer warranties for your peace of mind.





## THE BEDROOMS

- 1 | Fitted wardrobes to bedroom 1
- 2 | TV outlets with digital/freeview channels and Sky Q to bedroom 1 (subject to future connection by purchaser)
- 3 | Sensations carpets to bedrooms
- 4 | Energy efficient pendant lights to all bedrooms



## THE BATHROOM AND EN SUITE

- 1 | Roca white sanitaryware with chrome fittings
- 2 | Bristan chrome taps and bathroom furniture
- 3 | Bath with dual Mira thermostatic shower and glass screen to main bathroom
- 4 | Mira 'Elevate' thermostatic shower to en suites
- 5 | Amarii slot-in shelves below basin
- 6 | Mirrored bathroom cabinet with LED lighting
- 7 | Chrome towel warmers
- 8 | Walls fully tiled around the bath/shower and half tiled to remaining walls

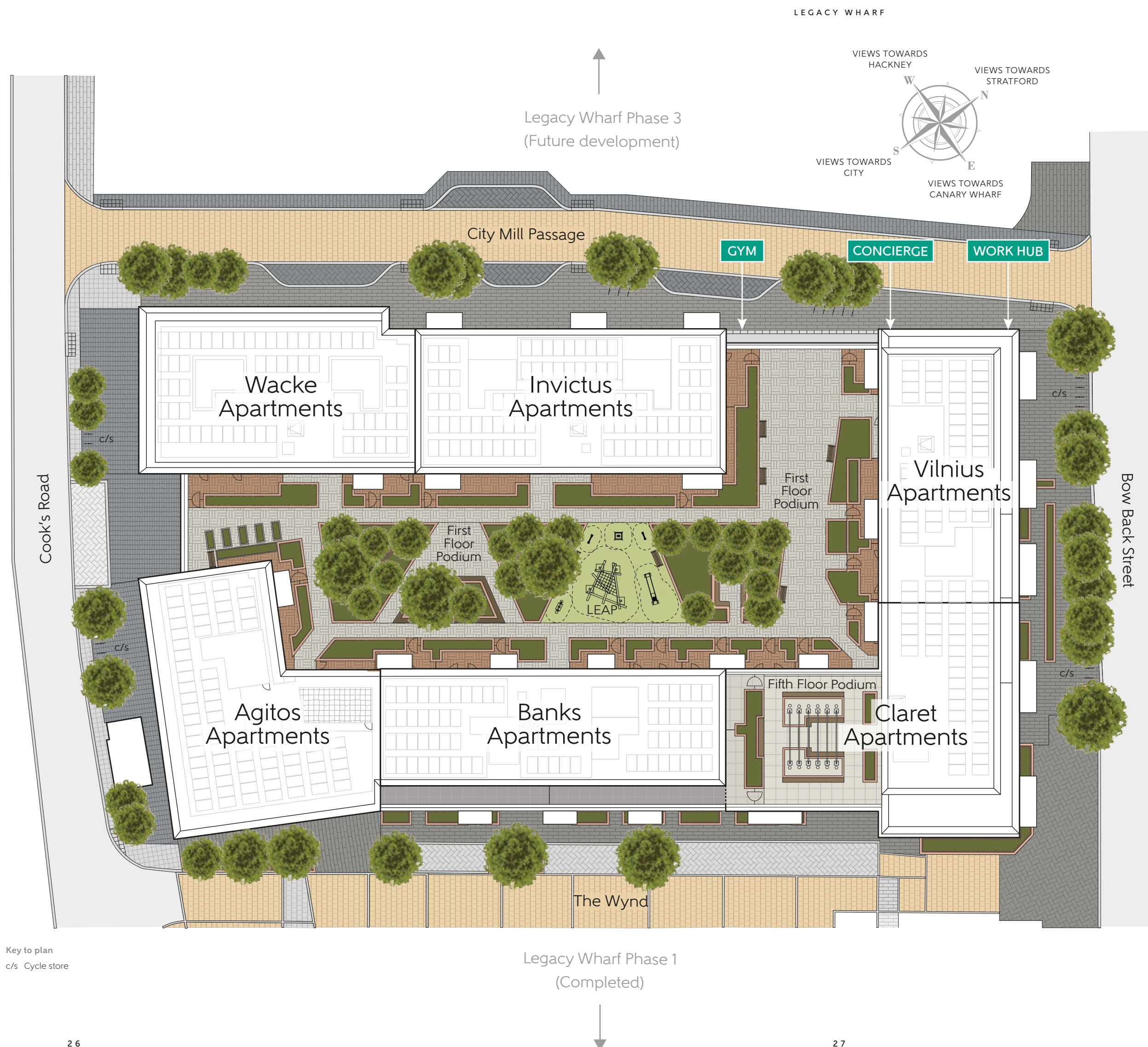


# LEGACY WHARF

STRATFORD

## DEVELOPMENT PLAN

The site plan is drawn to show the relative position of individual properties. Not to scale. These are drawings and will not show land contours and gradients, boundary treatments, landscaping or local authority street lighting. Footpaths subject to change. For details of individual properties and availability please refer to our Sales Advisor. Hard and soft landscaping is indicative only.



Key to plan  
c/s Cycle store



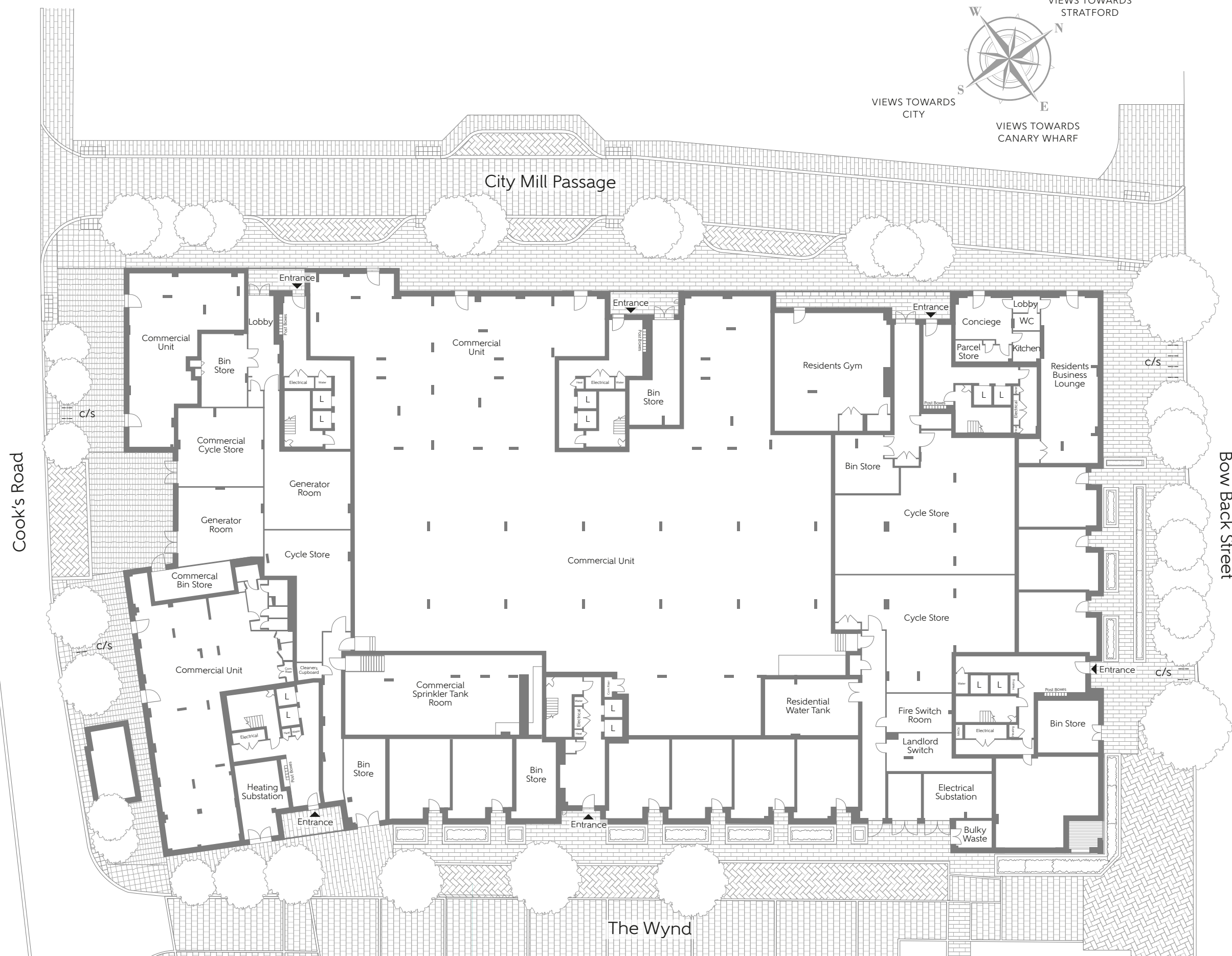
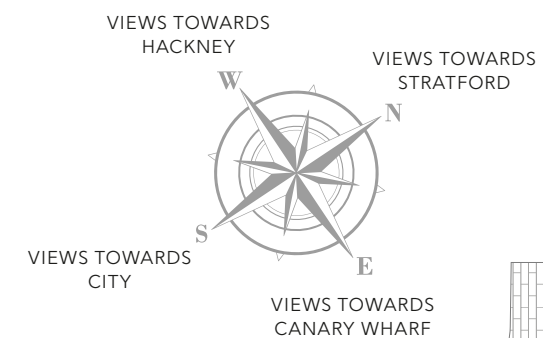
# LEGACY WHARF

STRATFORD

## PARKING PLAN

The site plan is drawn to show the relative position of individual properties. Not to scale. These are drawings and will not show land contours and gradients, boundary treatments, landscaping or local authority street lighting. Footpaths subject to change. For details of individual properties and availability please refer to our Sales Advisor. Hard and soft landscaping is indicative only.

Key to plan  
c/s Cycle store





**LEGACY  
WHARF**  
STRATFORD

AGITOS  
APARTMENTS





AGITOS APARTMENTS

First Floor

PLOT 197 TYPE LW2\_26

Kitchen	4.42m x 1.92m	14'5" x 6'4"
Living/Dining	5.20m x 3.35m	17'1" x 11'0"
Bedroom 1	2.76m x 4.46m	9'0" x 14'6"
Bedroom 2	3.15m x 3.82m	10'3" x 12'5"
Total area	76.9 sq.m.	828 sq.ft.

PLOT 198 TYPE LW1\_15

Kitchen/Living/ Dining	4.01m x 7.28m	13'2" x 23'11"
Bedroom	4.52m x 2.72m	14'8" x 8'9"
Total area	50.7 sq.m.	546 sq.ft.

PLOT 199 TYPE LW2\_25

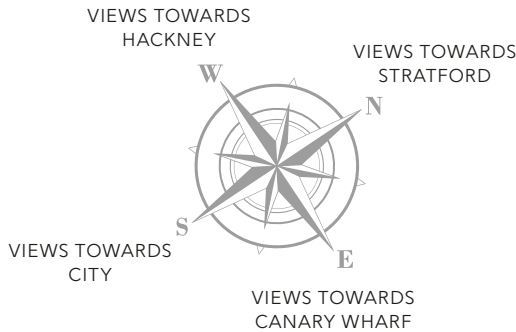
Kitchen/Dining	3.43m x 4.91m	11'2" x 16'1"
Kitchen/Living	6.74m x 2.73m	22'1" x 9'0"
Bedroom 1	3.12m x 3.45m	10'2" x 11'3"
Bedroom 2	3.35m x 3.52m	11'0" x 11'5"
Total area	70.0 sq.m.	753 sq.ft.

PLOT 200 TYPE LW2\_24

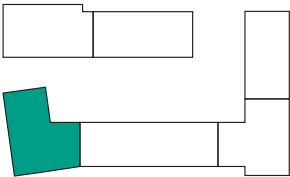
Kitchen/Dining	2.24m x 4.91m	7'3" x 16'1"
Living	4.47m x 2.78m	14'7" x 9'1"
Bedroom 1	3.05m x 3.47m	10'0" x 11'4"
Bedroom 2	3.32m x 3.45m	10'9" x 11'3"
Total area	70.3 sq.m.	757 sq.ft.

PLOT 201 TYPE LW2\_23

Kitchen/Living/ Dining	5.99m x 3.92m	19'7" x 12'9"
Bedroom 1	3.53m x 3.52m	11'6" x 11'6"
Bedroom 2	3.53m x 4.24m	11'6" x 13'11"
Total area	73.4 sq.m.	790 sq.ft.



Some items shown in this key may be subject to change, and positions could vary from those indicated on this floorplan. Please refer to Sales Advisor for details of your selected plot. External finishes, landscaping and configuration may vary from plot to plot. Please refer to Sales Advisor for further details. All dimensions are approximate and should not be used for carpet sizes, appliance spaces or furniture. Furniture not to scale and all positions are indicative. **Kitchen layouts are subject to change.** We operate a policy of continuous improvement and individual features such as kitchen and bathroom layouts, doors, windows, garages and elevational treatments may vary from time to time. Consequently these particulars should be treated as general guidance only and do not constitute a contract, part of a contract or a warranty.



- KEY**
- 1 Bedroom Apartment
  - 2 Bedroom Apartment
  - W Fitted Wardrobe



AGITOS APARTMENTS

Second - Fifth Floors

PLOTS 202, 207, 212 & 217 TYPE LW2\_26

Kitchen	4.42m x 1.92m	14'5" x 6'4"
Living/Dining	5.20m x 3.35m	17'1" x 11'0"
Bedroom 1	2.76m x 4.46m	9'0" x 14'6"
Bedroom 2	3.15m x 3.82m	10'3" x 12'5"
Total area	76.9 sq.m.	828 sq.ft.

PLOTS 203, 208, 213 & 218 TYPE LW1\_15

Kitchen/Living/ Dining	4.01m x 7.28m	13'2" x 23'11"
Bedroom	4.52m x 2.72m	14'8" x 8'9"
Total area	50.7 sq.m.	546 sq.ft.

PLOTS 204, 209, 214 & 219 TYPE LW2\_25

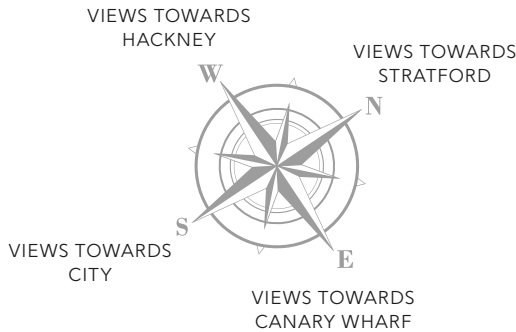
Kitchen/Dining	3.43m x 4.91m	11'2" x 16'1"
Kitchen/Living	6.74m x 2.73m	22'1" x 9'0"
Bedroom 1	3.12m x 3.45m	10'2" x 11'3"
Bedroom 2	3.35m x 3.52m	11'0" x 11'5"
Total area	70.0 sq.m.	753 sq.ft.

PLOTS 205, 210, 215 & 220 TYPE LW2\_24

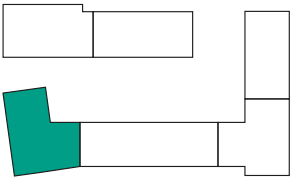
Kitchen/Dining	2.24m x 4.91m	7'3" x 16'1"
Living	4.47m x 2.78m	14'7" x 9'1"
Bedroom 1	3.05m x 3.47m	10'0" x 11'4"
Bedroom 2	3.32m x 3.45m	10'9" x 11'3"
Total area	70.3 sq.m.	757 sq.ft.

PLOTS 206, 211, 216 & 221 TYPE LW2\_23

Kitchen/Living/ Dining	5.99m x 3.92m	19'7" x 12'9"
Bedroom 1	3.53m x 3.52m	11'6" x 11'6"
Bedroom 2	3.53m x 4.24m	11'6" x 13'11"
Total area	73.4 sq.m.	790 sq.ft.



Some items shown in this key may be subject to change, and positions could vary from those indicated on this floorplan. Please refer to Sales Advisor for details of your selected plot. External finishes, landscaping and configuration may vary from plot to plot. Please refer to Sales Advisor for further details. All dimensions are approximate and should not be used for carpet sizes, appliance spaces or furniture. Furniture not to scale and all positions are indicative. **Kitchen layouts are subject to change.** We operate a policy of continuous improvement and individual features such as kitchen and bathroom layouts, doors, windows, garages and elevational treatments may vary from time to time. Consequently these particulars should be treated as general guidance only and do not constitute a contract, part of a contract or a warranty.



- KEY
- 1 Bedroom Apartment
  - 2 Bedroom Apartment
  - W Fitted Wardrobe



**LEGACY  
WHARF**  
STRATFORD

BANKS  
APARTMENTS





BANKS APARTMENTS

Ground & First Floors

PLOT 222 TYPE LW3\_01

Kitchen/Dining	3.42m x 5.27m	11'2" x 17'3"
Living Room	3.45m x 5.98m	11'3" x 19'6"
Bedroom 1	2.98m x 4.15m	9'8" x 13'6"
Bedroom 2	2.68m x 4.82m	8'8" x 15'8"
Bedroom 3	2.20m x 5.02m	7'2" x 16'5"
Total area	119.9 sq.m.	1291 sq.ft.

PLOT 223 TYPE LW3\_02

Kitchen/Dining	3.42m x 5.27m	11'2" x 17'3"
Living Room	5.12m x 5.84m	16'8" x 19'2"
Bedroom 1	3.42m x 4.76m	11'2" x 15'6"
Bedroom 2	2.96m x 3.86m	9'7" x 12'7"
Bedroom 3	2.68m x 4.82m	8'8" x 15'8"
Total area	136.4 sq.m.	1468 sq.ft.

PLOT 224 TYPE LW2\_02

Kitchen/Dining	3.42m x 5.27m	11'2" x 17'3"
Living Room	4.11m x 3.68m	13'5" x 12'1"
Bedroom 1	2.98m x 5.25m	9'8" x 17'2"
Bedroom 2	2.68m x 4.82m	8'8" x 15'8"
Total area	112.0 sq.m.	1206 sq.ft.

PLOTS 225, 226 & 227 TYPE LW3\_09

Kitchen/Dining	3.48m x 5.27m	11'4" x 17'3"
Living Room	3.45m x 5.98m	11'3" x 19'6"
Bedroom 1	2.87m x 4.15m	9'4" x 13'6"
Bedroom 2	2.78m x 4.82m	9'1" x 15'8"
Bedroom 3	2.20m x 5.02m	7'2" x 16'5"
Total area	119.5 sq.m.	1286 sq.ft.

PLOT 228 TYPE LW1\_01

Kitchen	3.36m x 2.24m	11'0" x 7'3"
Living/Dining	5.80m x 5.25m	19'0" x 17'2"
Bedroom	2.85m x 4.03m	9'4" x 13'3"
Total area	56.6 sq.m.	609 sq.ft.



PLOT 222  
TYPE LW3\_01

PLOT 223  
TYPE LW3\_02

PLOT 228  
TYPE LW1\_01

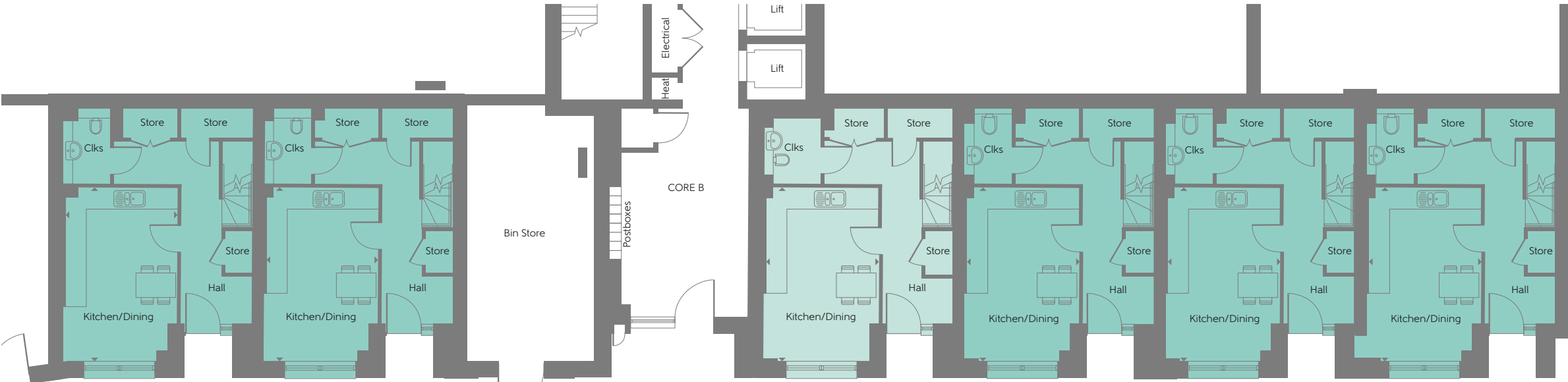
PLOT 224  
TYPE LW2\_02

PLOT 225  
TYPE LW3\_09

PLOT 226  
TYPE LW3\_09

PLOT 227  
TYPE LW3\_09

FIRST FLOOR



PLOT 222  
TYPE LW3\_01

PLOT 223  
TYPE LW3\_02

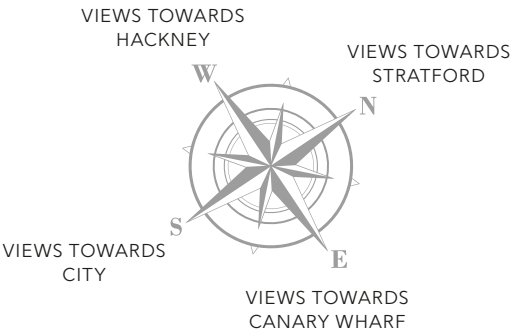
PLOT 224  
TYPE LW2\_02

PLOT 225  
TYPE LW3\_09

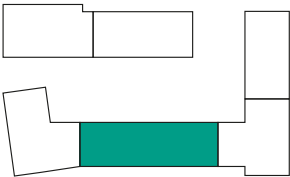
PLOT 226  
TYPE LW3\_09

PLOT 227  
TYPE LW3\_09

GROUND FLOOR



Some items shown in this key may be subject to change, and positions could vary from those indicated on this floorplan. Please refer to Sales Advisor for details of your selected plot. External finishes, landscaping and configuration may vary from plot to plot. Please refer to Sales Advisor for further details. All dimensions are approximate and should not be used for carpet sizes, appliance spaces or furniture. Furniture not to scale and all positions are indicative. **Kitchen layouts are subject to change.** We operate a policy of continuous improvement and individual features such as kitchen and bathroom layouts, doors, windows, garages and elevational treatments may vary from time to time. Consequently these particulars should be treated as general guidance only and do not constitute a contract, part of a contract or a warranty.



- KEY**
- 1 Bedroom Apartment
  - 2 Bedroom Apartment
  - 3 Bedroom Apartment
  - W Fitted Wardrobe



BANKS APARTMENTS

Second - Fourth Floors

**PLOTS 229, 236 & 243** TYPE LW1\_14

Kitchen	3.15m x 2.47m	10'3" x 8'1"
Living/Dining	7.01m x 3.22m	23'0" x 10'5"
Bedroom	4.10m x 3.05m	13'5" x 10'0"
Total area	58.3 sq.m.	628 sq.ft.

**PLOTS 230, 237 & 244** TYPE LW2\_19

Kitchen/Living/ Dining	5.69m x 5.15m	18'7" x 16'11"
Bedroom 1	2.90m x 4.57m	9'5" x 15'0"
Bedroom 2	2.75m x 4.87m	9'0" x 16'0"
Total area	83.9 sq.m.	903 sq.ft.

**PLOTS 231, 232, 233, 238,  
239, 240, 245, 246 & 247** TYPE LW1\_07

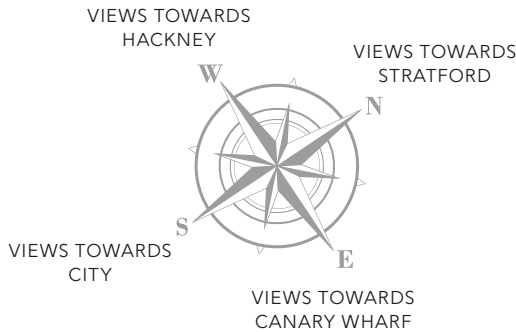
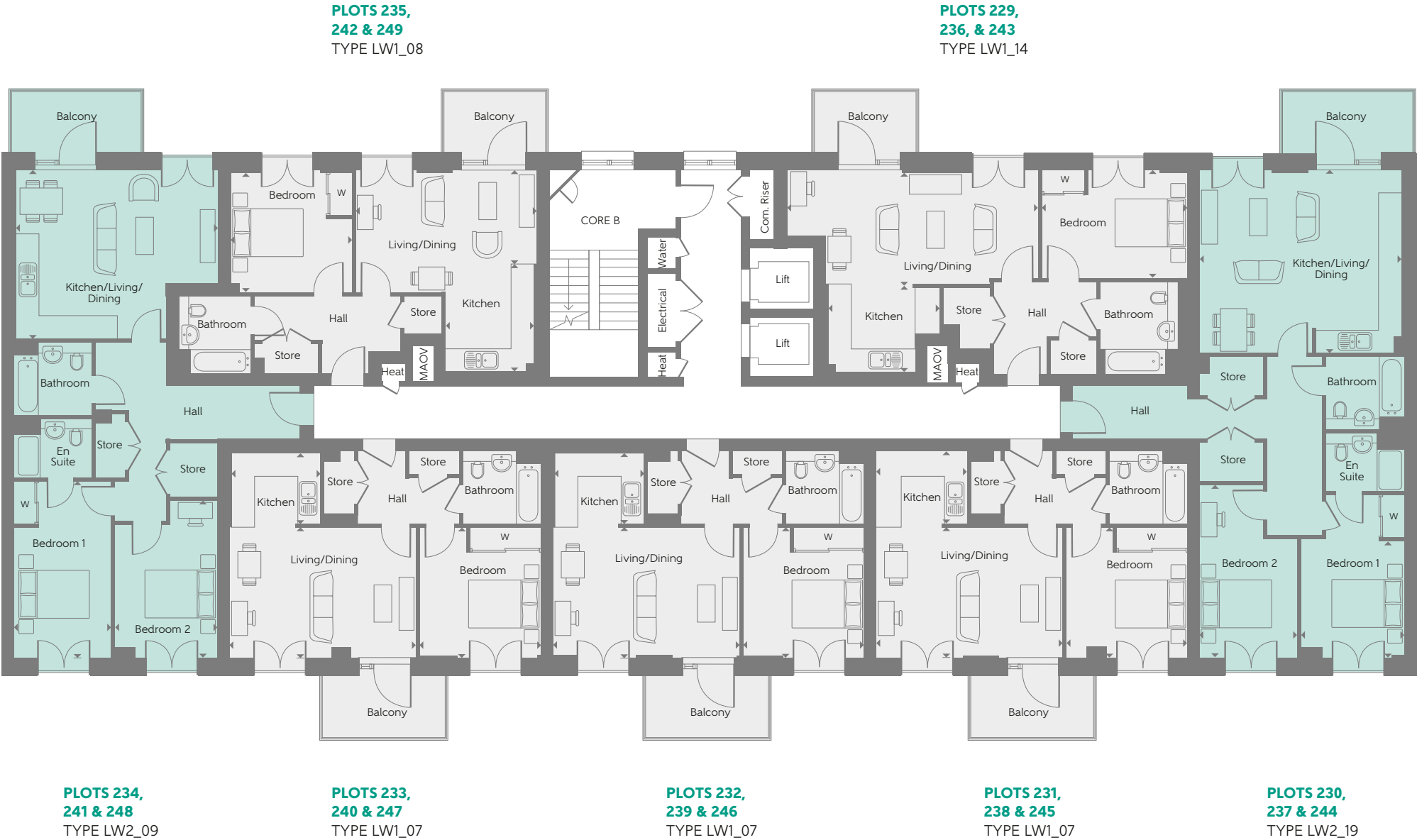
Kitchen	2.50m x 2.09m	8'2" x 6'8"
Living/Dining	5.25m x 3.66m	17'2" x 12'0"
Bedroom	3.42m x 3.66m	11'2" x 12'0"
Total area	50.7 sq.m.	546 sq.ft.

**PLOTS 234, 241 & 248** TYPE LW2\_09

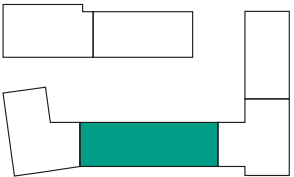
Kitchen/Living/ Dining	4.76m x 5.69m	15'6" x 18'7"
Bedroom 1	4.96m x 2.75m	16'3" x 9'0"
Bedroom 2	4.42m x 2.90m	14'6" x 9'5"
Total area	78.1 sq.m.	841 sq.ft.

**PLOTS 235, 242 & 249** TYPE LW1\_08

Kitchen	2.49m x 3.03m	8'2" x 9'9"
Living/Dining	5.09m x 2.65m	16'7" x 8'7"
Bedroom	3.45m x 3.45m	11'3" x 11'3"
Total area	50.6 sq.m.	545 sq.ft.



Some items shown in this key may be subject to change, and positions could vary from those indicated on this floorplan. Please refer to Sales Advisor for details of your selected plot. External finishes, landscaping and configuration may vary from plot to plot. Please refer to Sales Advisor for further details. All dimensions are approximate and should not be used for carpet sizes, appliance spaces or furniture. Furniture not to scale and all positions are indicative. **Kitchen layouts are subject to change.** We operate a policy of continuous improvement and individual features such as kitchen and bathroom layouts, doors, windows, garages and elevational treatments may vary from time to time. Consequently these particulars should be treated as general guidance only and do not constitute a contract, part of a contract or a warranty.



- KEY**
- 1 Bedroom Apartment
  - 2 Bedroom Apartment
  - W Fitted Wardrobe



BANKS APARTMENTS

Fifth Floor

PLOT 250 TYPE LW2\_13

Kitchen/Living/ Dining	5.39m x 5.68m	17'7" x 18'6"
Bedroom 1	3.29m x 3.10m	10'8" x 10'2"
Bedroom 2	3.79m x 3.47m	12'4" x 11'4"
Total area	79.9 sq.m.	860 sq.ft.

PLOT 251 TYPE LW2\_12

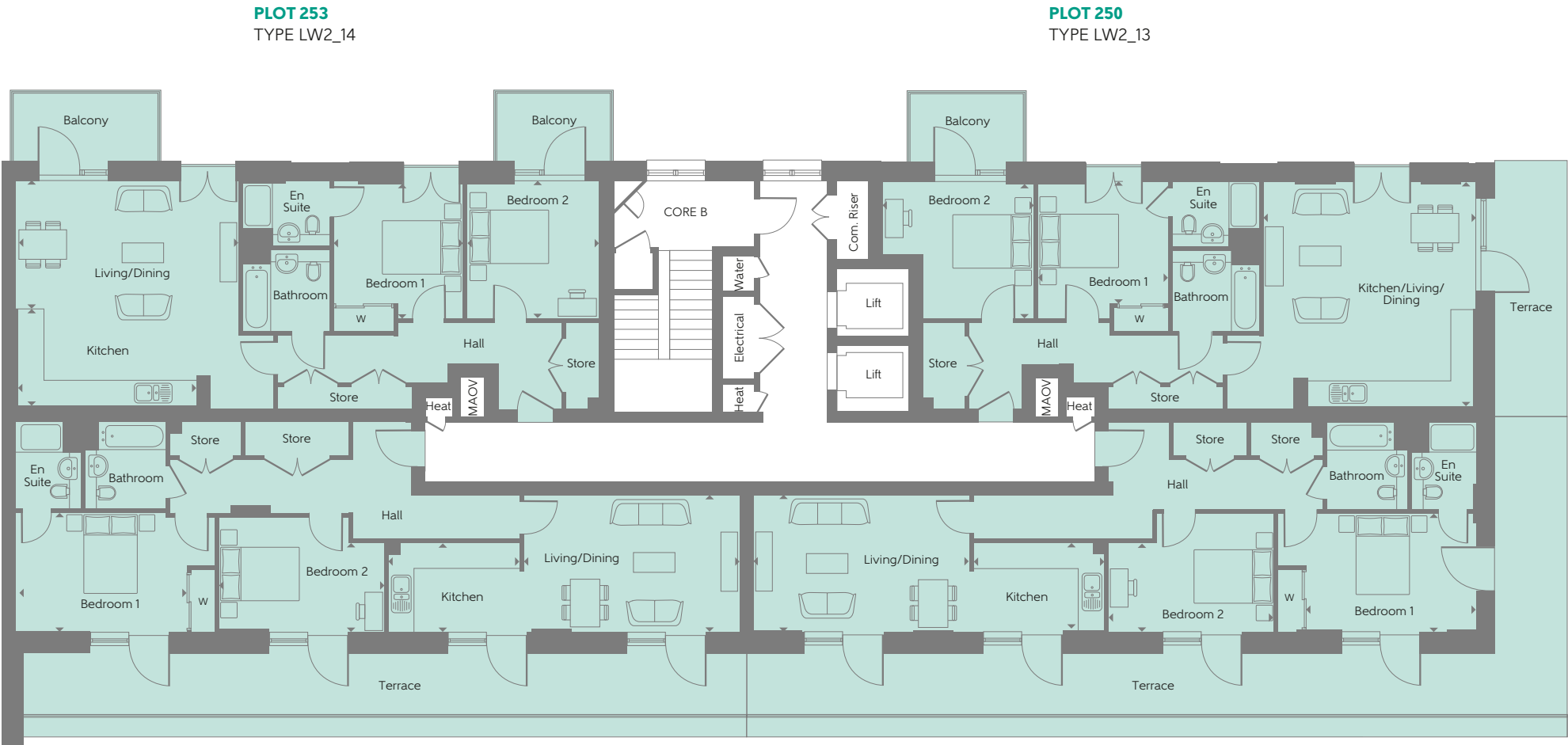
Kitchen	3.40m x 2.24m	11'2" x 7'4"
Living/Dining	5.45m x 3.39m	17'9" x 11'1"
Bedroom 1	4.32m x 2.99m	14'2" x 9'10"
Bedroom 2	4.18m x 2.99m	13'7" x 9'10"
Total area	79.8 sq.m.	859 sq.ft.

PLOT 252 TYPE LW2\_11

Kitchen	3.40m x 2.24m	11'2" x 7'4"
Living/Dining	5.45m x 3.46m	17'9" x 11'4"
Bedroom 1	4.32m x 2.99m	14'2" x 9'10"
Bedroom 2	4.18m x 2.89m	13'7" x 9'5"
Total area	81.1 sq.m.	873 sq.ft.

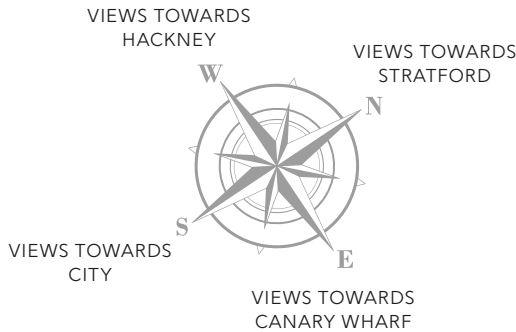
PLOT 253 TYPE LW2\_14

Kitchen	4.51m x 2.45m	14'8" x 8'0"
Living/Dining	5.63m x 3.23m	18'5" x 10'6"
Bedroom 1	3.28m x 3.47m	10'8" x 11'4"
Bedroom 2	3.34m x 3.47m	10'9" x 11'4"
Total area	82.3 sq.m.	886 sq.ft.

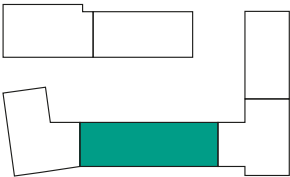


PLOT 252  
TYPE LW2\_11

PLOT 251  
TYPE LW2\_12



Some items shown in this key may be subject to change, and positions could vary from those indicated on this floorplan. Please refer to Sales Advisor for details of your selected plot. External finishes, landscaping and configuration may vary from plot to plot. Please refer to Sales Advisor for further details. All dimensions are approximate and should not be used for carpet sizes, appliance spaces or furniture. Furniture not to scale and all positions are indicative. **Kitchen layouts are subject to change.** We operate a policy of continuous improvement and individual features such as kitchen and bathroom layouts, doors, windows, garages and elevational treatments may vary from time to time. Consequently these particulars should be treated as general guidance only and do not constitute a contract, part of a contract or a warranty.



**KEY**  
2 Bedroom Apartment  
W Fitted Wardrobe



**LEGACY  
WHARF**  
STRATFORD

CLARET  
APARTMENTS





CLARET APARTMENTS

Ground & First Floors

PLOT 254 TYPE LW2\_01

Kitchen/Living/		
Dining	5.17m x 4.75m	16'9" x 15'6"
Bedroom 1	3.42m x 4.77m	11'3" x 15'8"
Bedroom 2	2.97m x 3.94m	9'9" x 12'11"
Total area	75.4 sq.m.	812 sq.ft.

PLOT 255 TYPE LW2\_01

Kitchen	1.88m x 3.10m	6'2" x 10'2"
Living/Dining	3.64m x 2.87m	11'9" x 9'4"
Bedroom	3.16m x 3.73m	10'4" x 12'2"
Total area	45.7 sq.m.	492 sq.ft.

PLOT 256 TYPE LW2\_01

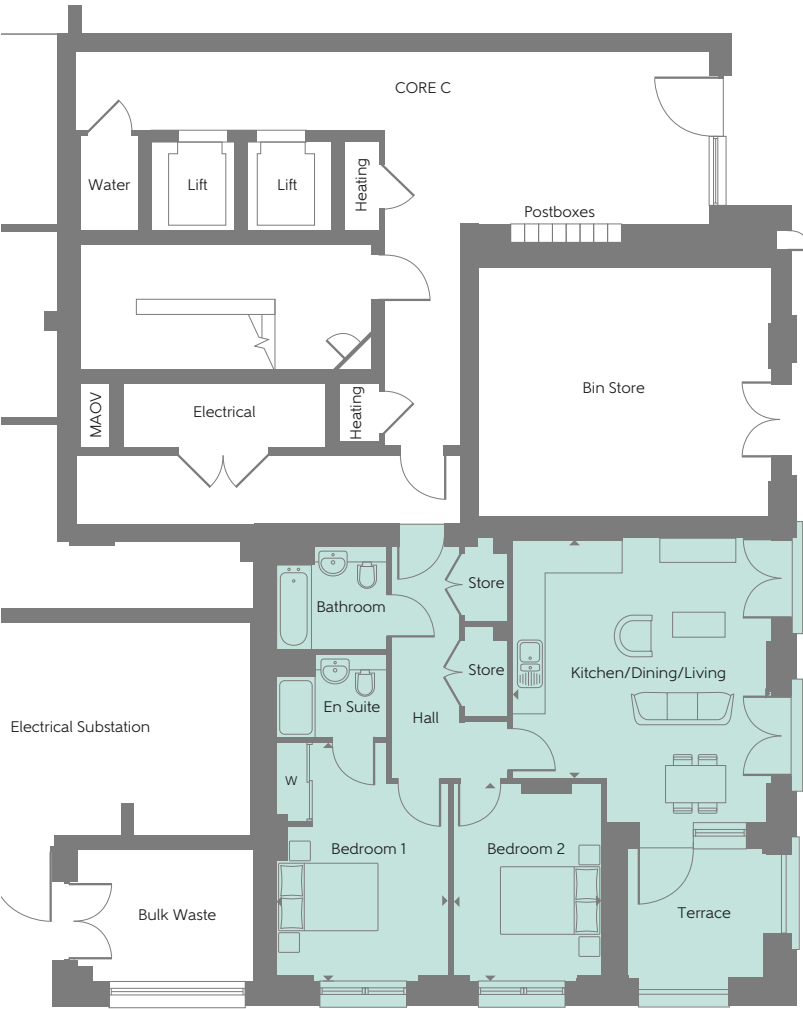
Kitchen/Living/		
Dining	5.17m x 4.75m	16'9" x 15'6"
15'6" Bedroom 1	3.42m x 4.73m	11'3" x 15'6"
Bedroom 2	2.95m x 3.91m	9'8" x 12'10"
Total area	74.9 sq.m.	806 sq.ft.

PLOT 257 TYPE LW2\_03

Kitchen	2.56m x 3.45m	8'4" x 11'3"
Living/Dining	5.99m x 3.51m	19'6" x 11'5"
Bedroom 1	4.88m x 3.27m	16'0" x 10'7"
Bedroom 2	3.35m x 3.51m	11'0" x 11'5"
Total area	73.9 sq.m.	795 sq.ft.

PLOT 258 TYPE LW1\_21

Kitchen	2.57m x 4.07m	8'4" x 13'3"
Living/Dining	5.22m x 3.45m	17'1" x 11'3"
Bedroom	3.55m x 3.45m	11'6" x 11'3"
Total area	61.8 sq.m.	665 sq.ft.



PLOT 254  
TYPE LW2\_01



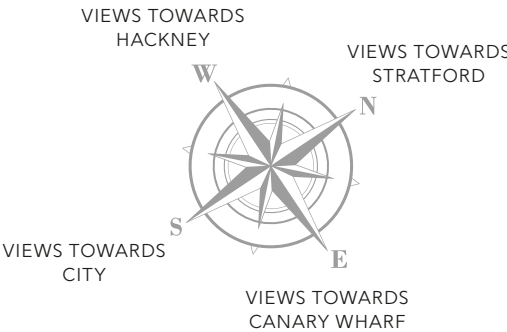
PLOT 258  
TYPE LW1\_21

PLOT 255  
TYPE LW0\_01

PLOT 257  
TYPE LW2\_03

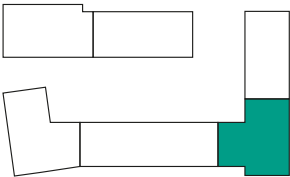
PLOT 256  
TYPE LW2\_01

GROUND FLOOR



FIRST FLOOR

Some items shown in this key may be subject to change, and positions could vary from those indicated on this floorplan. Please refer to Sales Advisor for details of your selected plot. External finishes, landscaping and configuration may vary from plot to plot. Please refer to Sales Advisor for further details. All dimensions are approximate and should not be used for carpet sizes, appliance spaces or furniture. Furniture not to scale and all positions are indicative. **Kitchen layouts are subject to change.** We operate a policy of continuous improvement and individual features such as kitchen and bathroom layouts, doors, windows, garages and elevational treatments may vary from time to time. Consequently these particulars should be treated as general guidance only and do not constitute a contract, part of a contract or a warranty.



- KEY
- 1 Bedroom Apartment
  - 2 Bedroom Apartment
  - W Fitted Wardrobe



CLARET APARTMENTS

Second - Fourth Floors

PLOTS 259, 265 & 271 TYPE LW2\_05

Kitchen/Living/ Dining	5.32m x 5.56m	17'4" x 18'6"
Bedroom 1	5.69m x 2.88m	18'8" x 9'5"
Bedroom 2	4.74m x 2.75m	15'6" x 9'0"
Total area	78.7 sq.m.	847 sq.ft.

PLOTS 260, 266 & 272 TYPE LW1\_09

Kitchen	2.24m x 2.50m	7'3" x 8'2"
Living/Dining	3.55m x 5.46m	11'6" x 17'9"
Bedroom	3.55m x 3.45m	11'6" x 11'3"
Total area	52.4 sq.m.	564 sq.ft.

PLOTS 261, 267 & 273 TYPE LW2\_21

Kitchen/Living/ Dining	4.74m x 9.21m	15'6" x 30'2"
Bedroom 1	3.56m x 3.65m	11'7" x 12'0"
Bedroom 2	3.10m x 3.65m	10'2" x 12'0"
Total area	88.1 sq.m.	948 sq.ft.

PLOTS 262, 268 & 274 TYPE LW2\_03

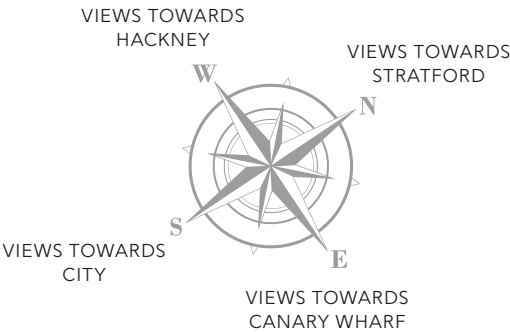
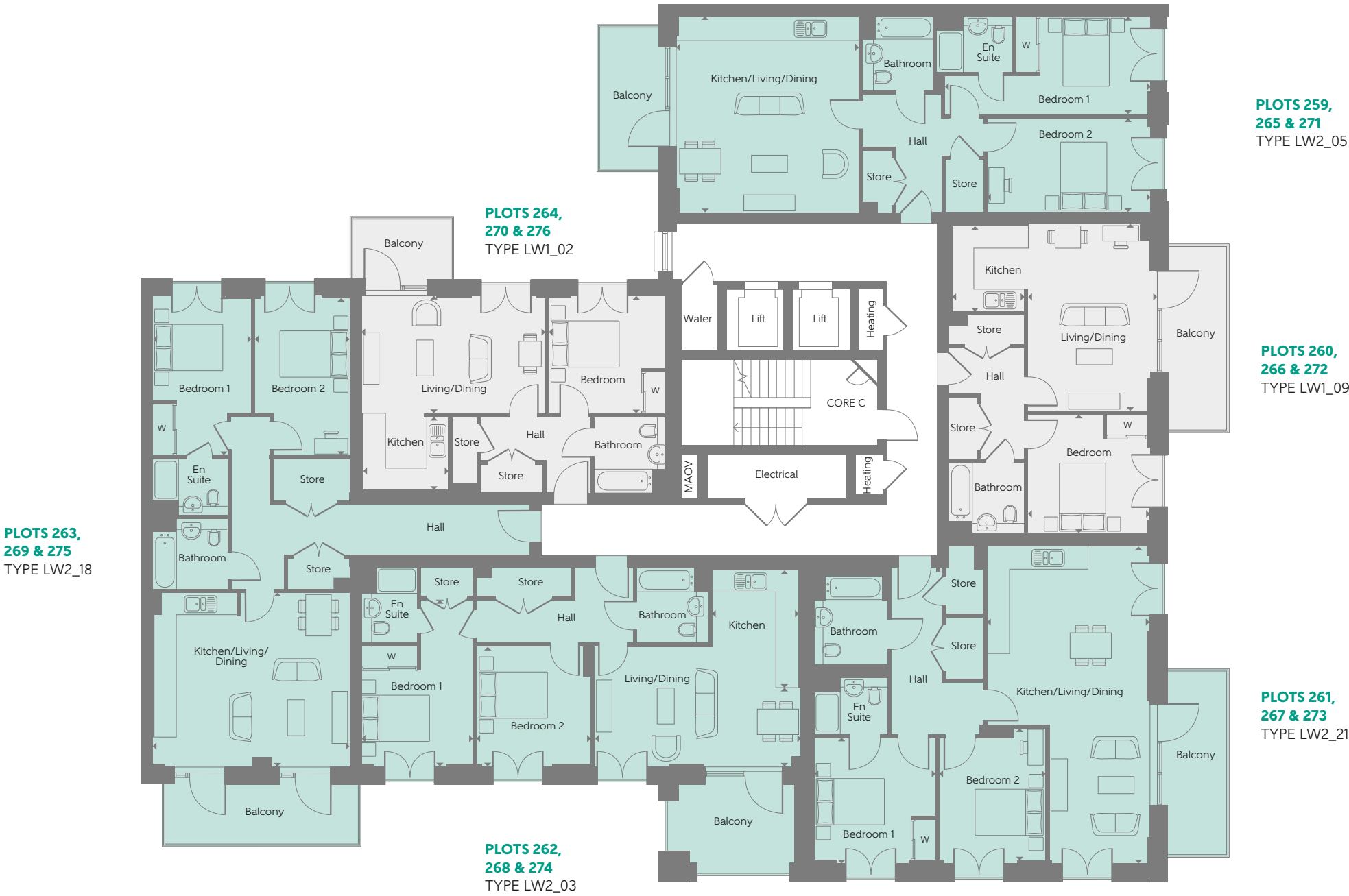
Kitchen	2.56m x 3.45m	8'4" x 11'3"
Living/Dining	5.99m x 3.51m	19'6" x 11'5"
Bedroom 1	4.88m x 3.27m	16'0" x 10'7"
Bedroom 2	3.35m x 3.51m	11'0" x 11'5"
Total area	73.9 sq.m.	795 sq.ft.

PLOTS 263, 269 & 275 TYPE LW2\_18

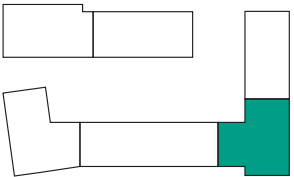
Kitchen/Living/ Dining	5.75m x 5.05m	18'10" x 16'6"
Bedroom 1	2.90m x 4.67m	9'5" x 15'3"
Bedroom 2	2.75m x 4.67m	9'0" x 15'3"
Total area	86.4 sq.m.	930 sq.ft.

PLOTS 264, 270 & 276 TYPE LW1\_02

Kitchen	2.50m x 2.24m	8'2" x 7'3"
Living/Dining	5.32m x 3.45m	17'4" x 11'3"
Bedroom	3.45m x 3.45m	11'3" x 11'3"
Total area	50.8 sq.m.	547 sq.ft.



Some items shown in this key may be subject to change, and positions could vary from those indicated on this floorplan. Please refer to Sales Advisor for details of your selected plot. External finishes, landscaping and configuration may vary from plot to plot. Please refer to Sales Advisor for further details. All dimensions are approximate and should not be used for carpet sizes, appliance spaces or furniture. Furniture not to scale and all positions are indicative. **Kitchen layouts are subject to change.** We operate a policy of continuous improvement and individual features such as kitchen and bathroom layouts, doors, windows, garages and elevational treatments may vary from time to time. Consequently these particulars should be treated as general guidance only and do not constitute a contract, part of a contract or a warranty.



- KEY**
- 1 Bedroom Apartment
  - 2 Bedroom Apartment
  - W Fitted Wardrobe



CLARET APARTMENTS

Fifth Floor

PLOT 277 TYPE LW2\_05

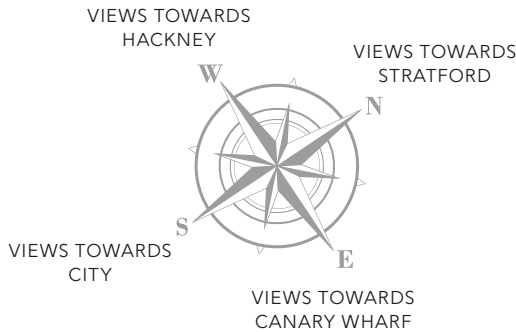
Kitchen/Living/ Dining	5.32m x 5.56m	17'4" x 18'6"
Bedroom 1	5.69m x 2.88m	18'8" x 9'5"
Bedroom 2	4.74m x 2.75m	15'6" x 9'0"
Total area	78.7 sq.m.	847 sq.ft.

PLOT 278 TYPE LW1\_09

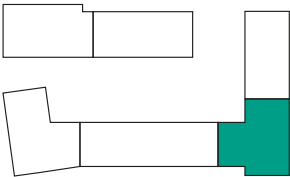
Kitchen	2.24m x 2.50m	7'3" x 8'2"
Living/Dining	3.55m x 5.46m	11'6" x 17'9"
Bedroom	3.55m x 3.45m	11'6" x 11'3"
Total area	52.4 sq.m.	564 sq.ft.

PLOT 279 TYPE LW3\_07

Kitchen/Living/ Dining	4.80m x 9.14m	15'7" x 30'0"
Bedroom 1	5.14m x 2.82m	16'9" x 9'2"
Bedroom 2	3.05m x 4.25m	10'0" x 14'0"
Bedroom 3	2.65m x 4.25m	8'7" x 14'0"
Total area	110.9 sq.m.	1194 sq.ft.



Some items shown in this key may be subject to change, and positions could vary from those indicated on this floorplan. Please refer to Sales Advisor for details of your selected plot. External finishes, landscaping and configuration may vary from plot to plot. Please refer to Sales Advisor for further details. All dimensions are approximate and should not be used for carpet sizes, appliance spaces or furniture. Furniture not to scale and all positions are indicative. **Kitchen layouts are subject to change.** We operate a policy of continuous improvement and individual features such as kitchen and bathroom layouts, doors, windows, garages and elevational treatments may vary from time to time. Consequently these particulars should be treated as general guidance only and do not constitute a contract, part of a contract or a warranty.



- KEY**
- 1 Bedroom Apartment
  - 2 Bedroom Apartment
  - 3 Bedroom Apartment
  - W Fitted Wardrobe



CLARET APARTMENTS

Sixth Floor

PLOT 280 TYPE LW2\_05

Kitchen/Living/ Dining	5.32m x 5.56m	17'4" x 18'6"
Bedroom 1	5.69m x 2.88m	18'8" x 9'5"
Bedroom 2	4.74m x 2.75m	15'6" x 9'0"
Total area	78.7 sq.m.	847 sq.ft.

PLOT 281 TYPE LW1\_09

Kitchen	2.24m x 2.50m	7'3" x 8'2"
Living/Dining	3.55m x 5.46m	11'6" x 17'9"
Bedroom	3.55m x 3.45m	11'6" x 11'3"
Total area	52.4 sq.m.	564 sq.ft.

PLOT 282 TYPE LW3\_07

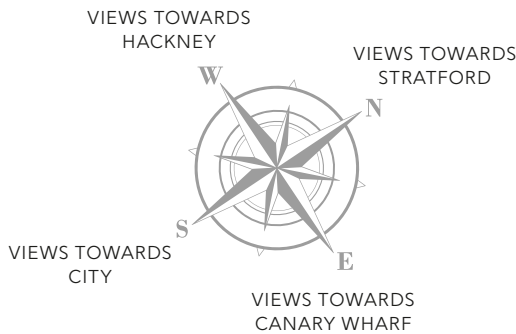
Kitchen/Living/ Dining	4.80m x 9.14m	15'7" x 30'0"
Bedroom 1	5.14m x 2.82m	16'9" x 9'2"
Bedroom 2	3.05m x 4.25m	10'0" x 14'0"
Bedroom 3	2.65m x 4.25m	8'7" x 14'0"
Total area	110.9 sq.m.	1194 sq.ft.



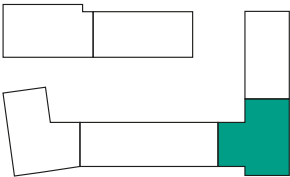
PLOT 280  
TYPE LW2\_05

PLOT 281  
TYPE LW1\_09

PLOT 282  
TYPE LW3\_07



Some items shown in this key may be subject to change, and positions could vary from those indicated on this floorplan. Please refer to Sales Advisor for details of your selected plot. External finishes, landscaping and configuration may vary from plot to plot. Please refer to Sales Advisor for further details. All dimensions are approximate and should not be used for carpet sizes, appliance spaces or furniture. Furniture not to scale and all positions are indicative. **Kitchen layouts are subject to change.** We operate a policy of continuous improvement and individual features such as kitchen and bathroom layouts, doors, windows, garages and elevational treatments may vary from time to time. Consequently these particulars should be treated as general guidance only and do not constitute a contract, part of a contract or a warranty.



- KEY**
- 1 Bedroom Apartment
  - 2 Bedroom Apartment
  - 3 Bedroom Apartment
  - W Fitted Wardrobe



CLARET APARTMENTS

Seventh Floor

**PLOT 283** TYPE LW2\_16

Kitchen	3.65m x 2.89m	12'0" x 9'5"
Living/Dining	3.37m x 5.83m	11'1" x 19'1"
Bedroom 1	6.03m x 2.88m	19'8" x 9'4"
Bedroom 2	4.20m x 2.75m	13'8" x 9'0"
Total area	77.8 sq.m.	837 sq.ft.

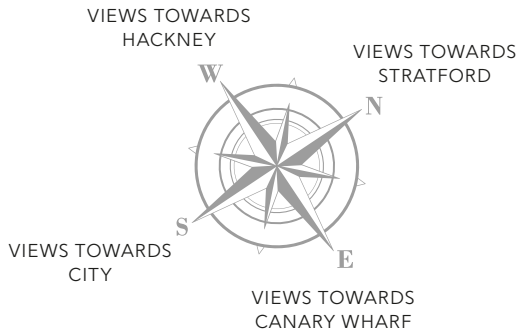
**PLOT 284** TYPE LW2\_15

Kitchen	2.49m x 3.10m	8'2" x 10'2"
Living/Dining	4.28m x 4.83m	14'0" x 15'8"
Bedroom 1	3.37m x 3.49m	11'0" x 11'5"
Bedroom 2	3.71m x 3.27m	12'2" x 10'7"
Total area	120.0 sq.m.	1292 sq.ft.

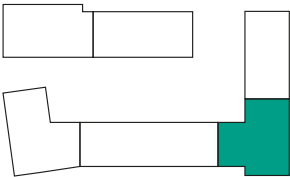


**PLOT 283**  
TYPE LW2\_16

**PLOT 284**  
TYPE LW2\_15



Some items shown in this key may be subject to change, and positions could vary from those indicated on this floorplan. Please refer to Sales Advisor for details of your selected plot. External finishes, landscaping and configuration may vary from plot to plot. Please refer to Sales Advisor for further details. All dimensions are approximate and should not be used for carpet sizes, appliance spaces or furniture. Furniture not to scale and all positions are indicative. **Kitchen layouts are subject to change.** We operate a policy of continuous improvement and individual features such as kitchen and bathroom layouts, doors, windows, garages and elevational treatments may vary from time to time. Consequently these particulars should be treated as general guidance only and do not constitute a contract, part of a contract or a warranty.



**KEY**

- 2 Bedroom Apartment
- Fitted Wardrobe



**LEGACY  
WHARF**  
STRATFORD

VILNIUS  
APARTMENTS

Computer generated image of Vilnius apartments





VILNIUS APARTMENTS

Ground & First Floors

PLOT 285 TYPE LW3\_03A

Kitchen/Dining	5.30m x 3.47m	17'4" x 11'4"
Living Room	6.00m x 3.43m	19'7" x 11'2"
Bedroom 1	4.06m x 2.98m	13'3" x 9'8"
Bedroom 2	4.76m x 2.65m	15'6" x 8'7"
Bedroom 3	5.17m x 2.20m	17'0" x 7'2"
Total area	120.0 sq.m.	1292 sq.ft.

PLOT 286 TYPE LW3\_03B

Kitchen/Dining	5.30m x 3.49m	17'4" x 11'4"
Living Room	6.00m x 3.43m	19'7" x 11'2"
Bedroom 1	4.06m x 2.98m	13'3" x 9'8"
Bedroom 2	4.76m x 2.65m	15'6" x 8'7"
Bedroom 3	5.17m x 2.20m	17'0" x 7'2"
Total area	120.1 sq.m.	1293 sq.ft.

PLOT 287 TYPE LW3\_04

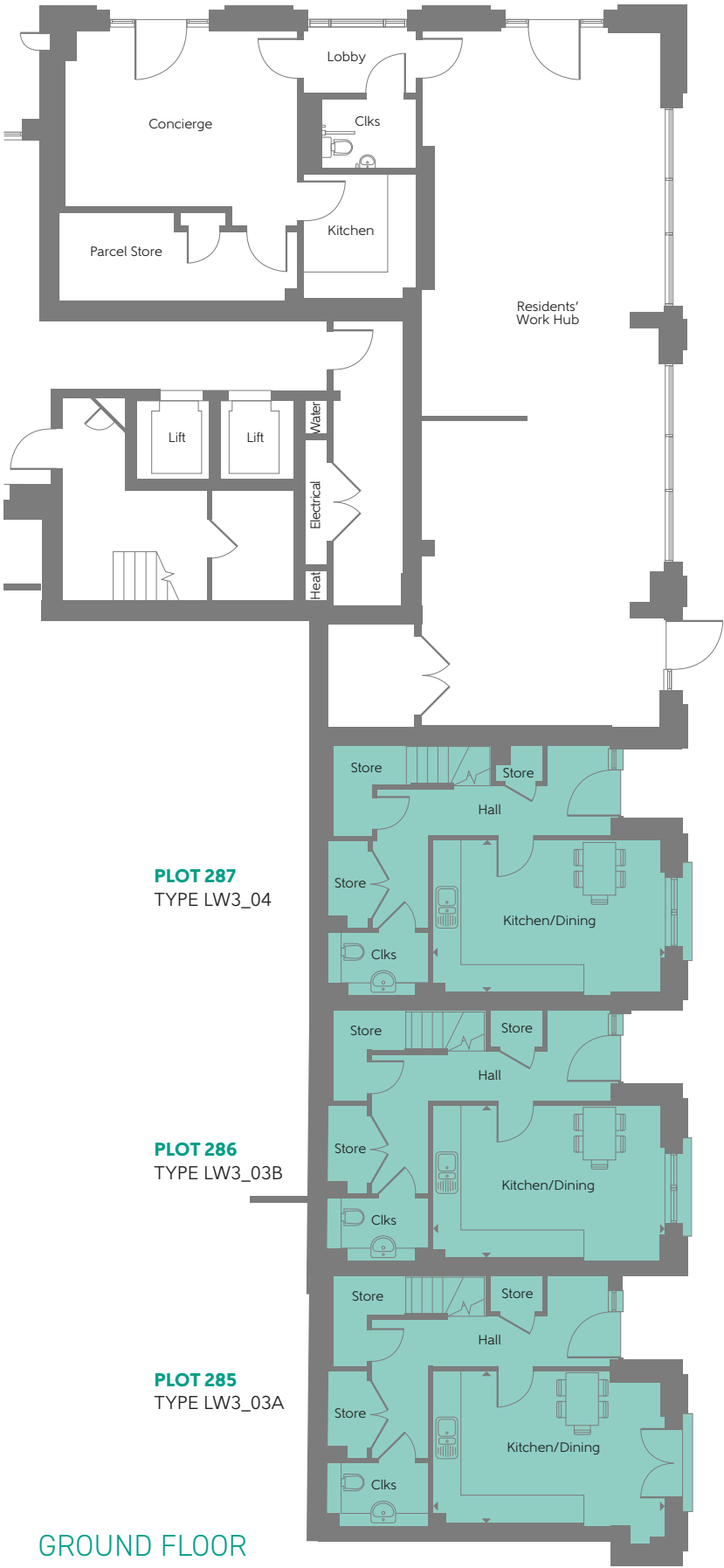
Kitchen/Dining	5.30m x 3.49m	17'4" x 11'5"
Living Room	5.13m x 4.91m	16'8" x 16'1"
Bedroom 1	4.55m x 3.67m	14'9" x 12'0"
Bedroom 2	4.18m x 2.92m	13'7" x 9'6"
Bedroom 3	4.18m x 2.71m	13'7" x 8'9"
Total area	134.8 sq.m.	1451 sq.ft.

PLOT 288 TYPE LW2\_20

Kitchen/Living/ Dining	5.31m x 6.26m	17'4" x 20'5"
Bedroom 1	3.74m x 3.62m	12'3" x 11'9"
Bedroom 2	3.30m x 3.87m	10'8" x 12'7"
Total area	86.3 sq.m.	929 sq.ft.

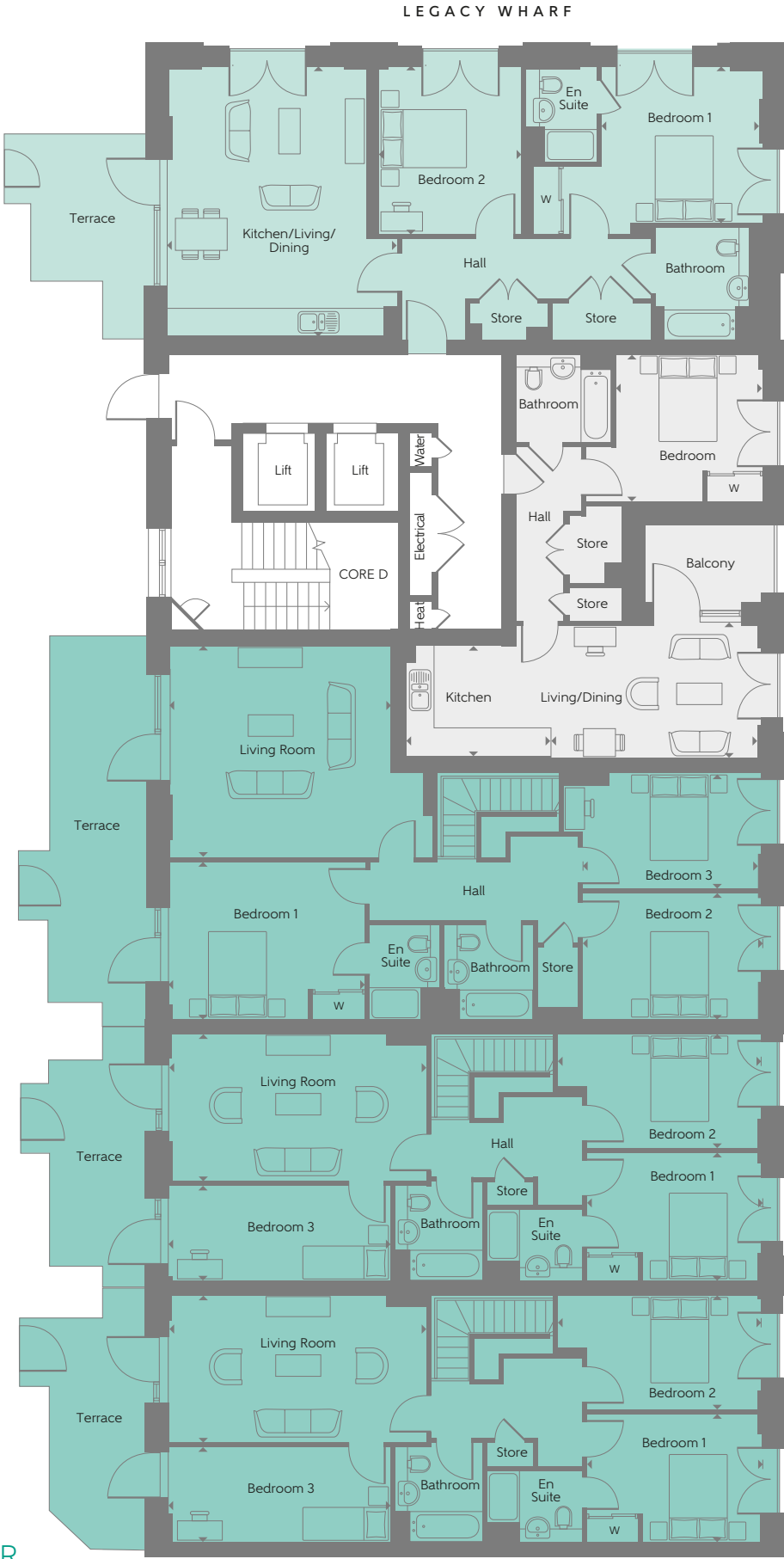
PLOT 289 TYPE LW1\_03

Kitchen	3.38m x 2.55m	11'1" x 8'4"
Living/Dining	4.87m x 3.10m	16'0" x 10'2"
Bedroom	3.42m x 3.42m	11'2" x 11'2"
Total area	51.0 sq.m.	549 sq.ft.



GROUND FLOOR

FIRST FLOOR



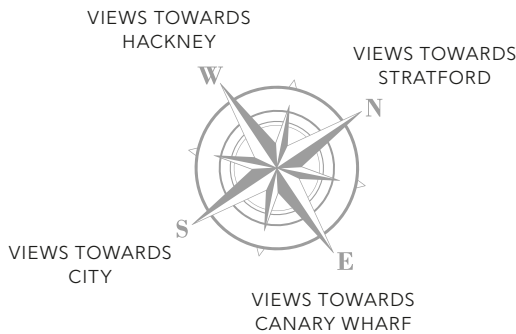
PLOT 288  
TYPE LW2\_20

PLOT 289  
TYPE LW1\_03

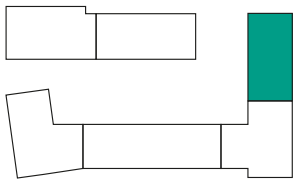
PLOT 287  
TYPE LW3\_04

PLOT 286  
TYPE LW3\_03B

PLOT 285  
TYPE LW3\_03A



Some items shown in this key may be subject to change, and positions could vary from those indicated on this floorplan. Please refer to Sales Advisor for details of your selected plot. External finishes, landscaping and configuration may vary from plot to plot. Please refer to Sales Advisor for further details. All dimensions are approximate and should not be used for carpet sizes, appliance spaces or furniture. Furniture not to scale and all positions are indicative. **Kitchen layouts are subject to change.** We operate a policy of continuous improvement and individual features such as kitchen and bathroom layouts, doors, windows, garages and elevational treatments may vary from time to time. Consequently these particulars should be treated as general guidance only and do not constitute a contract, part of a contract or a warranty.



- KEY**
- 1 Bedroom Apartment
  - 2 Bedroom Apartment
  - 2 Bedroom Apartment
  - W Fitted Wardrobe



VILNIUS APARTMENTS

Second Floor

PLOT 290 TYPE LW1\_17

Kitchen	2.42m x 2.14m	7'9" x 7'0"
Living/Dining	4.79m x 4.12m	15'7" x 13'5"
Bedroom	3.27m x 4.02m	10'7" x 13'2"
Total area	51.2 sq.m.	551 sq.ft.

PLOT 291 TYPE LW2\_27

Kitchen/Living/Dining	5.22m x 4.89m	17'1" x 16'1"
Bedroom 1	3.42m x 2.75m	11'2" x 9'0"
Bedroom 2	3.45m x 3.10m	11'3" x 10'2"
Total area	71.6 sq.m.	771 sq.ft.

PLOT 292 TYPE LW1\_16

Kitchen/Living/Dining	5.65m x 5.72m	18'5" x 18'8"
Bedroom	3.42m x 3.45m	11'2" x 11'3"
Total area	51.0 sq.m.	549 sq.ft.

PLOT 293 TYPE LW2\_06

Kitchen/Living/Dining	5.13m x 5.06m	16'10" x 16'6"
Bedroom 1	3.03m x 2.75m	9'11" x 9'0"
Bedroom 2	4.00m x 2.88m	13'1" x 9'4"
Total area	73.9 sq.m.	795 sq.ft.

PLOT 294 TYPE LW1\_18

Kitchen	2.24m x 2.50m	7'4" x 8'2"
Living/Dining	3.60m x 5.07m	11'8" x 16'6"
Bedroom	3.60m x 3.50m	11'8" x 11'5"
Total area	51.1 sq.m.	550 sq.ft.

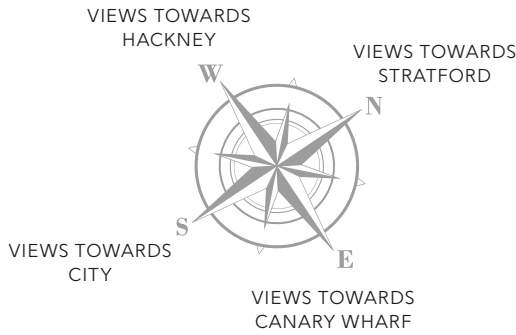
PLOT 294  
TYPE LW1\_18

PLOT 290  
TYPE LW1\_17

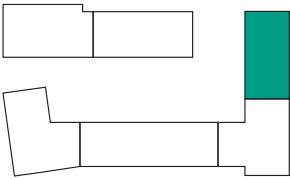
PLOT 291  
TYPE LW2\_27

PLOT 292  
TYPE LW1\_16

PLOT 293  
TYPE LW2\_06



Some items shown in this key may be subject to change, and positions could vary from those indicated on this floorplan. Please refer to Sales Advisor for details of your selected plot. External finishes, landscaping and configuration may vary from plot to plot. Please refer to Sales Advisor for further details. All dimensions are approximate and should not be used for carpet sizes, appliance spaces or furniture. Furniture not to scale and all positions are indicative. **Kitchen layouts are subject to change.** We operate a policy of continuous improvement and individual features such as kitchen and bathroom layouts, doors, windows, garages and elevational treatments may vary from time to time. Consequently these particulars should be treated as general guidance only and do not constitute a contract, part of a contract or a warranty.



- KEY
- 1 Bedroom Apartment
  - 2 Bedroom Apartment
  - W Fitted Wardrobe



VILNIUS APARTMENTS

Third - Sixth Floors

**PLOTS 295, 300, 305 & 310** TYPE LW1\_11

Kitchen	2.62m x 2.24m	8'6" x 7'3"
Living/Dining	4.79m x 4.02m	15'7" x 13'2"
Bedroom	3.27m x 4.02m	10'7" x 13'2"
Total area	51.2 sq.m.	551 sq.ft.

**PLOTS 296, 301, 306 & 311** TYPE LW2\_10

Kitchen/Living/ Dining	5.22m x 5.42m	17'1" x 17'8"
Bedroom 1	3.42m x 2.75m	11'2" x 9'0"
Bedroom 2	3.45m x 3.10m	11'3" x 10'2"
Total area	571.6 sq.m.	771 sq.ft.

**PLOTS 297, 302, 307 & 312** TYPE LW1\_13

Kitchen/Living/ Dining	5.65m x 5.27m	18'5" x 17'3"
Bedroom	3.42m x 3.45m	11'2" x 11'3"
Total area	51.0 sq.m.	549 sq.ft.

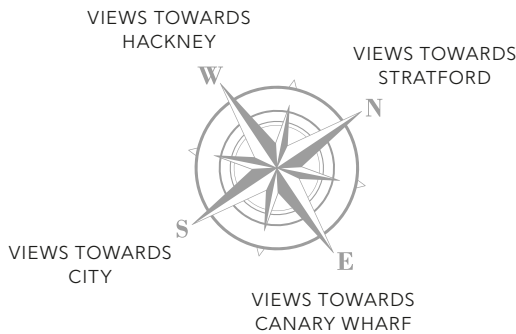
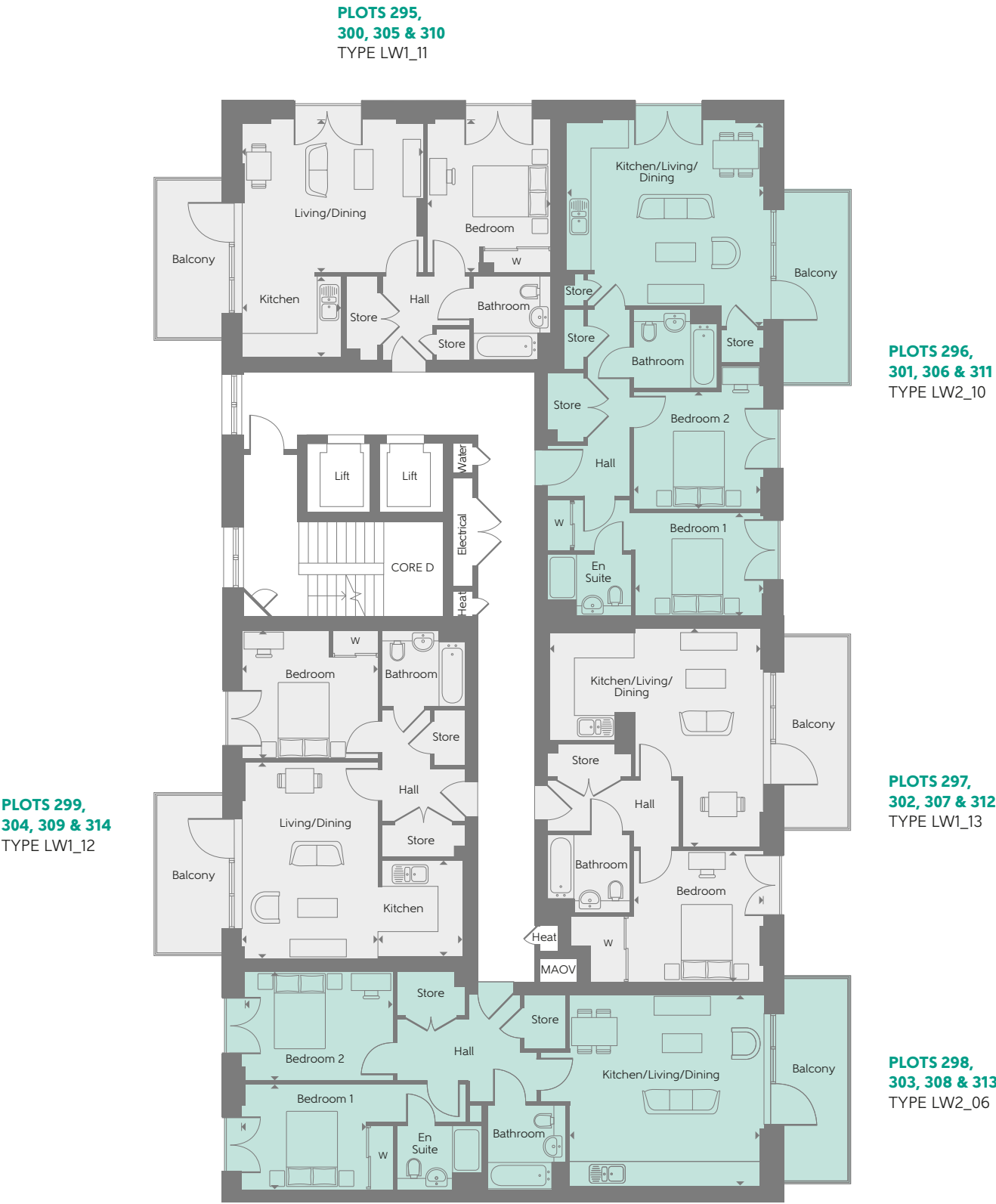
**PLOTS 298, 303, 308 & 313** TYPE LW2\_06

Kitchen/Living/ Dining	5.13m x 5.06m	16'10" x 16'6"
Bedroom 1	3.03m x 2.75m	9'11" x 9'0"
Bedroom 2	4.00m x 2.88m	13'1" x 9'4"
Total area	73.9 sq.m.	795 sq.ft.

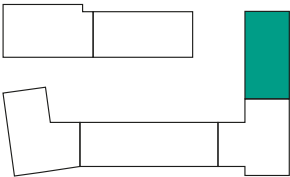
**PLOTS 299, 304, 309 & 314** TYPE LW1\_12

Kitchen	2.24m x 2.50m	7'3" x 8'2"
Living/Dining	3.60m x 5.14m	11'8" x 16'8"
Bedroom	3.60m x 3.44m	11'8" x 11'3"
Total area	51.1 sq.m.	550 sq.ft.

LEGACY WHARF



Some items shown in this key may be subject to change, and positions could vary from those indicated on this floorplan. Please refer to Sales Advisor for details of your selected plot. External finishes, landscaping and configuration may vary from plot to plot. Please refer to Sales Advisor for further details. All dimensions are approximate and should not be used for carpet sizes, appliance spaces or furniture. Furniture not to scale and all positions are indicative. **Kitchen layouts are subject to change.** We operate a policy of continuous improvement and individual features such as kitchen and bathroom layouts, doors, windows, garages and elevational treatments may vary from time to time. Consequently these particulars should be treated as general guidance only and do not constitute a contract, part of a contract or a warranty.



**KEY**

- 1 Bedroom Apartment
- 2 Bedroom Apartment
- W Fitted Wardrobe



VILNIUS APARTMENTS

Seventh Floor

PLOT 315 TYPE LW3\_06

Kitchen	3.52m x 2.80m	11'5" x 9'2"
Living/Dining	3.58m x 6.10m	11'7" x 20'0"
Bedroom 1	3.42m x 4.30m	11'2" x 14'1"
Bedroom 2	4.22m x 3.08m	13'8" x 10'1"
Bedroom 3	2.23m x 4.05m	7'3" x 13'3"
Total area	95.5 sq.m.	1028 sq.ft.

PLOT 316 TYPE LW2\_17

Kitchen	2.38m x 3.38m	7'8" x 11'1"
Living/Dining	3.12m x 5.23m	10'2" x 17'1"
Bedroom 1	6.10m x 2.85m	20'0" x 9'4"
Bedroom 2	4.34m x 2.78m	14'2" x 9'1"
Total area	71.8 sq.m.	773 sq.ft.

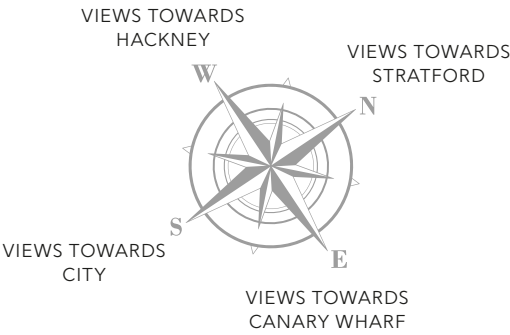
PLOT 317 TYPE LW1\_12

Kitchen	2.24m x 2.50m	7'3" x 8'2"
Living/Dining	3.60m x 5.14m	11'8" x 16'8"
Bedroom	3.60m x 3.44m	11'8" x 11'3"
Total area	51.1 sq.m.	550 sq.ft.

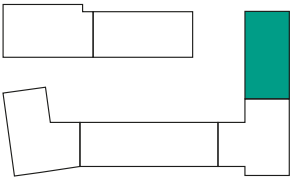
PLOT 317  
TYPE LW1\_12

PLOT 315  
TYPE LW3\_06

PLOT 316  
TYPE LW2\_17



Some items shown in this key may be subject to change, and positions could vary from those indicated on this floorplan. Please refer to Sales Advisor for details of your selected plot. External finishes, landscaping and configuration may vary from plot to plot. Please refer to Sales Advisor for further details. All dimensions are approximate and should not be used for carpet sizes, appliance spaces or furniture. Furniture not to scale and all positions are indicative. **Kitchen layouts are subject to change.** We operate a policy of continuous improvement and individual features such as kitchen and bathroom layouts, doors, windows, garages and elevational treatments may vary from time to time. Consequently these particulars should be treated as general guidance only and do not constitute a contract, part of a contract or a warranty.



- KEY**
- 1 Bedroom Apartment
  - 2 Bedroom Apartment
  - 3 Bedroom Apartment
  - W Fitted Wardrobe



**LEGACY  
WHARF**  
STRATFORD

INVICTUS  
APARTMENTS

Computer generated image of Invictus apartments





INVICTUS APARTMENTS

First Floor

PLOT 318 TYPE LW2\_22

Kitchen	4.25m x 2.40m	13'9" x 7'9"
Living/Dining	4.25m x 4.07m	13'9" x 13'4"
Bedroom 1	3.09m x 4.24m	10'1" x 13'9"
Bedroom 2	4.19m x 2.60m	13'7" x 8'5"
Total area	76.2 sq.m.	820 sq.ft.

PLOT 319 TYPE LW1\_06

Kitchen/Living/		
Dining	4.27m x 7.43m	14'0" x 24'4"
Bedroom	3.22m x 3.84m	10'6" x 12'6"
Total area	61.1 sq.m.	658 sq.ft.

PLOT 320 TYPE LW1\_05

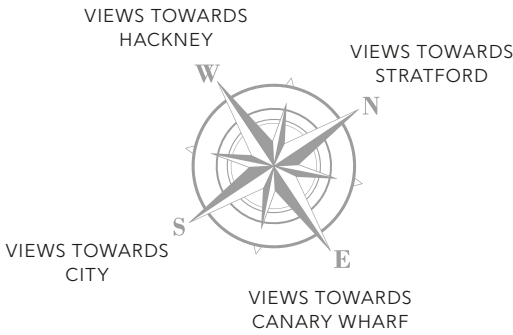
Kitchen	5.25m x 2.22m	17'2" x 7'3"
Living/Dining	4.51m x 3.38m	14'8" x 11'1"
Bedroom	3.97m x 3.36m	13'0" x 11'0"
Total area	56.5 sq.m.	608 sq.ft.

PLOT 321 TYPE LW1\_04

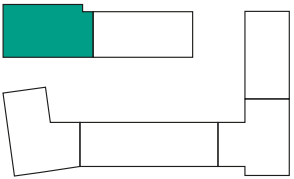
Kitchen	3.08m x 2.09m	10'1" x 6'8"
Living/Dining	5.01m x 5.34m	16'4" x 17'5"
Bedroom	3.28m x 3.17m	10'8" x 10'4"
Total area	56.9 sq.m.	612 sq.ft.

PLOT 322 TYPE LW3\_05

Kitchen	3.30m x 3.37m	10'8" x 11'1"
Living/Dining	2.84m x 6.54m	9'3" x 21'4"
Bedroom 1	3.18m x 4.24m	10'4" x 13'9"
Bedroom 2	3.81m x 3.00m	12'5" x 9'8"
Bedroom 3	2.59m x 3.00m	8'5" x 9'8"
Total area	88.4 sq.m.	952 sq.ft.



Some items shown in this key may be subject to change, and positions could vary from those indicated on this floorplan. Please refer to Sales Advisor for details of your selected plot. External finishes, landscaping and configuration may vary from plot to plot. Please refer to Sales Advisor for further details. All dimensions are approximate and should not be used for carpet sizes, appliance spaces or furniture. Furniture not to scale and all positions are indicative. **Kitchen layouts are subject to change.** We operate a policy of continuous improvement and individual features such as kitchen and bathroom layouts, doors, windows, garages and elevational treatments may vary from time to time. Consequently these particulars should be treated as general guidance only and do not constitute a contract, part of a contract or a warranty.



- KEY**
- 1 Bedroom Apartment
  - 2 Bedroom Apartment
  - 2 Bedroom Apartment
  - W Fitted Wardrobe



INVICTUS APARTMENTS

Second - Fourth Floors

**PLOTS 323, 328 & 333** TYPE LW2\_22

Kitchen	4.25m x 2.40m	13'9" x 7'9"
Living/Dining	4.25m x 4.07m	13'9" x 13'4"
Bedroom 1	3.09m x 4.24m	10'1" x 13'9"
Bedroom 2	4.19m x 2.60m	13'7" x 8'5"
Total area	76.2 sq.m.	820 sq.ft.

**PLOTS 324, 329 & 334** TYPE LW2\_08

Kitchen	3.29m x 2.24m	10'8" x 7'3"
Living/Dining	5.19m x 3.82m	17'0" x 12'5"
Bedroom 1	3.82m x 3.36m	12'5" x 11'0"
Bedroom 2	3.49m x 3.76m	11'5" x 12'3"
Total area	76.8 sq.m.	794 sq.ft.

**PLOTS 325, 330 & 335** TYPE LW1\_10

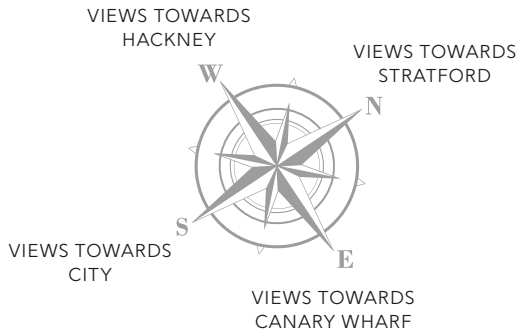
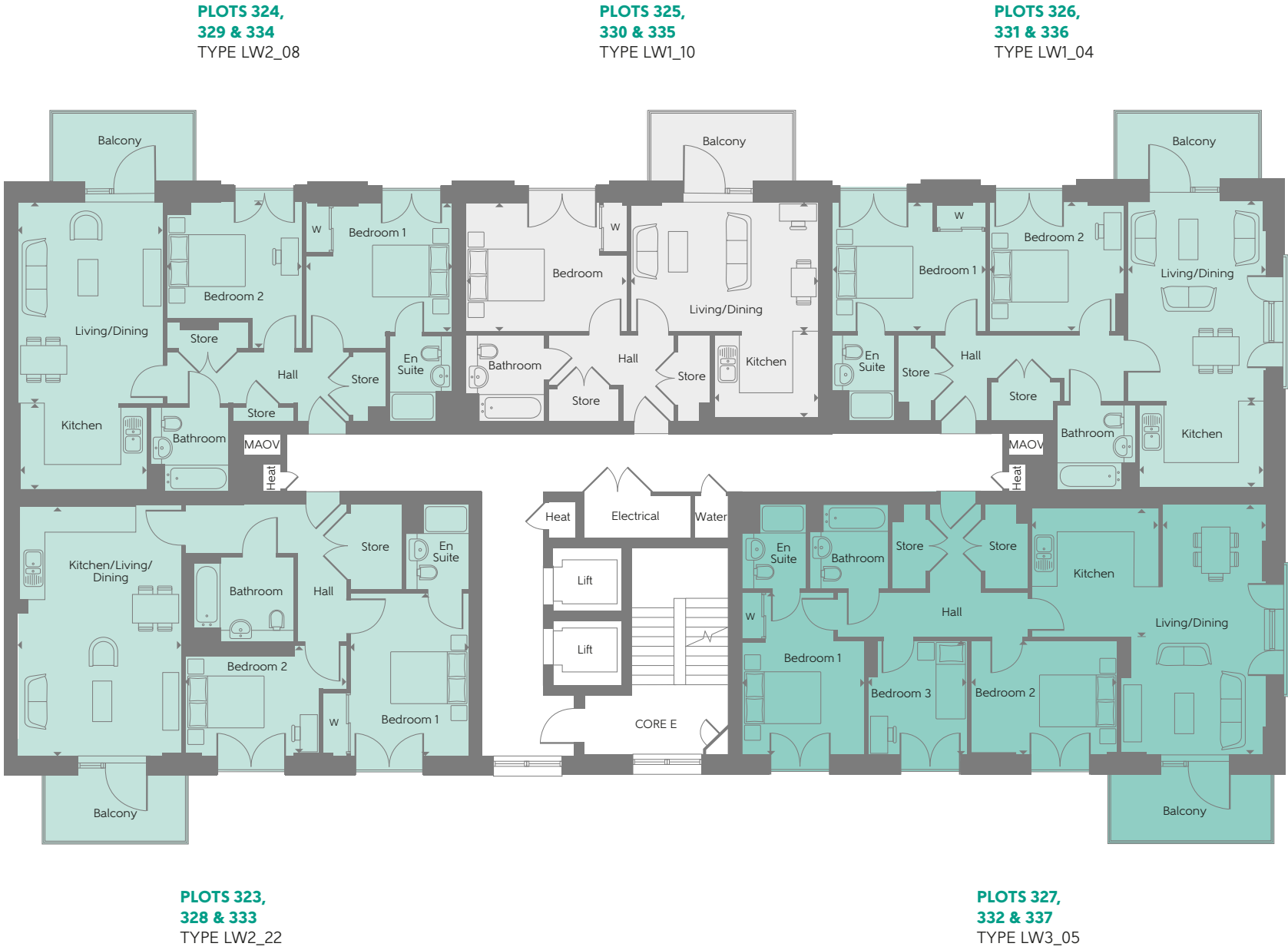
Kitchen	2.69m x 2.24m	8'8" x 7'3"
Living/Dining	4.92m x 3.36m	16'1" x 11'0"
Bedroom	4.18m x 3.36m	13'7" x 11'0"
Total area	52.0 sq.m.	560 sq.ft.

**PLOTS 326, 331 & 336** TYPE LW1\_04

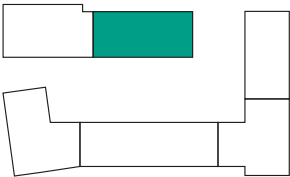
Kitchen	3.23m x 2.24m	10'6" x 7'3"
Living/Dining	5.19m x 3.57m	17'0" x 11'7"
Bedroom 1	4.02m x 3.36m	13'2" x 11'0"
Bedroom 2	3.50m x 3.36m	11'5" x 11'0"
Total area	73.4 sq.m.	790 sq.ft.

**PLOTS 327, 332 & 337** TYPE LW3\_05

Kitchen	3.30m x 3.37m	10'8" x 11'1"
Living/Dining	2.84m x 6.54m	9'3" x 21'4"
Bedroom 1	3.18m x 4.24m	10'4" x 13'9"
Bedroom 2	3.81m x 3.00m	12'5" x 9'8"
Bedroom 3	2.59m x 3.00m	8'5" x 9'8"
Total area	88.6 sq.m.	954 sq.ft.



Some items shown in this key may be subject to change, and positions could vary from those indicated on this floorplan. Please refer to Sales Advisor for details of your selected plot. External finishes, landscaping and configuration may vary from plot to plot. Please refer to Sales Advisor for further details. All dimensions are approximate and should not be used for carpet sizes, appliance spaces or furniture. Furniture not to scale and all positions are indicative. **Kitchen layouts are subject to change.** We operate a policy of continuous improvement and individual features such as kitchen and bathroom layouts, doors, windows, garages and elevational treatments may vary from time to time. Consequently these particulars should be treated as general guidance only and do not constitute a contract, part of a contract or a warranty.



**KEY**

- 1 Bedroom Apartment
- 2 Bedroom Apartment
- 2 Bedroom Apartment
- W Fitted Wardrobe



INVICTUS APARTMENTS

Fifth - Eighth Floors

PLOTS 338, 343, 348 & 353 TYPE LW2\_04

Kitchen	4.34m x 2.09m	14'2" x 6'8"
Living/Dining	4.34m x 4.39m	14'2" x 14'4"
Bedroom 1	3.35m x 4.24m	11'0" x 13'9"
Bedroom 2	3.83m x 3.02m	12'6" x 9'9"
Total area	76.2 sq.m	820 sq.ft.

PLOTS 339, 344, 349 & 354 TYPE LW2\_08

Kitchen	3.29m x 2.24m	10'8" x 7'3"
Living/Dining	5.19m x 3.82m	17'0" x 12'5"
Bedroom 1	3.82m x 3.36m	12'5" x 11'0"
Bedroom 2	3.49m x 3.76m	11'5" x 12'3"
Total area	76.8 sq.m.	794 sq.ft.

PLOTS 340, 345, 350 & 355 TYPE LW1\_10

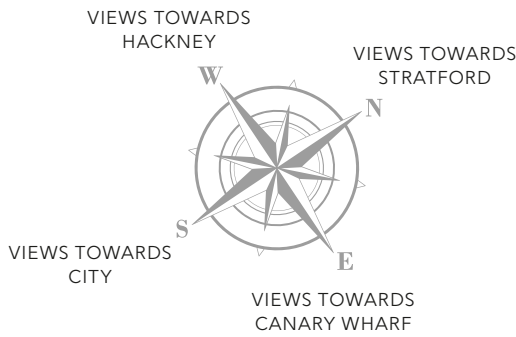
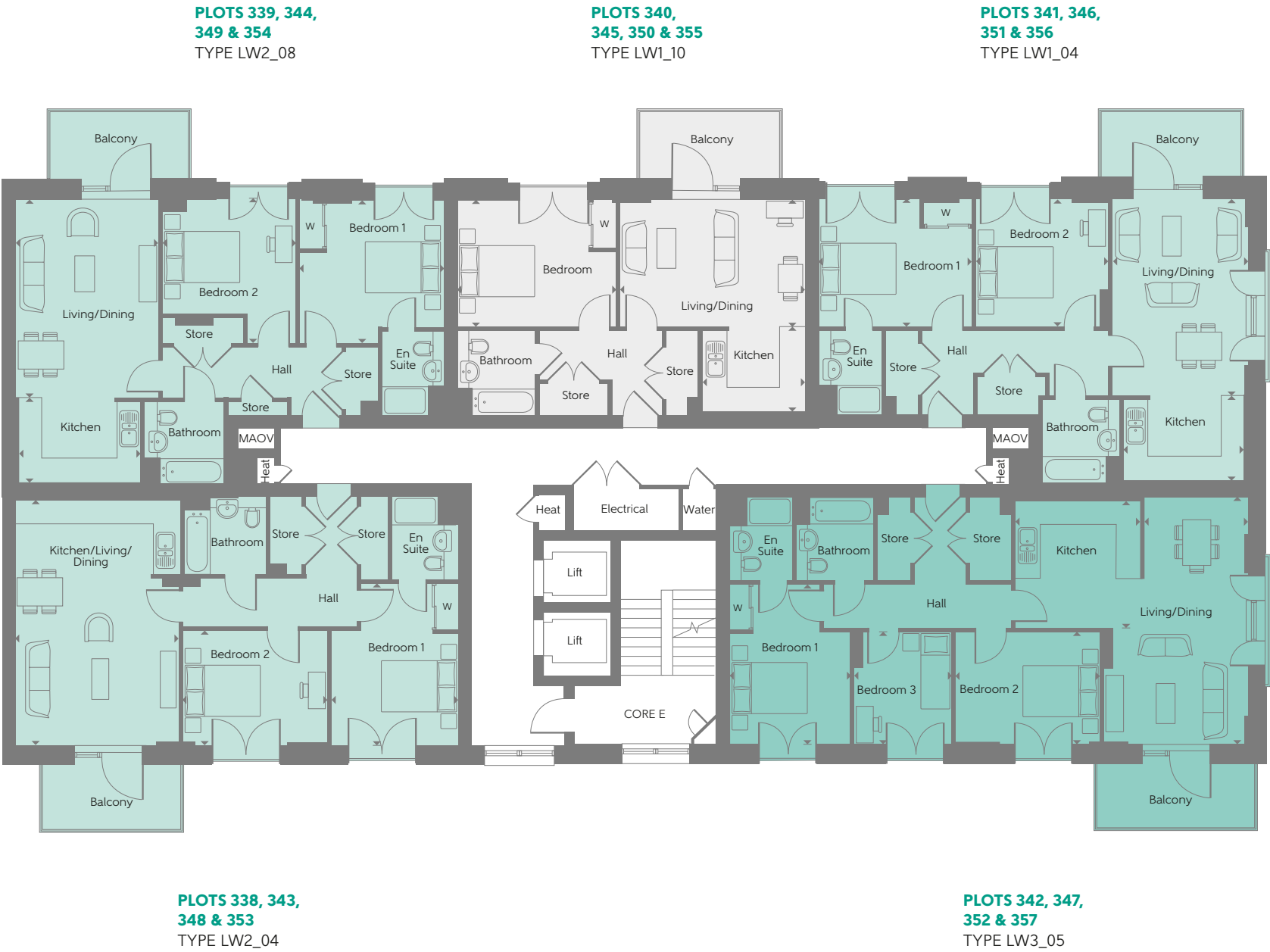
Kitchen	2.69m x 2.24m	8'8" x 7'3"
Living/Dining	4.92m x 3.36m	16'1" x 11'0"
Bedroom	4.18m x 3.36m	13'7" x 11'0"
Total area	52.0 sq.m.	560 sq.ft.

PLOTS 341, 346, 351 & 356 TYPE LW1\_04

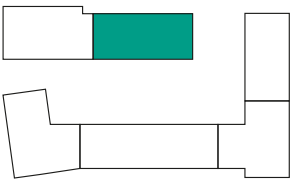
Kitchen	3.23m x 2.24m	10'6" x 7'3"
Living/Dining	5.19m x 3.57m	17'0" x 11'7"
Bedroom 1	4.02m x 3.36m	13'2" x 11'0"
Bedroom 2	3.50m x 3.36m	11'5" x 11'0"
Total area	73.4 sq.m.	790 sq.ft.

PLOTS 342, 347, 352 & 357 TYPE LW3\_05

Kitchen	3.30m x 3.37m	10'8" x 11'1"
Living/Dining	2.84m x 6.54m	9'3" x 21'4"
Bedroom 1	3.18m x 4.24m	10'4" x 13'9"
Bedroom 2	3.81m x 3.00m	12'5" x 9'8"
Bedroom 3	2.59m x 3.00m	8'5" x 9'8"
Total area	88.6 sq.m.	954 sq.ft.



Some items shown in this key may be subject to change, and positions could vary from those indicated on this floorplan. Please refer to Sales Advisor for details of your selected plot. External finishes, landscaping and configuration may vary from plot to plot. Please refer to Sales Advisor for further details. All dimensions are approximate and should not be used for carpet sizes, appliance spaces or furniture. Furniture not to scale and all positions are indicative. **Kitchen layouts are subject to change.** We operate a policy of continuous improvement and individual features such as kitchen and bathroom layouts, doors, windows, garages and elevational treatments may vary from time to time. Consequently these particulars should be treated as general guidance only and do not constitute a contract, part of a contract or a warranty.



- KEY**
- 1 Bedroom Apartment
  - 2 Bedroom Apartment
  - 2 Bedroom Apartment
  - W Fitted Wardrobe



**LEGACY  
WHARF**  
STRATFORD

WACKE  
APARTMENTS

Computer generated image of Wacke apartments





WACKE APARTMENTS

First Floor

PLOT 358 TYPE LW3\_08

Kitchen/Living/		
Dining	5.35m x 5.89m	17'7" x 19'3"
Bedroom 1	3.45m x 4.24m	11'3" x 13'9"
Bedroom 2	3.26m x 4.21m	10'8" x 13'8"
Bedroom 3	2.60m x 3.41m	8'5" x 11'2"
Total area	92.8 sq.m.	999 sq.ft.

PLOT 359 TYPE LW2\_29

Kitchen/Living/		
Dining	5.14m x 5.75m	16'9" x 18'9"
Bedroom 1	3.50m x 4.15m	11'5" x 13'6"
Bedroom 2	2.33m x 4.15m	7'7" x 13'6"
Total area	73.3 sq.m.	789 sq.ft.

PLOT 360 TYPE LW1\_19

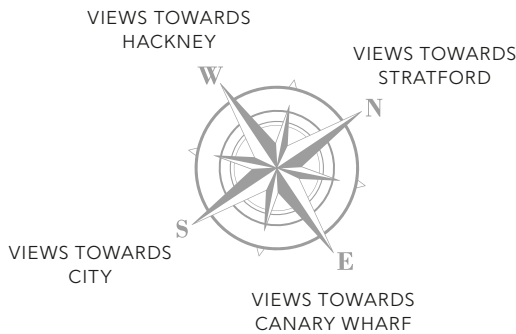
Kitchen/Living/		
Dining	3.98m x 5.96m	13'1" x 19'6"
Bedroom	3.51m x 3.60m	11'5" x 11'8"
Total area	51.2 sq.m.	551 sq.ft.

PLOT 361 TYPE LW2\_28

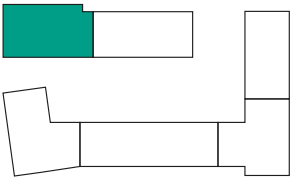
Kitchen/Living/		
Dining	8.05m x 3.57m	26'4" x 11'7"
Bedroom 1	2.95m x 4.29m	9'7" x 14'1"
Bedroom 2	4.02m x 2.75m	13'2" x 9'0"
Total area	71.1 sq.m.	765 sq.ft.

PLOT 362 TYPE LW1\_20

Kitchen/Living/		
Dining	4.42m x 5.13m	14'5" x 16'8"
Bedroom	2.92m x 5.14m	9'6" x 16'8"
Total area	52.3 sq.m.	563 sq.ft.



Some items shown in this key may be subject to change, and positions could vary from those indicated on this floorplan. Please refer to Sales Advisor for details of your selected plot. External finishes, landscaping and configuration may vary from plot to plot. Please refer to Sales Advisor for further details. All dimensions are approximate and should not be used for carpet sizes, appliance spaces or furniture. Furniture not to scale and all positions are indicative. **Kitchen layouts are subject to change.** We operate a policy of continuous improvement and individual features such as kitchen and bathroom layouts, doors, windows, garages and elevational treatments may vary from time to time. Consequently these particulars should be treated as general guidance only and do not constitute a contract, part of a contract or a warranty.



- KEY**
- 1 Bedroom Apartment
  - 2 Bedroom Apartment
  - 2 Bedroom Apartment
  - W Fitted Wardrobe



WACKE APARTMENTS

Second - Seventh Floors

PLOTS 363, 368, 373, 378, 383 & 388 TYPE LW3\_08

Kitchen/Living/		
Dining	5.35m x 5.89m	17'7" x 19'3"
Bedroom 1	3.45m x 4.24m	11'3" x 13'9"
Bedroom 2	3.26m x 4.21m	10'8" x 13'8"
Bedroom 3	2.60m x 3.41m	8'5" x 11'2"
Total area	92.8 sq.m.	999 sq.ft.

PLOTS 364, 369, 374, 379, 384 & 389 TYPE LW2\_29

Kitchen/Living/		
Dining	5.14m x 5.75m	16'9" x 18'9"
Bedroom 1	3.50m x 4.15m	11'5" x 13'6"
Bedroom 2	2.33m x 4.15m	7'7" x 13'6"
Total area	73.3 sq.m.	789 sq.ft.

PLOTS 365, 370, 375, 380, 385 & 390 TYPE LW1\_19

Kitchen/Living/		
Dining	3.98m x 5.96m	13'1" x 19'6"
Bedroom	3.51m x 3.60m	11'5" x 11'8"
Total area	51.2 sq.m.	551 sq.ft.

PLOTS 366, 371, 376, 381, 386 & 391 TYPE LW2\_28

Kitchen/Living/		
Dining	8.05m x 3.57m	26'4" x 11'7"
Bedroom 1	2.95m x 4.29m	9'7" x 14'1"
Bedroom 2	4.02m x 2.75m	13'2" x 9'0"
Total area	71.1 sq.m.	765 sq.ft.

PLOTS 367, 372, 377, 382, 387 & 392 TYPE LW1\_20

Kitchen/Living/		
Dining	4.42m x 5.13m	14'5" x 16'8"
Bedroom	2.92m x 5.14m	9'6" x 16'8"
Total area	52.3 sq.m.	563 sq.ft.

PLOTS 364, 369, 374, 379, 384 & 389  
TYPE LW2\_29

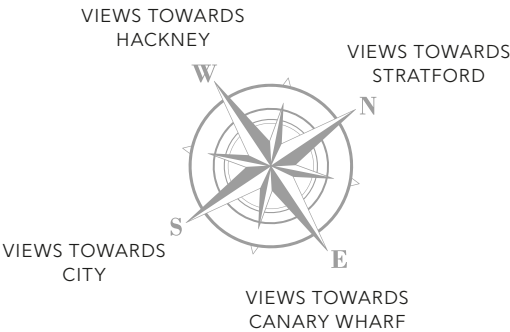
PLOTS 365, 370, 375, 380, 385 & 390  
TYPE LW1\_19

PLOTS 366, 371, 376, 381, 386 & 391  
TYPE LW2\_28

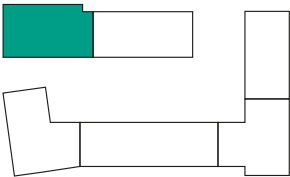


PLOTS 363, 368, 373, 378, 383 & 388  
TYPE LW3\_08

PLOTS 367, 372, 377, 382, 387 & 392  
TYPE LW1\_20



Some items shown in this key may be subject to change, and positions could vary from those indicated on this floorplan. Please refer to Sales Advisor for details of your selected plot. External finishes, landscaping and configuration may vary from plot to plot. Please refer to Sales Advisor for further details. All dimensions are approximate and should not be used for carpet sizes, appliance spaces or furniture. Furniture not to scale and all positions are indicative. **Kitchen layouts are subject to change.** We operate a policy of continuous improvement and individual features such as kitchen and bathroom layouts, doors, windows, garages and elevational treatments may vary from time to time. Consequently these particulars should be treated as general guidance only and do not constitute a contract, part of a contract or a warranty.



- KEY
- 1 Bedroom Apartment
  - 2 Bedroom Apartment
  - 2 Bedroom Apartment
  - W Fitted Wardrobe



# A REPUTATION BUILT ON SOLID FOUNDATIONS

BELLWAY LONDON HAS BEEN BUILDING EXCEPTIONAL QUALITY NEW HOMES THROUGHOUT THE UK FOR OVER 75 YEARS, CREATING OUTSTANDING PROPERTIES IN DESIRABLE LOCATIONS

Bellway London has earned a strong reputation for high standards of design, build quality and customer service. From the location of the site, to the design of the home, to the materials selected, we ensure that our impeccable attention to detail is at the forefront of our build process.

We create developments which foster strong communities and integrate seamlessly with the local area. Each year, Bellway London commits to supporting education initiatives, providing transport and highways improvements, healthcare facilities and preserving - as well as creating - open spaces for everyone to enjoy.

Our high standards are reflected in our dedication to customer service and we believe that the process of buying and owning a Bellway London home is a pleasurable and straightforward one. Having the knowledge, support and advice from a committed Bellway London team member will ensure your home-buying experience is seamless and rewarding, at every step of the way.

Bellway London abides by the New Homes Quality Code, an independent industry code established to champion quality new homes and deliver better outcomes for consumers.



## OUR PASSION FOR GREAT CUSTOMER CARE

FROM THE FIRST DAY YOU VISIT ONE OF OUR SALES CENTRES TO THE DAY YOU MOVE IN, WE AIM TO PROVIDE A LEVEL OF SERVICE AND AFTER-SALES CARE THAT IS SECOND TO NONE

Each home is quality checked by our site managers and sales advisors, after which we invite our customers to a pre-occupation visit. These personalised visits provide a valuable opportunity for homeowners to understand the various running aspects of their new home. On the move-in day our site and sales personnel will be there to ensure that the move-in is achieved as smoothly as possible.

Providing high levels of customer care and building quality homes is our main priority. However, we are aware that errors do sometimes occur and where this happens, it has always been our intention to minimise inconvenience and resolve any outstanding issues at the earliest opportunity. In managing

this process we have after sales support that is specifically tasked to respond to all customer enquiries. We have a 24 hour emergency helpline and provide a comprehensive information pack that details the working aspects of a new home. Our homes come with a 10-year NHBC Buildmark policy which includes deposit protection from exchange of contracts, a two-year builder warranty from legal completion, and then eight years of structural defects insurance cover.\*

We are confident that our approach to building and selling new homes coupled with our Customer Care programme will provide you with many years of enjoyment in your new home.

\*For more details, we advise you to visit the NHBC website at [www.nhbc.co.uk/homeowners](http://www.nhbc.co.uk/homeowners) and take a look at the 'Welcome to NHBC warranty and insurance' brochure.



**Bellway** | London

## OUR PORTFOLIO

BELLWAY LONDON HAS BEEN DELIVERING HOMES OF UNRIVALLED QUALITY IN LONDON FOR OVER 75 YEARS. WE HAVE BUILT COMMUNITIES, SHAPED SKYLINES AND CONTRIBUTED TO INFRASTRUCTURE UPGRADES TO HELP BUILD A GREATER LONDON



Photograph of Explorers Wharf, Limehouse.

## COMPLETED DEVELOPMENTS

### THE RESIDENCE

NINE ELMS



Photograph of The Residence.

- 1, 2 and 3 bedroom apartments & penthouses
- Podium gardens
- 24 hour concierge
- Private residents' gym
- Meeting suite
- Media room
- Secure car parking
- Opposite the new US Embassy
- Walking distance to new Nine Elms Zone 1 station
- Completed in 2020

### LEGACY WHARF (PHASE 1)

STRATFORD



Photograph of Legacy Wharf.

- 1, 2 and 3 bedroom apartments
- Concierge
- Fitness centre
- Communal gardens and play areas
- Part of the regeneration of Stratford
- Walking distance of Pudding Mill Lane DLR
- First phase completed in 2019

### EXPLORERS WHARF

LIMEHOUSE



Photograph of Explorer's Wharf.

- 1, 2 and 3 bedroom waterside apartments
- Residents' gym
- Concierge
- Landscaped podium and roof gardens
- Walking distance to Westferry DLR
- Completed in 2020

### DOCKSIDE

TURNBERRY QUAY



Photograph of Dockside.

- 1, 2 and 3 bedroom apartments with panoramic views of Canary Wharf
- Concierge
- Parking
- Commercial space
- Walking distance to Crossharbour DLR
- Completed in 2018





Beckton Parkside Show Apartment.

## DON'T JUST TAKE OUR WORD FOR IT

CHRISTINE RECENTLY FOUND HER NEW HOME AT BELLWAY LONDON'S NEARBY CROSSWAYS QUARTER DEVELOPMENT.



Christine, a 29-year-old legal project management analyst, has left home in South Norwood after purchasing an apartment at Bellway London's Crossways Quarter development in Greenhithe.

Christine decided in spring 2023 that the time was right for her to finally leave home and buy her own property, and she's loving her new-found independence.

"I had been saving seriously for a few years and worked out that I had enough money for a deposit, so I started to look for somewhere to buy," says Christine. "My number one priority was it had to be within an hour commute of central London, as that is where my office is.

"I knew a one-bedroom apartment best suited my budget but I wanted it to have allocated parking, not be on the ground floor and to have a balcony."

Christine started her search online, where she spotted details about Crossways Quarter. She says: "I called the site and spoke to Anca, the sales advisor, and made an appointment to go over and look at a two-bedroom show apartment. I went along and loved the look and feel of the apartment.

"Anca was really friendly and helpful. She told me that Bellway London would give me a contribution towards my deposit which was great news. I reserved the apartment with my 10% deposit but the additional £12,500 boost gave me more equity in the property and brought my monthly mortgage payments down."

LEGACY WHARF

★ ★ ★ ★ ★

AWARDED HIGHEST  
RATING BY HBF

9/10 WOULD RECOMMEND  
US TO A FRIEND

Bellway London has been awarded five-star status by the Home Builders Federation (HBF), confirming the developer's place among the country's elite house-builders. More than nine out of ten customers said they would recommend Bellway London to a friend.

The award is the highest accolade a new homes developer can receive. HBF ratings are based on feedback from customers in the weeks after they move into their new home. Only a small handful of housebuilders achieved five-star status this year.

Customer Satisfaction 2025



COOKS ROAD, STRATFORD E15 2PN



Bellway | London

Bellway Homes Limited (Thames Gateway Division), Bellway House,  
Anchor Boulevard, Crossways Business Park, Dartford, Kent DA2 6QH

Telephone: 0203 993 9965 | @bellwaylondon | bellwaylondon

Please note that while every effort has been taken to ensure the accuracy of the information provided within this brochure, particulars regarding local amenities and their proximity should be considered as general guidance only. Computer generated images are shown for illustrative purposes only. The identification of schools and other educational establishments is intended to demonstrate the relationship to the development only and does not represent a guarantee of eligibility or admission. Journey times are representative of journeys made by car unless stated otherwise and may vary according to travel conditions and time of day. Sources: Google, The AA, National Rail and Transport for London. The particulars in this brochure are for illustration only. We operate a policy of continuous improvement and individual features such as kitchen and bathroom layouts, doors, windows, garages and elevational treatments may vary from time to time. Consequently, these particulars should be treated as general guidance only and do not constitute a contract, part of a contract or a warranty. All maps are for illustrative purposes only and not to scale. 01494-66/09/25.



