



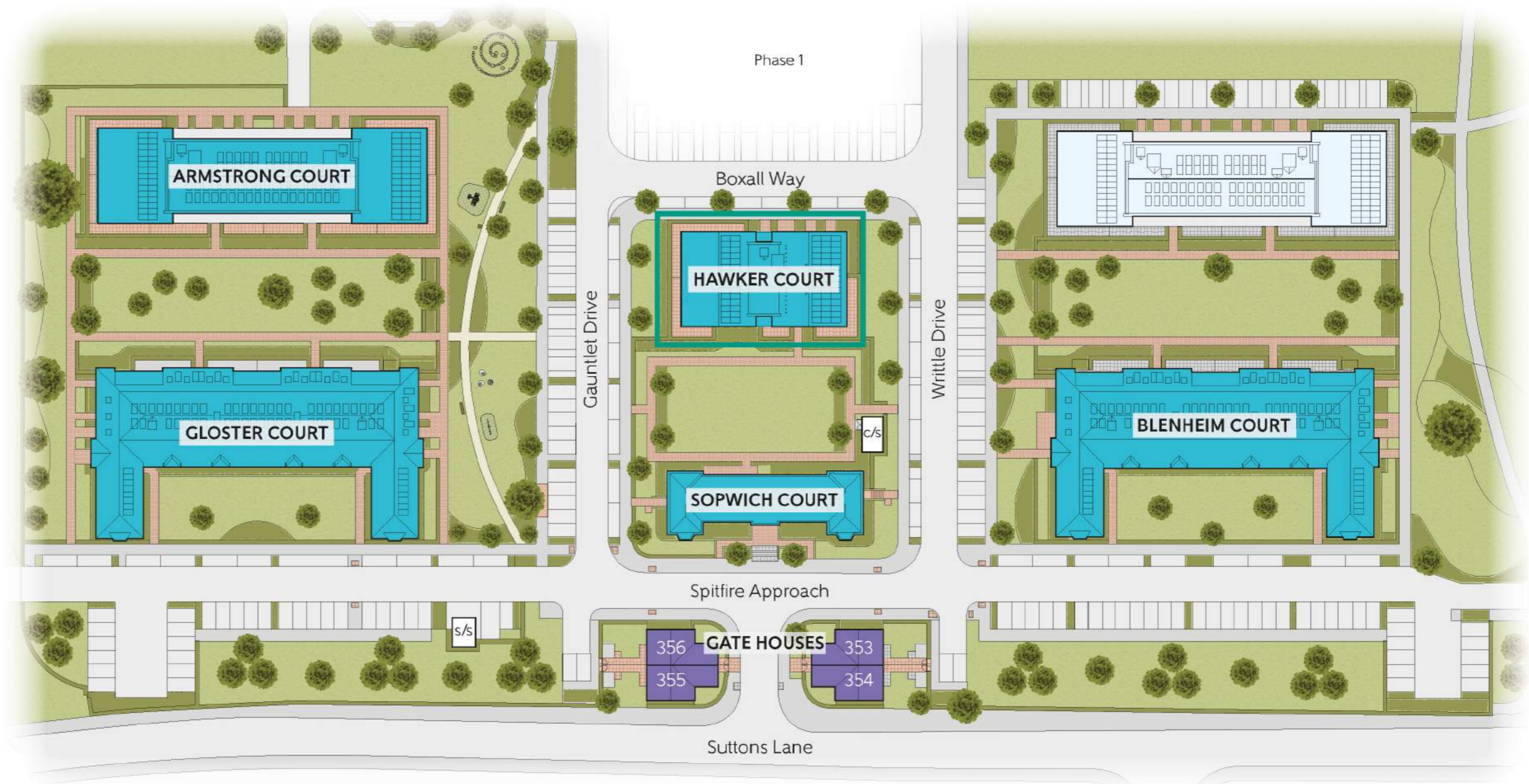
St George's Park

Hornchurch

GLOSTER COURT FLOOR PLANS

1 AND 2 BEDROOM APARTMENTS
PLOTS 287-316






St George's Park
 Hornchurch
DEVELOPMENT PLAN

DEVELOPMENT PLAN

- Blenheim Court: 1 & 2 Bedroom Apartments
plots 195-224
- Sopwich Court: 1 & 2 Bedroom Apartments (Refurbished)
plots 261-268
- Hawker Court: 1 & 2 Bedroom Apartments
plots 269-286
- Gloster Court: 1 & 2 Bedroom Apartments
plots 287-316
- Armstrong Court: 1 & 2 Bedroom Apartments
plots 317-352
- The Gatehouses: 3 Bedroom Homes
plots 353-356
- Affordable Homes

The site plan is drawn to show the relative position of individual properties. Not to scale. These are drawings and will not show land contours and gradients, boundary treatments, landscaping or local authority street lighting. Footpaths subject to change. For details of individual properties and availability please refer to our Sales Advisor. Hard and soft landscaping is indicative only.

GLOSTER COURT

GROUND FLOOR

PLOTS 287 & 292 THE ALLIUM

Kitchen/Living/ Dining Room	6.205m x 6.123m	20'4" x 20'1"
Bedroom 1	4.380m x 2.825m	14'4" x 9'3"
Bedroom 2	5.045m x 2.800m	16'7" x 9'2"
Total area	74.9 sq.m.	806 sq.ft.

PLOTS 288 & 291 THE CARNATION

Kitchen/Living/ Dining Room	5.000m x 4.710m	16'5" x 15'5"
Bedroom	4.095m x 3.345m	13'5" x 11'0"
Total area	50.2 sq.m.	540 sq.ft.

PLOTS 289 & 290 THE DAFFODIL

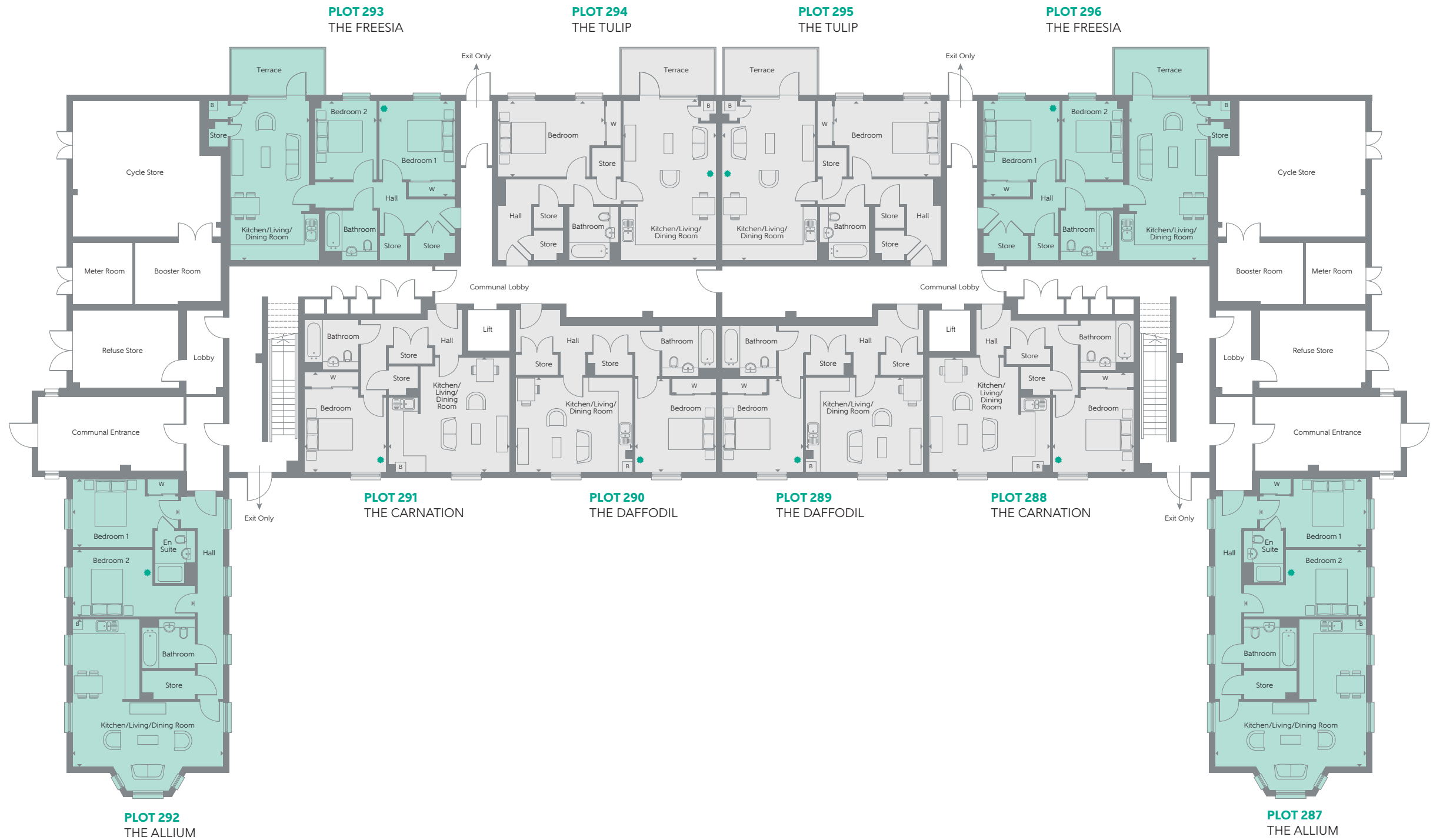
Kitchen/Living/ Dining Room	4.818m x 3.900m	15'10" x 12'10"
Bedroom	3.845m x 3.345m	12'7" x 11'0"
Total area	50.6 sq.m.	545 sq.ft.

PLOTS 293 & 296 THE FREESIA

Kitchen/Living/ Dining Room	6.528m x 3.270m	21'5" x 10'9"
Bedroom 1	3.933m x 3.150m	12'11" x 10'4"
Bedroom 2	3.238m x 2.535m	10'7" x 8'4"
Total area	63.1 sq.m.	679 sq.ft.

PLOTS 294 & 295 THE TULIP

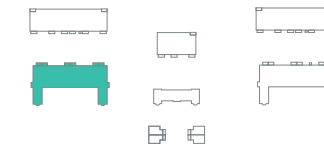
Kitchen/Living/ Dining Room	6.528m x 3.823m	21'5" x 12'7"
Bedroom	4.370m x 3.088m	14'4" x 10'2"
Total area	59.2 sq.m.	637 sq.ft.



Some items shown in this key may be subject to change, and positions could vary from those indicated on this floorplan. Please refer to Sales Advisor for details of your selected plot. External finishes, landscaping and configuration may vary from plot to plot. Please refer to Sales Advisor for further details. All dimensions are approximate and should not be used for carpet sizes, appliance spaces or furniture. Furniture not to scale and all positions are indicative. **Kitchen layouts are subject to change.** We operate a policy of continuous improvement and individual features such as kitchen and bathroom layouts, doors, windows, garages and elevational treatments may vary from time to time. Consequently these particulars should be treated as general guidance only and do not constitute a contract, part of a contract or a warranty.



Front Elevation



Ground Floor

KEY

- 1 Bedroom
- 2 Bedroom
- W Fitted Wardrobe
- B Boiler
- Indicates where dimensions are taken from
- Suggested working from home area with USB socket

GLOSTER COURT

FIRST FLOOR

PLOTS 297 & 302 THE ALLIUM

Kitchen/Living/ Dining Room	6.205m x 6.123m	20'4" x 20'1"
Bedroom 1	4.380m x 2.825m	14'4" x 9'3"
Bedroom 2	5.045m x 2.800m	16'7" x 9'2"
Total area	74.9 sq.m.	806 sq.ft.

PLOTS 298 & 301 THE CARNATION

Kitchen/Living/ Dining Room	5.000m x 4.710m	16'5" x 15'5"
Bedroom	4.095m x 3.345m	13'5" x 11'0"
Total area	50.2 sq.m.	540 sq.ft.

PLOTS 299 & 300 THE DAFFODIL

Kitchen/Living/ Dining Room	4.818m x 3.900m	15'10" x 12'10"
Bedroom	3.845m x 3.345m	12'7" x 11'0"
Total area	50.6 sq.m.	545 sq.ft.

PLOTS 303 & 310 THE HYACINTH

Kitchen/Living/ Dining Room	6.205m x 2.795m	20'4" x 9'2"
Bedroom	3.433m x 3.055m	11'3" x 10'0"
Total area	42.0 sq.m.	452 sq.ft.

PLOTS 304 & 309 THE IRIS

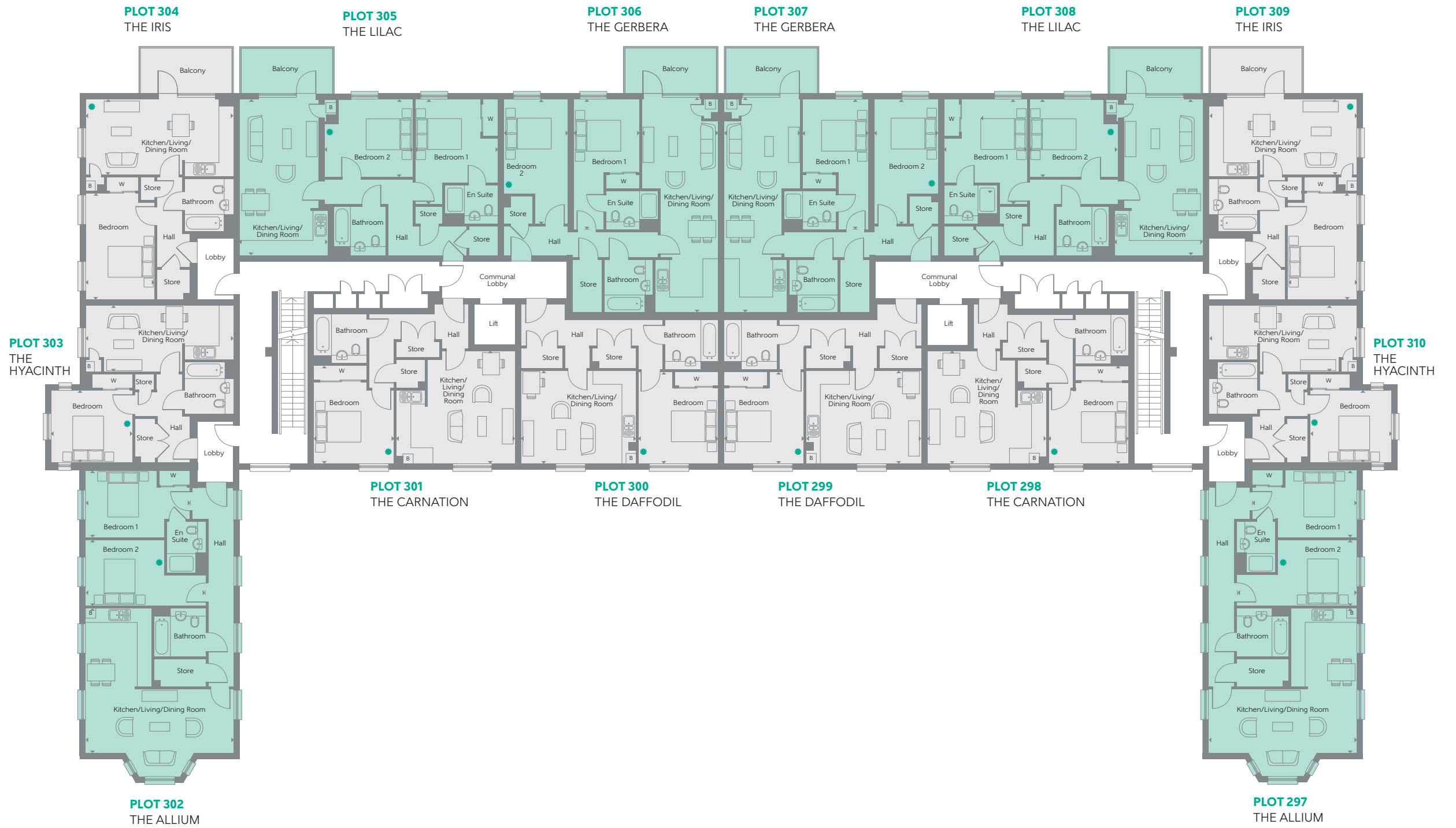
Kitchen/Living/ Dining Room	6.205m x 3.138m	20'4" x 10'4"
Bedroom	4.425m x 2.915m	14'6" x 9'7"
Total area	47.3 sq.m.	509 sq.ft.

PLOTS 305 & 308 THE LILAC

Kitchen/Living/ Dining Room	6.528m x 3.670m	21'5" x 12'0"
Bedroom 1	4.388m x 3.465m	14'5" x 11'4"
Bedroom 2	3.745m x 3.238m	12'3" x 10'7"
Total area	71.4 sq.m.	769 sq.ft.

PLOTS 306 & 307 THE GERBERA

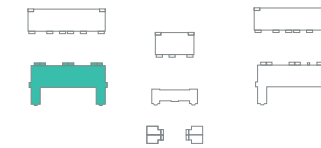
Kitchen/Living/ Dining Room	8.923m x 3.193m	29'3" x 10'6"
Bedroom 1	5.483m x 2.780m	18'0" x 9'1"
Bedroom 2	5.233m x 2.650m	17'2" x 8'8"
Total area	73.8 sq.m.	794 sq.ft.



Some items shown in this key may be subject to change, and positions could vary from those indicated on this floorplan. Please refer to Sales Advisor for details of your selected plot. External finishes, landscaping and configuration may vary from plot to plot. Please refer to Sales Advisor for further details. All dimensions are approximate and should not be used for carpet sizes, appliance spaces or furniture. Furniture not to scale and all positions are indicative. **Kitchen layouts are subject to change.** We operate a policy of continuous improvement and individual features such as kitchen and bathroom layouts, doors, windows, garages and elevational treatments may vary from time to time. Consequently these particulars should be treated as general guidance only and do not constitute a contract, part of a contract or a warranty.



Front Elevation



First Floor

KEY

- 1 Bedroom
- 2 Bedroom
- W Fitted Wardrobe
- B Boiler
- Indicates where dimensions are taken from
- Suggested working from home area with USB socket

GLOSTER COURT

SECOND FLOOR

PLOTS 311 & 316 THE BLUEBELL

Kitchen/Living/ Dining Room	5.755m x 4.883m	18'11" x 16'0"
Bedroom 1	3.635m x 3.075m	11'11" x 10'1"
Bedroom 2	3.485m x 2.565m	11'5" x 8'5"
Total area	73.8 sq.m.	794 sq.ft.

PLOTS 312 & 315 THE ROSE

Kitchen/Living/ Dining Room	6.528m x 3.670m	21'5" x 12'0"
Bedroom 1	3.988m x 3.615m	13'1" x 11'10"
Bedroom 2	3.595m x 2.787m	11'10" x 9'2"
Total area	64.5 sq.m.	694 sq.ft.

PLOTS 313 & 314 THE PRIMROSE

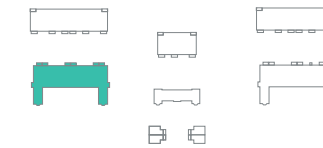
Kitchen/Living/ Dining Room	8.923m x 3.193m	29'3" x 10'6"
Bedroom 1	4.783m x 2.650m	15'8" x 8'8"
Bedroom 2	5.033m x 2.780m	16'6" x 9'1"
Total area	68.9 sq.m.	741 sq.ft.



Some items shown in this key may be subject to change, and positions could vary from those indicated on this floorplan. Please refer to Sales Advisor for details of your selected plot. External finishes, landscaping and configuration may vary from plot to plot. Please refer to Sales Advisor for further details. All dimensions are approximate and should not be used for carpet sizes, appliance spaces or furniture. Furniture not to scale and all positions are indicative. **Kitchen layouts are subject to change.** We operate a policy of continuous improvement and individual features such as kitchen and bathroom layouts, doors, windows, garages and elevational treatments may vary from time to time. Consequently these particulars should be treated as general guidance only and do not constitute a contract, part of a contract or a warranty.



Front Elevation



Second Floor

KEY

- 2 Bedroom
- Fitted Wardrobe
- Boiler
- Indicates where dimensions are taken from
- Suggested working from home area with USB socket



THE LIVING SPACE

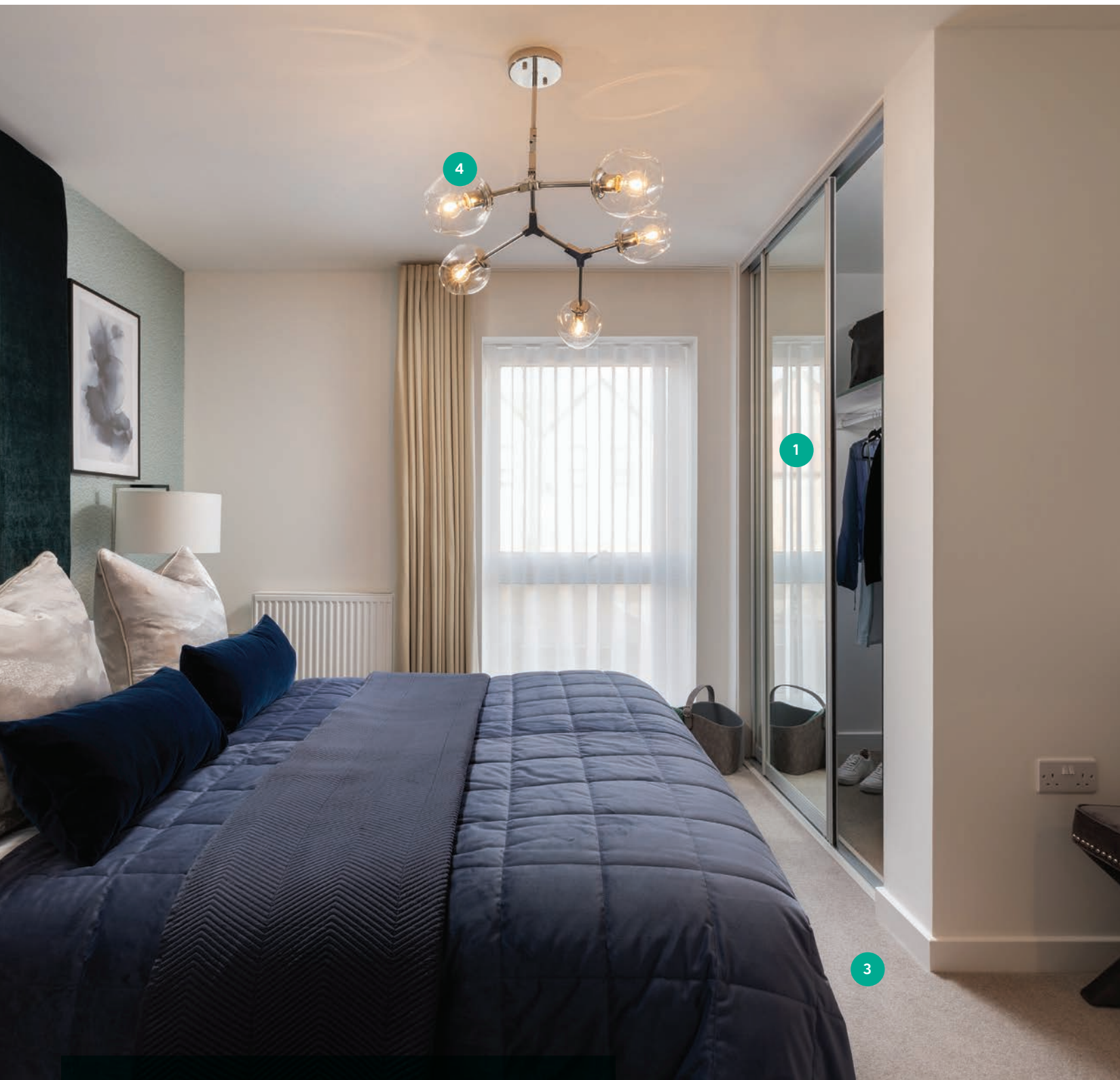
- 1 | Walls and ceilings finished in white
- 2 | Laminate wood flooring
- 3 | Pencil rounded skirting
- 4 | Media plate to living room with Sky Q/Sky+ HD (connection to Sky to be arranged by purchaser via satellite dish)
- 5 | Lower energy downlights to living area with dimmer switch
- 6 | Mains linked smoke detector
- 7 | uPVC French doors and windows
- 8 | Video door entry system



THE KITCHEN

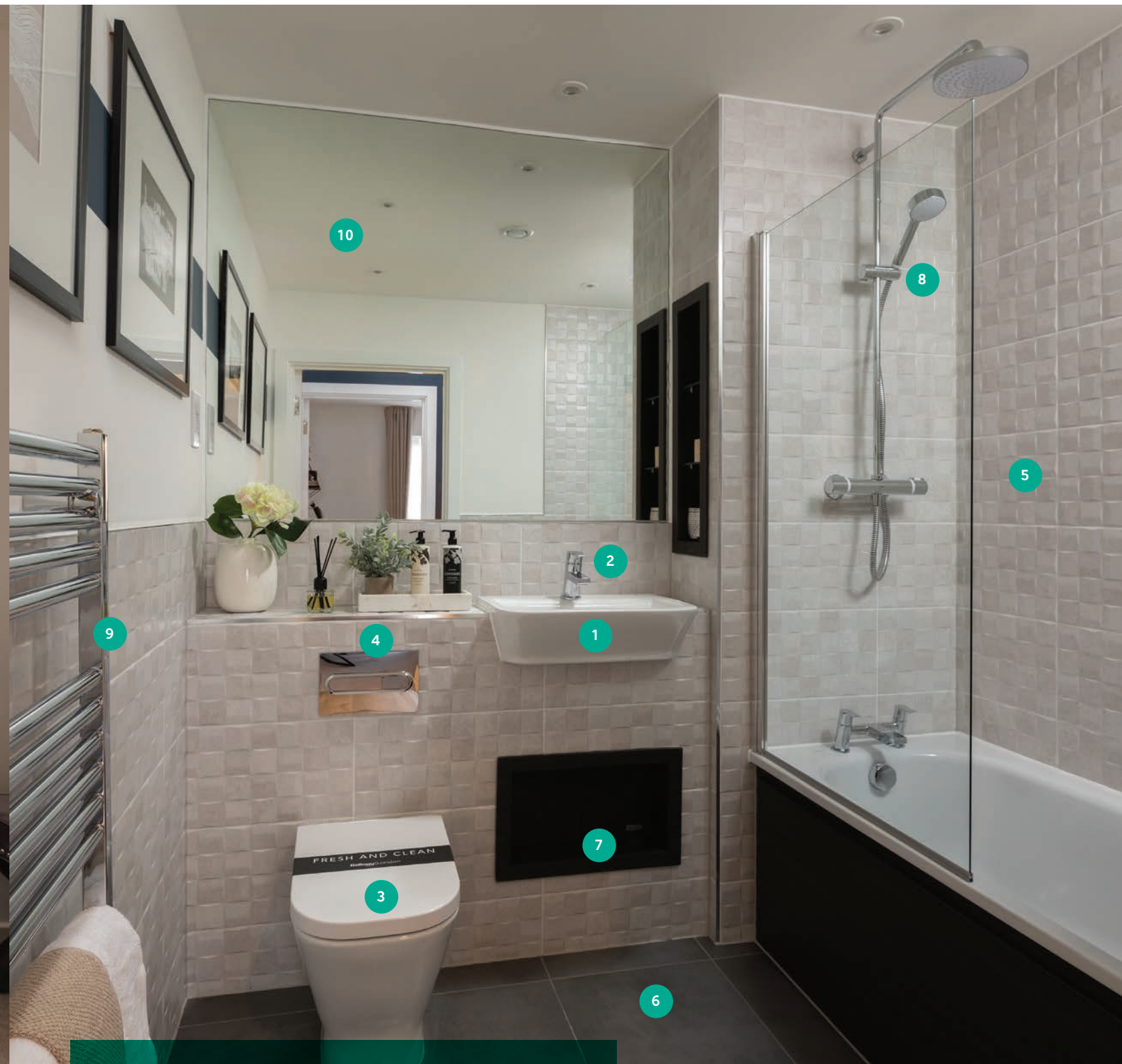
- 1 | Soft close doors and drawers
- 2 | Handle-less wall units
- 3 | Integrated oven (typically in tall housing unit where space permits)
- 4 | Glass splashback with ceramic hob and telescopic extractor hood
- 5 | Integrated fridge/freezer
- 6 | Removable cupboard with space for a dishwasher and microwave where possible
- 7 | Feature LED lighting
- 8 | Satin chrome sockets and switches

All appliances come complete with manufacturer warranties for your peace of mind.



THE BEDROOMS

- 1 | Fitted wardrobes to bedroom 1
- 2 | BT socket and TV/data point to bedroom 1
- 3 | Cormar Oaklands carpets to all bedrooms
- 4 | Energy efficient pendant lighting to all bedrooms



THE BATHROOM AND EN SUITE

- 1 | White Roca sanitaryware
- 2 | Chrome Bristan fittings
- 3 | Soft close WC with concealed cistern
- 4 | Dual chrome flush
- 5 | Fully ceramic tiled walls around bath/shower (half tiled to remaining walls)
- 6 | Ceramic tiles to floor
- 7 | Armarii slot-in shelving
- 8 | Mira thermostatic shower
- 9 | Heated chrome towel rail
- 10 | Mirror

